



Western Michigan University
ScholarWorks at WMU

Legacy Scout Tickets from Pure Oil Company

8-20-2021

MGRRE_PureOilScoutTickets_DAVIS ET AL_1_21051100330000

MGRRE

Western Michigan University

Follow this and additional works at: <https://scholarworks.wmich.edu/pure>



Part of the Geology Commons

WMU ScholarWorks Citation

MGRRE, "MGRRE_PureOilScoutTickets_DAVIS ET AL_1_21051100330000" (2021). *Legacy Scout Tickets from Pure Oil Company*. 2379.

<https://scholarworks.wmich.edu/pure/2379>

This Document is brought to you for free and open access via ScholarWorks at WMU. It has been accepted for inclusion in Legacy Scout Tickets from Pure Oil Company by an authorized administrator of ScholarWorks at WMU. See the National Digital Catalogue - Science Base Catalogue for more collections submitted by MGRRE.



MGRRE_PureOilScoutTickets_DAVIS ET AL_1_21051100330000

API 21051100330000

Permit Number 10033

Lease Name DAVIS ET AL

Well Number 1

County Gladwin

Township 17N

Range 2E

Section 17

2021 DEQ or Pure co_name MUSKEGON DEVELOPMENT CO

Pure Number 717

Latitude 43.8752254

Longitude -84.2478687

THE PURE OIL COMPANY

LOCATION REPORT

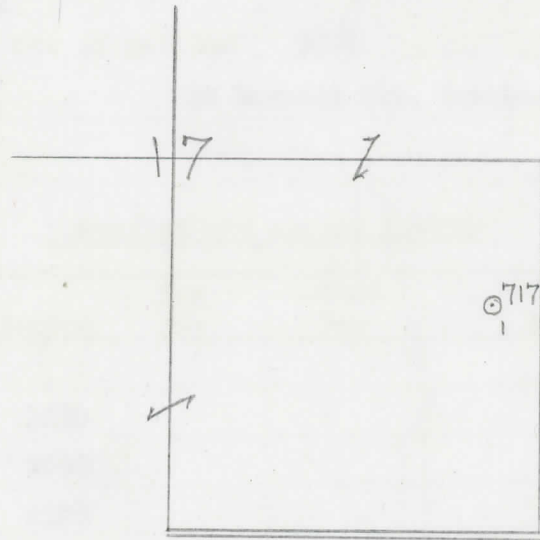
Date March 31, 1943 A.F.E. No. _____
 Division Michigan Producing District _____ Lease Davis, et al
 Acres _____ Lease No. _____ Elevation _____ Well No. 1 (Serial No. 717)
 Quadrangle SE-NE-SE Sec. 17 Twp. 17 N Rge. 2 E ~~XXXX~~ ~~XXXX~~ Bentley
 Survey _____ County Gladwin State Michigan
 Operator Mammoth Producing Corporation Map Bentley Twp - Gladwin Co.

_____	_____	Feet from North Line of Lease
<u>330</u>	<u>330</u>	" " East " " "
<u>330</u>	<u>330</u>	" " South " " "
_____	_____	" " West " " "
<u>990</u>	<u>990</u>	Feet from North Line of Section <u>1/4</u>
<u>330</u>	<u>330</u>	" " East " " "
_____	_____	" " South " " "
_____	_____	" " West " " "

Lo

LEGEND

- Location
- ☀ Gas Well
- Oil Well
- ☀ Gas - Distillate Well
- or ○ Dry Hole
- Dry Showing Oil
- ☀ Dry Showing Gas
- ⊗ Abandoned Location
- ☀ or ☀ Abandoned Gas Well
- or ● Abandoned Oil Well
- or ○ Input Well



Scale _____

Remarks: _____

Submitted by RN _____ Approved by _____
 Civil Engineer _____ Division Manager _____
 Approved by _____
 Vice-President - General Manager _____

COMPLETION RECORD OF WELLS DRILLED BY OTHER OPERATORS

Michigan Producing Division

Date: July 21, 1943 No. 717
 State: Mich. County: Gladwin ~~District~~ Twp.: Bentley Sec.: 17 Twp.: 17 N Rge.: 2 E
 Well No.: 1 (~~Serial No.~~) 717 Farm: Davis, et al Acres: _____
 Operator: Mammoth Producing Corporation Information secured from: Scouting Department
 Date well started: 6-14-43 Date well completed: 7-9-43 Elevation: 741.6

PRODUCTION RECORD

1st ² ~~24~~ hours natural: Filled up 165 ft.
 2nd 24 hours natural: _____
 Date of shot: 7-11-43 and No. of quarts: _____ From _____ to _____
 Date of acid: 7-12-43 No. of gallons: 3000
 1st 24 hours after acid ~~shot~~: 20 Barrels Net. (swabbed and flowed.)
 2nd 24 hours after acid: _____

FORMATION AND CASING RECORD

Formation	Top	Bottom	Top Pay	Bottom Pay	Remarks	Casing	
						Size	Set at
Marshall	880					10"	228
Red Rock	1010	1030				6-5/8"	1100
Sunbury	2070	2090				5-3/16"	3477
Berea	2090	2180					
Antrim	2230						
Traverse Lime	2663						
Dundee	3456	SLM.			Show oil 3523. Show oil and gas 3532 to 3540.		
Total Depth		3560					

Remarks: 3423' CTM equals 3449' SLM.

Signed: D. C. Shackelford