



Western Michigan University
ScholarWorks at WMU

Legacy Scout Tickets from Pure Oil Company

8-20-2021

**MGRRE_PureOilScoutTickets_DAVIS, MILTON B ET
AL_3_21051101650000**

MGRRE
Western Michigan University

Follow this and additional works at: <https://scholarworks.wmich.edu/pure>



Part of the Geology Commons

WMU ScholarWorks Citation

MGRRE, "MGRRE_PureOilScoutTickets_DAVIS, MILTON B ET AL_3_21051101650000" (2021). *Legacy Scout Tickets from Pure Oil Company*. 2383.
<https://scholarworks.wmich.edu/pure/2383>

This Document is brought to you for free and open access via ScholarWorks at WMU. It has been accepted for inclusion in Legacy Scout Tickets from Pure Oil Company by an authorized administrator of ScholarWorks at WMU. See the National Digital Catalogue - Science Base Catalogue for more collections submitted by MGRRE.



MGRRE_PureOilScoutTickets_DAVIS, MILTON B ET AL_3_21051101650000

API 21051101650000

Permit Number 10165

Lease Name DAVIS, MILTON B ET AL

Well Number 3

County Gladwin

Township 17N

Range 2E

Section 11

2021 DEQ or Pure co_name SUMMIT PETROLEUM CORP

Pure Number 721

Latitude 43.8717305

Longitude -84.2578756

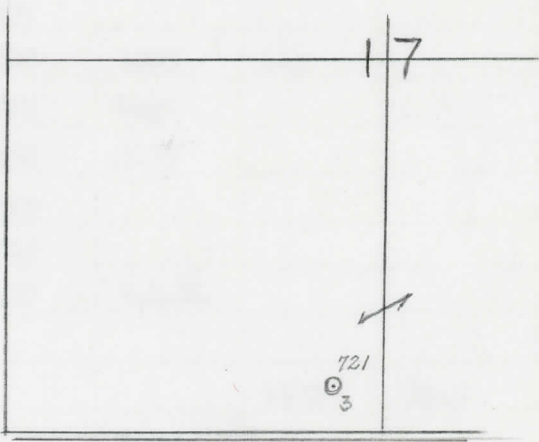
THE PURE OIL COMPANY LOCATION REPORT

Date June 23, 1943 A.F.E. No. _____
 Division Mich. Producing District _____ Lease Milton B. Davis et al
Milton B. Davis, et al
 Acres _____ Lease No. _____ Elevation _____ Well No. 3 (Serial No. 721)
 Quadrangle SE SE SW Sec. 17 Twp. 17 N Rge. 2 E ~~ENE~~ ~~ENE~~ Bentley
 Survey _____ County Gladwin State Michigan
 Operator Sun Oil Co. Map Bentley Twp - Gladwin Co.
Sun Oil Company Bentley Township, Gladwin County

Feet from North Line of Lease
 " " East " " "
330 330 " " South " " "
2310 2310 " " West " " "
 Feet from North Line of Section
330 330 " " East " 1/4 "
330 330 " " South " " "
 " " West " " "

LEGEND

- Location
- ☀ Gas Well
- Oil Well
- ☀ Gas - Distillate Well
- ⊘ or ○ Dry Hole
- Dry Showing Oil
- ☀ Dry Showing Gas
- ⊘ Abandoned Location
- ☀ or ☀ Abandoned Gas Well
- or ● Abandoned Oil Well
- ⊘ or ⊘ Input Well



Scale _____

Remarks: _____

Submitted by _____ Civil Engineer Approved by _____ Division Manager
 Approved by _____ Vice-President - General Manager

LOCATION REPORT

WELL NO.

COMPLETION RECORD OF WELLS DRILLED BY OTHER OPERATORS

Michigan Producing Division

721

Date August 25, 1943 No. 721
 State Mich. County Gladwin ~~Dist.~~ Bentley Twp. Bentley Sec. 17 Twp. 17 N Rge. 2 E
 Well No. 3 (County No.) 721 Farm Davis, et al Acres _____
 Operator Sun Oil Company Information secured ~~from~~ Scouting Department
 Date well started 6-24-43 Date well completed 8-11-43 Elevation 743.3

PRODUCTION RECORD

1st 24 hours natural 8 Barrels (Swabbed)
 2nd 24 hours natural _____
 Date of shot 8-13-43 and No. of quarts _____ From _____ to _____ From _____ to _____
 Date of acid 8-14-43 No. of gallons 4000
 1st 24 hours after acid 100 Barrels (Flowed)
 2nd 24 hours after acid _____

FORMATION AND CASING RECORD

Formation	Top	Bottom	Top Pay	Bottom Pay	Remarks	Casing	
						Size	Set at
Marshall	875					10"	217
Red Rock	1005	1035	Log			8-1/4"	748
Sunbury	2090	Log				6-5/8"	1130
Berea	2130	2177			Small show oil at 2170.	5-3/16"	3446
Antrim	2225						
Traverse Lime	2702						
Dundee	3437	S.L.M.			Small show oil at 3519.		
			3535	3545			
Total Depth		3600					

Remarks 3452' CTM equals 3458' SLM.

Signed D. C. Shackelford