



Western Michigan University  
ScholarWorks at WMU

---

Legacy Scout Tickets from Pure Oil Company

---

8-20-2021

**MGRRE\_PureOilScoutTickets\_FETTIG, E. J. & TUROW, B.  
L.\_1\_21051102950000**

MGRRE  
*Western Michigan University*

Follow this and additional works at: <https://scholarworks.wmich.edu/pure>



Part of the Geology Commons

---

#### **WMU ScholarWorks Citation**

MGRRE, "MGRRE\_PureOilScoutTickets\_FETTIG, E. J. & TUROW, B. L.\_1\_21051102950000" (2021). *Legacy Scout Tickets from Pure Oil Company*. 2386.  
<https://scholarworks.wmich.edu/pure/2386>

This Document is brought to you for free and open access via ScholarWorks at WMU. It has been accepted for inclusion in Legacy Scout Tickets from Pure Oil Company by an authorized administrator of ScholarWorks at WMU. See the National Digital Catalogue - Science Base Catalogue for more collections submitted by MGRRE.



---

**MGRRE\_PureOilScoutTickets\_FETTIG, E. J. & TUROW, B. L.\_1\_21051102950000**

API 21051102950000

Permit Number 10295

Lease Name FETTIG, E. J. & TUROW, B. L.

Well Number 1

County Gladwin

Township 20N

Range 1E

Section 10

2021 DEQ or Pure co\_name TEATER C W

Pure Number 724

Latitude 44.14288

Longitude -84.34724

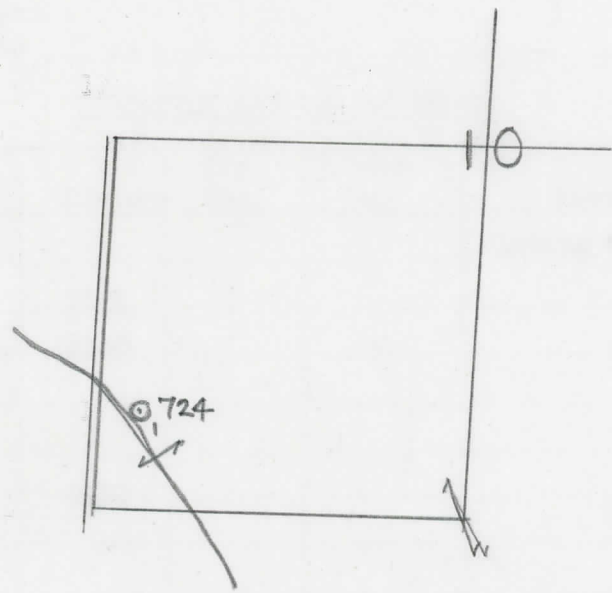
THE PURE OIL COMPANY  
LOCATION REPORT

Date August 18, 1943 A.F.E. No. \_\_\_\_\_  
 Division Mich. Producing District \_\_\_\_\_ Lease E. J. Fettig & B. L. Turow  
 Acres \_\_\_\_\_ Lease No. \_\_\_\_\_ Elevation \_\_\_\_\_ Well No. 1 (Serial No. 724)  
 Quadrangle C W $\frac{1}{2}$  SW SW Sec. 10 Twp. 20 N Rge. 1 E Twp. Clement  
 Survey \_\_\_\_\_ County Gladwin State Michigan  
 Operator Charles W. Teater Map Clement Twp - Gladwin Co  
660 660 330 330

\_\_\_\_\_ Feet from North Line of Lease  
 " " East " " "  
 " " South " " "  
330 330 " " West " " "  
 \_\_\_\_\_ Feet from North Line of Section  
 " " East " " "  
660 660 " " South " 1/4 "  
330 330 " " West " " "

LEGEND

- Location
- ☉ Gas Well
- Oil Well
- ☉ Gas - Distillate Well
- or ○ Dry Hole
- Dry Showing Oil
- ☉ Dry Showing Gas
- ⊖ Abandoned Location
- ☉ or ☉ Abandoned Gas Well
- or ● Abandoned Oil Well
- ⊖ or ⊖ Input Well



Remarks: \_\_\_\_\_  
 \_\_\_\_\_  
 \_\_\_\_\_

Scale \_\_\_\_\_

Submitted by RN Civil Engineer Approved by \_\_\_\_\_ Division Manager  
 Approved by \_\_\_\_\_ Vice-President - General Manager

THE LUKE OIL COMPANY

COMPLETION RECORD OF WELLS DRILLED BY OTHER OPERATORS

Michigan Producing Division

Date: September 22, 1943 No. 724  
 State: Mich. County: Gladwin Dist. Twp.: Clement Sec.: 10 Twp.: 20 N Rge.: 1 E  
 Well No.: 1 (Serial No.) 724 Farm: Fettig & Turow Acres: \_\_\_\_\_  
 Operator: Charles W. Teater By: Scouting Department  
 Date well started: 8-16-43 Date well completed: 9-15-43 Elevation: 831.3

PRODUCTION BOARD

1st 24 hours natural: Dry Hole  
 2nd 24 hours natural: \_\_\_\_\_  
 Date of shot: \_\_\_\_\_ No. of quarts: \_\_\_\_\_ From: \_\_\_\_\_ to: \_\_\_\_\_ From: \_\_\_\_\_ to: \_\_\_\_\_  
 Date of acid: \_\_\_\_\_ No. of gallons: \_\_\_\_\_  
 1st 24 hours after acid shot: \_\_\_\_\_  
 2nd 24 hours after acid shot: \_\_\_\_\_

FORMATION AND CASING RECORD

Formation	Top	Bottom	Top Pay	Bottom Pay	Remarks	Casing	
						Size	Set at
Marshall	949				Flowing water 395.	10"	327
Red Rock	1045	1121				8-1/4"	1143
Sunbury	2190	2222					
Berea	2243						
Antrim	2300						
Total Depth		2430					

Remarks: 2098' CTM equals 2094' SLM.

Signed: D. G. Shackelford