



Western Michigan University
ScholarWorks at WMU

Legacy Scout Tickets from Pure Oil Company

8-20-2021

**MGRRE_PureOilScoutTickets_STATE BEAVERTON
B_1_21051104090000**

MGRRE
Western Michigan University

Follow this and additional works at: <https://scholarworks.wmich.edu/pure>



Part of the Geology Commons

WMU ScholarWorks Citation

MGRRE, "MGRRE_PureOilScoutTickets_STATE BEAVERTON B_1_21051104090000" (2021). *Legacy Scout Tickets from Pure Oil Company*. 2387.
<https://scholarworks.wmich.edu/pure/2387>

This Document is brought to you for free and open access via ScholarWorks at WMU. It has been accepted for inclusion in Legacy Scout Tickets from Pure Oil Company by an authorized administrator of ScholarWorks at WMU. See the National Digital Catalogue - Science Base Catalogue for more collections submitted by MGRRE.



MGRRE_PureOilScoutTickets_STATE BEAVERTON B_1_21051104090000

API 21051104090000

Permit Number 10409

Lease Name STATE BEAVERTON B

Well Number 1

County Gladwin

Township 17N

Range 2W

Section 30

2021 DEQ or Pure co_name ORYX ENERGY CO

Pure Number 725

Latitude 43.84223

Longitude -84.59746

THE PURE OIL COMPANY

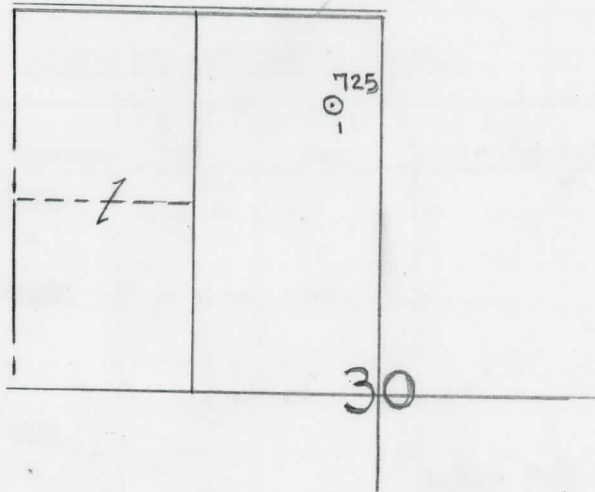
LOCATION REPORT

Date October 6, 1943 A.F.E. No. _____
 Division Michigan Producing District _____ Lease State-Beaverton - B
State-Beaverton
 Acres _____ Lease No. _____ Elevation _____ Well No. B-1 (Serial No. 725)
 Quadrangle C E 1/2 NE NW Sec. 30 Twp. 17 N Rge. 2 W ~~Beaverton~~ Beaverton
 Survey _____ County Gladwin State Michigan
 Operator Sun Oil Co Map Beaverton Twp - Gladwin Co
Sun Oil Company Beaverton Township, Gladwin County

660 660 Feet from North Line of Lease
330 330 " " East " " "
 " " South " " "
 " " West " " "
660 660 Feet from North Line of Section 1/4
330 330 " " East " " "
 " " South " " "
 " " West " " "

LEGEND

- Location
- ☀ Gas Well
- Oil Well
- ☀ Gas - Distillate Well
- or ○ Dry Hole
- Dry Showing Oil
- ☀ Dry Showing Gas
- ⊗ Abandoned Location
- ☀ or ☀ Abandoned Gas Well
- or ● Abandoned Oil Well
- or ○ Input Well



Remarks: _____

Scale _____

Submitted by RN Civil Engineer Approved by _____ Division Manager
 Approved by _____ Vice-President - General Manager

COMPLETION RECORD OF WELLS DRILLED BY OTHER OPERATORS

Michigan Producing Division

Date January 5, 1944 No. 725
 State Mich. County Gladwin Dist. Beaverton Sec. 30 Twp. 17 N Rge. 2 W
 Well No. B-1 (Serial No.) 725 Farm State-Beaverton Acres _____
 Operator Sun Oil Company Information secured from Scouting Department
 Date well started 11-1-43 Date well completed 12-30-43 Elevation 752.7

PRODUCTION BOARD

1st 24 hours natural Dry Hole
 2nd 24 hours natural _____
 Date of shot _____ No. of quarts _____ From _____ to _____ From _____ to _____
 Date of acid _____ No. of gallons _____
 1st 24 hours after acid shot _____
 2nd 24 hours after acid shot _____

FORMATION AND CASING RECORD

Formation	Top	Bottom	Top Pay	Bottom Pay	Remarks	Casing	
						Size	Set at
Brown Dolomite	1186	DSM.				13"	58
Mich. Stray	1320	"				6-5/8"	1610
Sunbury	2579	SLM.				5-3/16"	3870
Berea	2620	"					
Antrim	2648						
Traverse Lime	3168	SLM.					
Dundee	3865	"			Water (700 ft.) from 4057 to 4067.		
Total Depth		4067					

Remarks 2476' equals 2476' SLM; 3269' CTM equals 3272' SLM; 3870' CTM equals 3871' SLM.

Signed D. C. Shackelford