



Western Michigan University
ScholarWorks at WMU

Legacy Scout Tickets from Pure Oil Company

8-20-2021

**MGRRE_PureOilScoutTickets_CALCINS, HAROLD
L_1_21051104130000**

MGRRE
Western Michigan University

Follow this and additional works at: <https://scholarworks.wmich.edu/pure>



Part of the Geology Commons

WMU ScholarWorks Citation

MGRRE, "MGRRE_PureOilScoutTickets_CALCINS, HAROLD L_1_21051104130000" (2021). *Legacy Scout Tickets from Pure Oil Company*. 2388.
<https://scholarworks.wmich.edu/pure/2388>

This Document is brought to you for free and open access via ScholarWorks at WMU. It has been accepted for inclusion in Legacy Scout Tickets from Pure Oil Company by an authorized administrator of ScholarWorks at WMU. See the National Digital Catalogue - Science Base Catalogue for more collections submitted by MGRRE.



MGRRE_PureOilScoutTickets_CALCINS, HAROLD L_1_21051104130000

API 21051104130000

Permit Number 10413

Lease Name CALCINS, HAROLD L

Well Number 1

County Gladwin

Township 18N

Range 1E

Section 35

2021 DEQ or Pure co_name BASIN OIL CO

Pure Number 726

Latitude 43.92155

Longitude -84.31965

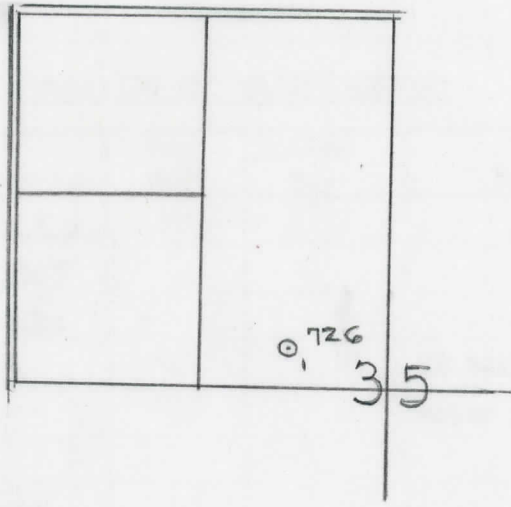
THE PURE OIL COMPANY LOCATION REPORT

Date October 6, 1943 A.F.E. No. _____
 Division Mich. Producing District _____ Lease Harold L. Calkins
 Acres _____ Lease No. _____ Elevation _____ Well No. 1 (Serial No. 726)
 Quadrangle S 1/2 SE NW Sec. 35 Twp. 18 N Rge. 1 E ~~EDX~~ ~~Dist~~ Twp. Hay
 Survey _____ County Gladwin State Michigan
 Operator Basin Oil Co. Map Hay Township, Gladwin Co.

_____		Feet from North Line of Lease	
_____	_____	" "	East " " "
<u>270</u>	<u>270</u>	" "	South " " "
<u>620</u>	<u>620</u>	" "	West " " "
_____		Feet from North Line of Section	
_____	_____	" "	East " <u>1/4</u> "
<u>700</u>	<u>700</u>	" "	South " " "
<u>270</u>	<u>270</u>	" "	West " " "

LEGEND

○ Location	☀ Gas Well	☀ Dry Showing Gas
● Oil Well	☀ Gas - Distillate Well	⊗ Abandoned Location
⊗ or ○ Dry Hole	☀ or ☀ Abandoned Gas Well	● or ● Abandoned Oil Well
● Dry Showing Oil	● or ○ Input Well	



Remarks: _____ Scale _____

Submitted by RN Civil Engineer Approved by _____ Division Manager
 Approved by _____ Vice-President - General Manager

THE PURE OIL COMPANY

The Pure Oil Company

COMPLETION RECORD OF WELLS DRILLED BY OTHER OPERATORS

Michigan Producing Division

Date November 17, 1943 No. 726
 State Mich. County Gladwin Twp. Hay Sec. 35 Twp. 18 N Rge. 1 E
 (Serial No.)
 Well No. 1 (county no.) 726 Farm Harold L. Calkins Acres
 Operator Basin Oil Company Information secured By Scouting Department
 Date well started 10-2-43 Date well completed 11-14-43 Elevation 716.2

PRODUCTION BOARD

1st 24 hours natural Dry Hole
 2nd 24 hours natural
 Date of shot No. of quarts From to From to
 Date of acid No. of gallons
 shot
 1st 24 hours after acid shot
 2nd 24 hours after acid shot

FORMATION AND CASING RECORD

Formation	Top	Bottom	Top Pay	Bottom Pay	Remarks	Casing	
						Size	Set at
Marshall	957	S.L.M.				10"	220
Red Rock	1067	1107				6-5/8"	1159
Sunbury	2130	2160				5-3/16"	3499
Berea	2160				22 bailers salt water in 24 hrs.		
Antrim	2255						
Traverse Form.	2721	SLM.					
Traverse Lime	2734	"					
Dundee	3489	"			Hole full water from 3594-3600.		
Total Depth		3600					

Remarks 965' CTM equals 965' SLM; 2728' CTM equals 2734' SLM.

Signed D. C. Shackelford