



Western Michigan University
ScholarWorks at WMU

Legacy Scout Tickets from Pure Oil Company

8-20-2021

**MGRRE_PureOilScoutTickets_SUMNER, CHARLES
H._1_21051108480000**

MGRRE
Western Michigan University

Follow this and additional works at: <https://scholarworks.wmich.edu/pure>



Part of the Geology Commons

WMU ScholarWorks Citation

MGRRE, "MGRRE_PureOilScoutTickets_SUMNER, CHARLES H._1_21051108480000" (2021). *Legacy Scout Tickets from Pure Oil Company*. 2392.
<https://scholarworks.wmich.edu/pure/2392>

This Document is brought to you for free and open access via ScholarWorks at WMU. It has been accepted for inclusion in Legacy Scout Tickets from Pure Oil Company by an authorized administrator of ScholarWorks at WMU. See the National Digital Catalogue - Science Base Catalogue for more collections submitted by MGRRE.



MGRRE_PureOilScoutTickets_SUMNER, CHARLES H._1_21051108480000

API 21051108480000

Permit Number 10848

Lease Name SUMNER, CHARLES H.

Well Number 1

County Gladwin

Township 20N

Range 1E

Section 25

2021 DEQ or Pure co_name WICKLUND J V DEVELOPMENT CO

Pure Number 732

Latitude 44.10095

Longitude -84.30226

THE PURE OIL COMPANY

LOCATION REPORT

Date June 15, 1944 A.F.E. No. _____

Division Mich. Producing District _____ Lease Charles H. Sumner

Acres _____ Lease No. _____ Elevation _____ Well No. 1 (Serial No. 732)

Quadrangle NW-SE-SW Sec. 25 Twp. 20 N Rge. 1 E Twp. Clement

Survey _____ County Gladwin State Michigan

Operator J. V. Wicklund Development Company Map Clement Twp - Gladwin Co.

330 330 Feet from North Line of Lease

990 990 " " East " " "

" " South " " "

" " West " " "

Feet from North Line of Section

990 990 " " East " 1/4 "

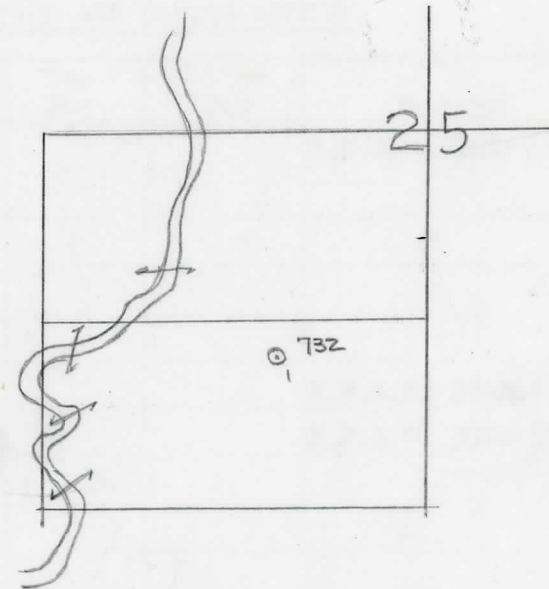
990 990 " " South " " "

" " West " " "

LEGEND

- Location
- ☀ Gas Well
- Oil Well
- ☀ Gas - Distillate Well
- or ○ Dry Hole
- Dry Showing Oil
- ☀ Dry Showing Gas
- ⊗ Abandoned Location
- ☀ or ☀ Abandoned Gas Well
- or ● Abandoned Oil Well
- or ○ Input Well

low



Scale _____

Remarks: _____

Submitted by RN Civil Engineer

Approved by _____ Division Manager

Approved by _____ Vice-President - General Manager

Michigan Producing Division

Date August 30, 1944 No. 732
 State Mich. County Gladwin ~~Block~~ Twp. Clement Sec. 25 Twp. 20 N Rge. 1 E
 Well No. 1 (Serial No.) 732 Farm Chas. H. Sumner Acres _____
 Operator J. V. Wicklund Devl. Co. Information secured ~~from~~ Scouting Department By _____
 Date well started 7-7-44 Date well completed 8-25-44 Elevation 768.9

PRODUCTION BOARD

1st 24 hours natural Dry Hole
 2nd 24 hours natural _____
 Date of shot _____ No. of quarts _____ From _____ to _____ From _____ to _____
 Date of acid _____ No. of gallons _____
 1st 24 hours after acid shot _____
 2nd 24 hours after acid shot _____

FORMATION AND CASING RECORD

Formation	Top	Bottom	Top Pay	Bottom Pay	Remarks	Casing	
						Size	Set at
Marshall	788	(-19)			H.F.S.W. 825-(-56)	10"	227
Red Rock	890	(-12) 950				8-1/4"	620
Sunbury	2015	(-24) 2030				6-5/8"	1036
Berea	2030	(-126) 1				5-3/16"	3368
Antrim	2085	(-1316)					
Traverse Lime	2571	(-1802)			H.F.S.W. 2690. (-142)		
Dundee	3367	(-2598)			H.F.S.W. 3500-3531.		
Total Depth		3531	(-2762)		(-2731)		

Remarks Hole full water at 415. (-354)
3206' equals 3202' SLM.

Signed D. C. Shackelford