



Legacy Scout Tickets from Pure Oil Company

8-20-2021

**MGRRE_PureOilScoutTickets_BOMAN, FRED H. &
MARGUERITE_1_21051109730000**

MGRRE

Western Michigan University

Follow this and additional works at: <https://scholarworks.wmich.edu/pure>



Part of the Geology Commons

WMU ScholarWorks Citation

MGRRE, "MGRRE_PureOilScoutTickets_BOMAN, FRED H. & MARGUERITE_1_21051109730000" (2021).
Legacy Scout Tickets from Pure Oil Company. 2394.
<https://scholarworks.wmich.edu/pure/2394>

This Document is brought to you for free and open access via ScholarWorks at WMU. It has been accepted for inclusion in Legacy Scout Tickets from Pure Oil Company by an authorized administrator of ScholarWorks at WMU. See the National Digital Catalogue - Science Base Catalogue for more collections submitted by MGRRE.



**MGRRE_PureOilScoutTickets_BOMAN, FRED H. &
MARGUERITE_1_21051109730000**

API 21051109730000

Permit Number 10973

Lease Name BOMAN, FRED H. & MARGUERITE

Well Number 1

County Gladwin

Township 19N

Range 1E

Section 15

2021 DEQ or Pure co_name MCCLANAHAN W L

Pure Number 734

Latitude 44.04647

Longitude -84.33521

THE PURE OIL COMPANY LOCATION REPORT

Date August 16, 1944

A.F.E. No. Fred H. & Marguerite Boman

Division Mich. Producing District _____

Lease Fred H. & Marguerite Boman

Acres _____ Lease No. _____ Elevation _____ Well No. 1 (Serial No. 734)

Quadrangle N $\frac{1}{2}$ -NW-SE Sec. 15 Twp. 19 N Rge. 1 E ~~Sec~~ Secord Twp. Secord

Survey _____ County Gladwin State Michigan

Operator W. L. McClanahan Map Secord town - Gladwin Co.

330 330 Feet from North Line of Lease

“ “ East “ “ “

“ “ South “ “ “

660 660 “ “ West “ 1/4 “

330 330 Feet from North Line of Section

“ “ East “ “ “

“ “ South “ “ “

660 660 “ “ West “ “ “

Low

LEGEND

○ Location

☀ Gas Well

☀ Dry Showing Gas

● Oil Well

⊗ Abandoned Location

☀ Gas - Distillate Well

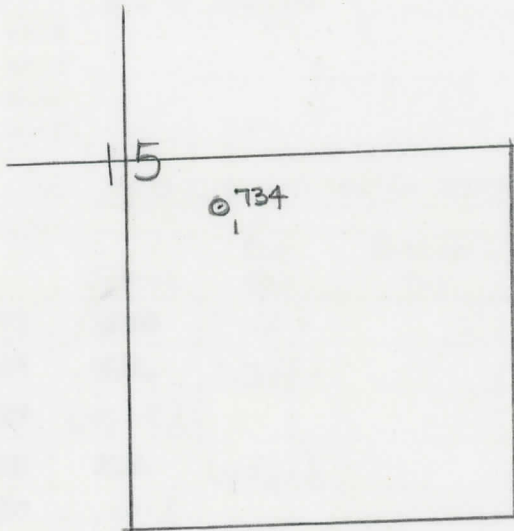
☀ or ☀ Abandoned Gas Well

∅ or ○ Dry Hole

● or ● Abandoned Oil Well

● Dry Showing Oil

● or ○ Input Well



Scale _____

Remarks: _____

Submitted by RN
Civil Engineer

Approved by _____
Division Manager

Approved by _____
Vice-President - General Manager

The Pure Oil Company
COMPLETION RECORD OF WELLS DRILLED BY OTHER OPERATORS

Michigan Producing Division

Date November 8, 1944 No. 734
 State Mich. County Gladwin ~~Dist.~~ Twp. Secord Sec. 15 Twp. 19 N Rge. 1 E
 Well No. 1 (Serial No.) ~~(County No.)~~ 734 Farm F. H. & M. Boman Acres _____
 Operator W. L. McClanahan Information secured ~~from~~ ^{By} Scouting Department
 Date well started 9-26-44 Date well completed 11-4-44 Elevation 757.6

PRODUCTION BOARD

1st 24 hours natural Dry Hole
 2nd 24 hours natural _____
 Date of shot _____ No. of quarts _____ From _____ To _____ From _____ to _____
 Date of acid _____ No. of gallons _____
 1st 24 hours after acid shot _____
 2nd 24 hours after acid shot _____

FORMATION AND CASING RECORD

Formation	Top	Bottom	Top Pay	Bottom Pay	Remarks	Casing	
						Size	Set at
Marshall	877	1050	(-119)			10"	180
Sunbury	2065	CTM.	(-1307)			8-1/4"	1057
Berea	2087	(-1329)					
Antrim	2188	SLM.	(-1430)				
Traverse Form.	2630	(-1882)					
Traverse Lime	2644	(-1886)			Very small show oil 2644-2654. (-1886)		
Dundee	3435	SLM	(-2677)		Black salt water (400 ft.) 3528- (-1886)		
Total Depth		3541	(-2782)		3541.		

Remarks 2184' equals 2188' SLM.; 3348' equals 3369' SLM.

Signed D. C. Shackelford