



Western Michigan University
ScholarWorks at WMU

Legacy Scout Tickets from Pure Oil Company

8-20-2021

**MGRRE_PureOilScoutTickets_STATE
BOURRET_1_21051117050000**

MGRRE
Western Michigan University

Follow this and additional works at: <https://scholarworks.wmich.edu/pure>



Part of the Geology Commons

WMU ScholarWorks Citation

MGRRE, "MGRRE_PureOilScoutTickets_STATE BOURRET_1_21051117050000" (2021). *Legacy Scout Tickets from Pure Oil Company*. 2400.
<https://scholarworks.wmich.edu/pure/2400>

This Document is brought to you for free and open access via ScholarWorks at WMU. It has been accepted for inclusion in Legacy Scout Tickets from Pure Oil Company by an authorized administrator of ScholarWorks at WMU. See the National Digital Catalogue - Science Base Catalogue for more collections submitted by MGRRE.



MGRRE_PureOilScoutTickets_STATE BOURRET_1_21051117050000

API 21051117050000

Permit Number 11705

Lease Name STATE BOURRET

Well Number 1

County Gladwin

Township 20N

Range 2E

Section 36

2021 DEQ or Pure co_name BELL H E AND ATHA HUNTER

Pure Number 742

Latitude 44.08791

Longitude -84.17261

THE PURE OIL COMPANY

LOCATION REPORT

Date August 1, 1945 A.F.E. No. _____

Division Mich. Producing District _____ Lease State-Bourret

Acres _____ Lease No. _____ Elevation _____ Well No. 1 (Serial No. 742)

Quadrangle SE NW SE Sec. 36 Twp. 20 N Rge. 2 E ~~YBOK~~ ~~YBOK~~ Twp. Bourret

Survey _____ County Gladwin State Michigan

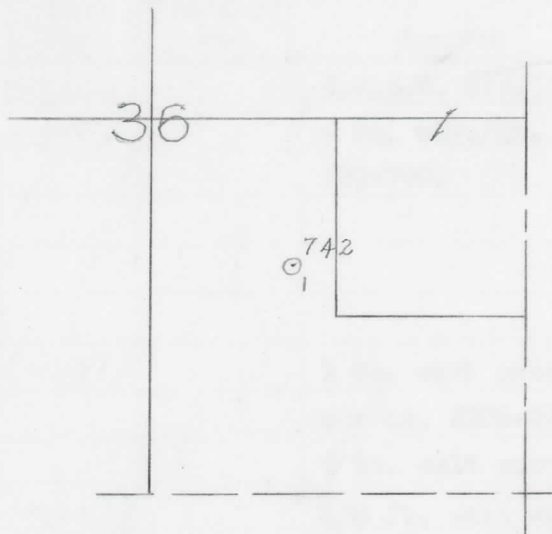
Operator H. E. Bell Map Bourret Township, Gladwin County

_____	Feet from North Line of Lease
<u>330</u>	" " East " " "
<u>330</u>	" " South " " "
_____	" " West " " "
<u>990</u>	Feet from North Line of Section <u>1/4</u>
_____	" " East " " "
_____	" " South " " "
<u>990</u>	" " West " " "

LEGEND

- Location
- ☀ Gas Well
- Oil Well
- ☀ Gas - Distillate Well
- ∅ or ○ Dry Hole
- or ○ Dry Showing Oil
- ☀ or ○ Dry Showing Gas
- ⊗ Abandoned Location
- ☀ or ⊗ Abandoned Gas Well
- or ● Abandoned Oil Well
- or ○ Input Well

N



Scale _____

Remarks: _____

Submitted by _____ Civil Engineer

Approved by _____ Division Manager

Approved by _____ Vice-President - General Manager

Vice-President - General Manager

Date September 26, 1945

LOCATION BELOW

SEE NO.

COMPLETION RECORD OF WELLS DRILLED BY OTHER OPERATORS

Michigan Producing Division

Date September 26, 1945 No. 742

State Mich. Co. Gladwin Dist. Bourret Twp. 20 N Rge. 2 E

Well No. 1 Serial No. 742 Farm State-Bourret Acres

Operator H. E. Bell

Date started 8-10-45 Date completed 9-18-45 Elevation 770.5

PRODUCTION RECORD

1st 24 hours natural

Date of shot No. of quarts From To From to

Date of acid shot No. of gallons

1st 24 hours after acid

Completed as: Oil Well Gas Well Dry Hole X

FORMATION AND CASING RECORD

Formation	Top	Bottom	Top Pay	Bottom Pay	Remarks	Casing	
						Size	Set at
Marshall	465	620	(+36)		H.F.S.W. 475. (+29)	10"	163
Coldw. Red Rock	1620	1630	(-84)		5 ba. wtr./hr. 780-790. (-9)	8-1/4"	680
Sunbury	1690	(919)				6-5/8"	2645
Berea	1715	(944)				5-3/16" RH	3025
Antrim	1821	(-1050)					
Traverse Lime	2208	SLM.	(-1437)		1 ba. salt water per hr. 2208-2215. (-1437)		
Dundee	3018	SLM.	(-2247)		5 ba. salt water per hr. 2395-2419. (-1624)		
Total Depth		3123	(-2352)		450 ft. salt water from 3109 to 3115. (-2338)		

Remarks 1215' eq. 1225' SLM; 2212' eq. 2212' SLM; 2787' eq. 2807' SLM; 3032' eq. 3025' SLM.

Signed D. C. Shackelford