



Western Michigan University
ScholarWorks at WMU

Legacy Scout Tickets from Pure Oil Company

8-20-2021

MGRRE_PureOilScoutTickets_LENTEN BROS_1_21051117520000

MGRRE

Western Michigan University

Follow this and additional works at: <https://scholarworks.wmich.edu/pure>



Part of the Geology Commons

WMU ScholarWorks Citation

MGRRE, "MGRRE_PureOilScoutTickets_LENTEN BROS_1_21051117520000" (2021). *Legacy Scout Tickets from Pure Oil Company*. 2401.

<https://scholarworks.wmich.edu/pure/2401>

This Document is brought to you for free and open access via ScholarWorks at WMU. It has been accepted for inclusion in Legacy Scout Tickets from Pure Oil Company by an authorized administrator of ScholarWorks at WMU. See the National Digital Catalogue - Science Base Catalogue for more collections submitted by MGRRE.



MGRRE_PureOilScoutTickets_LENTEN BROS_1_21051117520000

API 21051117520000

Permit Number 11752

Lease Name LENTEN BROS

Well Number 1

County Gladwin

Township 20N

Range 1W

Section 33

2021 DEQ or Pure co_name CALDWELL T F

Pure Number 744

Latitude 44.07431

Longitude -84.43882

THE PURE OIL COMPANY LOCATION REPORT

Date August 20, 1945

A.F.E. No. _____

Division Mich. Producing District _____

LENTEN BROS.
Lenten Bros.

Acres _____ Lease No. 11752 Elevation _____ Well No. 1 (Serial No. 744)

Quadrangle SE SE SW Sec. 33 Twp. 20 N Rge. 1 W ~~XBANK~~ ~~XDISEK~~ BUTMAN
Butman

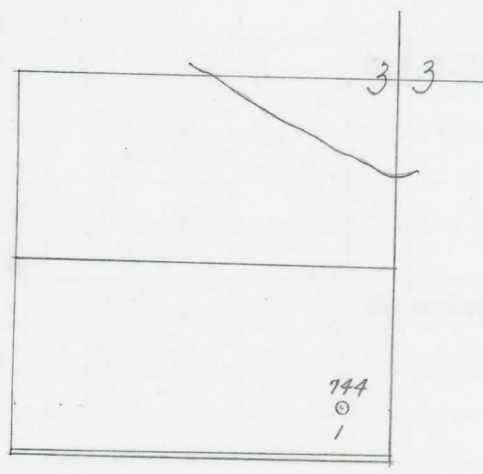
Survey _____ County Gladwin State Michigan

Operator T. F. Caldwell, Inc. Map Butman Township, Gladwin County

		Feet from North Line of Lease	
<u>330</u>	<u>330</u>	" "	East " " "
<u>330</u>	<u>330</u>	" "	South " " "
		" "	West " " "
		Feet from North Line of Section	
<u>330</u>	<u>330</u>	" "	East " " <u>1/4</u>
<u>330</u>	<u>330</u>	" "	South " " "
		" "	West " " "

LEGEND

- Location
- ☀ Gas Well
- Oil Well
- ☀ Gas - Distillate Well
- or ○ Dry Hole
- Dry Showing Oil
- ☀ Dry Showing Gas
- ⊗ Abandoned Location
- ☀ or ☀ Abandoned Gas Well
- or ● Abandoned Oil Well
- or ○ Input Well



Scale _____

Remarks: _____

Submitted by _____ Civil Engineer Approved by _____ Division Manager

Approved by _____ Vice-President - General Manager

THE PURE OIL COMPANY
The Pure Oil Company

COMPLETION RECORD OF WELLS DRILLED BY OTHER OPERATORS

WC

Michigan Producing Division

Date November 7, 1945 No. 744
 State Michigan Co. Gladwin Dist. Butman Twp. 33 Sec. 20 N Rge. 1 W
 Well No. 1 Serial No. 744 Farm Lenten Bros. Acres _____
 Operator T. F. Caldwell, Inc.
 Date started 9-4-45 Date completed 10-31-45 Elevation 825.1

PRODUCTION RECORD

1st 24 hours natural
 Date of shot _____ No. of quarts _____ From _____ To _____ From _____ to _____
 Date of acid _____ No. of gallons _____ shot _____
 1st 24 hours after acid _____
 Completed as: Oil Well _____ Gas Well _____ Dry Hole X

FORMATION AND CASING RECORD

Formation	Top	Bottom	Top Pay	Bottom Pay	Remarks	Casing	
						Size	Set at
Brown Dolomite	898	(-73)			Flo. wtr. 450-580.	10"	384
Mich. Stray	1045	1055	(-220)		(+375)	8-1/4"	749
Marshall	1130	1255	(-305)		H.F.S.W. 1135-1140.	6-5/8"	1275
Sunbury	2290	(-1465)			(-310)	5-3/16"	RH 3641
Berea	2345	(-1520)					
Antrim	2382	(-1557)					
Traverse Lime	2894	S.L.M.	(-2069)				
Dundee	3634	"	(-2809)		No water.		
Total Depth		3763	(-2938)				

Remarks 1016' eq. 1025' SLM; 1316' eq. 1317' SLM; 2805' eq. 2823' SLM; 2805' eq. 2823' SLM; 3529' eq. 3534' SLM.

Signed D. C. Shackelford