



Western Michigan University
ScholarWorks at WMU

Honors Theses

Lee Honors College

1-31-2014

A Series of Paintings Inspired by Italian Statuary

Crystal Shaulis

Western Michigan University, crystal.shaulis@live.com

Follow this and additional works at: https://scholarworks.wmich.edu/honors_theses



Part of the Fine Arts Commons

Recommended Citation

Shaulis, Crystal, "A Series of Paintings Inspired by Italian Statuary" (2014). *Honors Theses*. 2464.
https://scholarworks.wmich.edu/honors_theses/2464

This Honors Thesis-Open Access is brought to you for free and open access by the Lee Honors College at ScholarWorks at WMU. It has been accepted for inclusion in Honors Theses by an authorized administrator of ScholarWorks at WMU. For more information, please contact wmu-scholarworks@wmich.edu.





Pietra An Honors Thesis Exhibition

BY CRYSTAL SHAULIS

JANUARY 27th - 31st

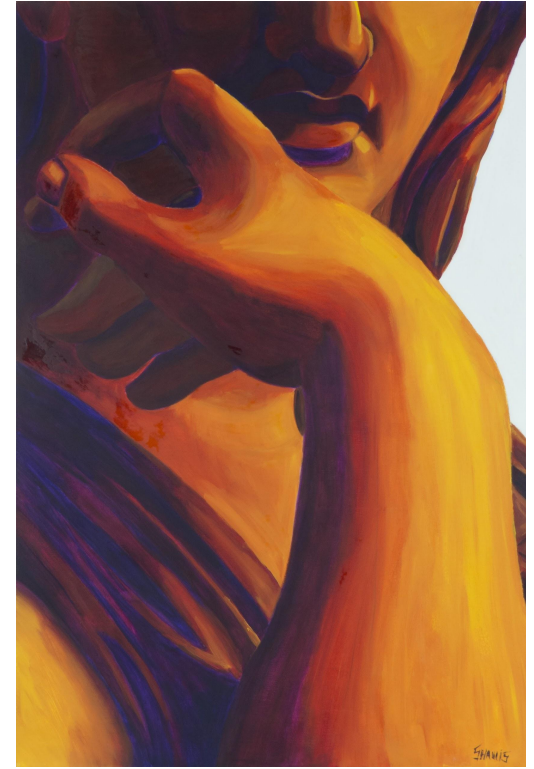
DeVRIES STUDENT GALLERY
RICHMOND CENTER for the VISUAL ARTS
GWEN FROSTIC SCHOOL OF ART
WESTERN MICHIGAN UNIVERSITY
KALAMAZOO, MICHIGAN



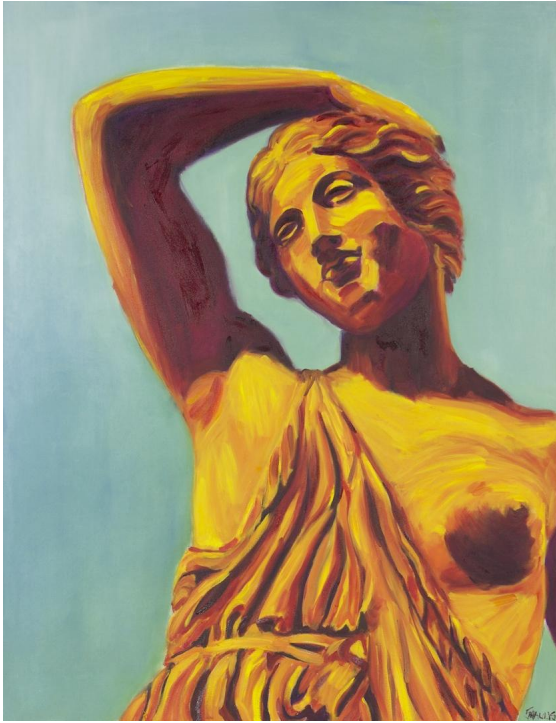
Thusnelda (2013)
oil on canvas
40in x 60in



Sabine (2013)
oil on canvas
40in x 60in



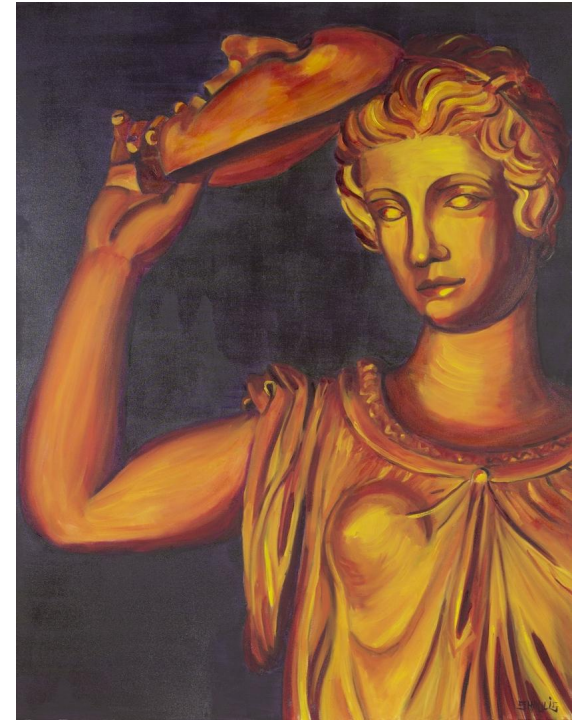
Thusnelda (2013)
oil on canvas
40in x 60in



Wounded Amazon (2014)
oil on canvas
51in x 66in

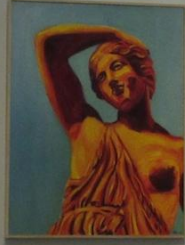


Hebe (2014)
oil on canvas
51in x 66in



Fraud (2014)
oil on canvas
51in x 66in

William T. and Robert A. DeVries
STUDENT ART GALLERY





pietra

