



Western Michigan University
ScholarWorks at WMU

Legacy Scout Tickets from Pure Oil Company

8-20-2021

MGRRE_PureOilScoutTickets_Burtraw, Edwin_1_na

MGRRE

Western Michigan University

Follow this and additional works at: <https://scholarworks.wmich.edu/pure>



Part of the Geology Commons

WMU ScholarWorks Citation

MGRRE, "MGRRE_PureOilScoutTickets_Burtraw, Edwin_1_na" (2021). *Legacy Scout Tickets from Pure Oil Company*. 2467.

<https://scholarworks.wmich.edu/pure/2467>

This Document is brought to you for free and open access via ScholarWorks at WMU. It has been accepted for inclusion in Legacy Scout Tickets from Pure Oil Company by an authorized administrator of ScholarWorks at WMU. See the National Digital Catalogue - Science Base Catalogue for more collections submitted by MGRRE.



MGRRE_PureOilScoutTickets_Burtraw, Edwin_1_na

API na

Permit Number na

Lease Name Burtraw, Edwin

Well Number 1

County Gratiot

Township 10N

Range 4W

Section 7

2021 DEQ or Pure co_name Gallagher

Pure Number 64

Latitude 43.2708747

Longitude -84.8261459

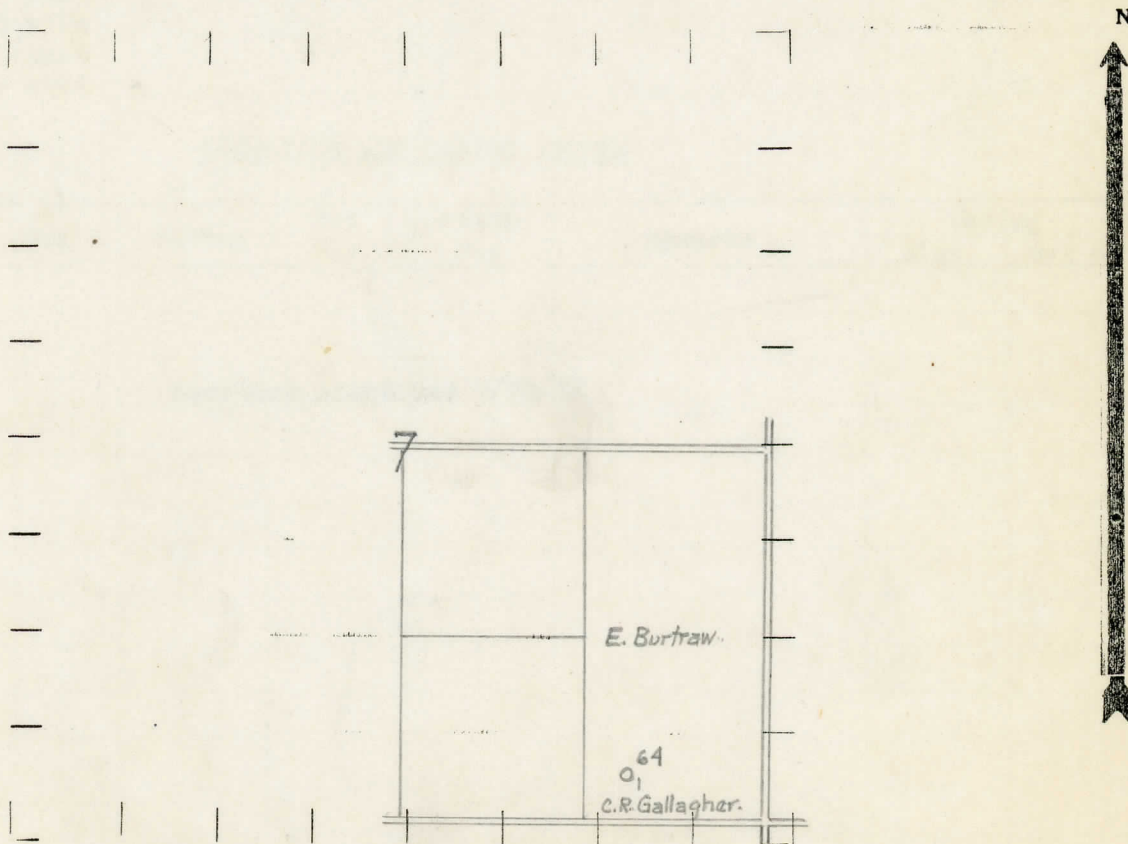
DATE 4-26-35 LOCATION REPORT No. 64
 STATE Michigan COUNTY Gratiot DIST. New Haven TWP. New Haven SEC. 7 TOWN 10-N RANGE 4-W
 WELL No. 1 (SERIAL No. 64) FARM Edwin Burtraw ACRES
 NAME OF STREAM OR WATERS _____ QUADRANGLE SW-SE-SE
 OPERATOR C. R. Gallagher Map New Haven Twp., Gratiot Co.
C.R. Gallagher New Haven - Gratiot

Feet from North Line of Farm
 " " East " " "
330 330 " " South " " "
330 330 " " West " " "
 Feet from North Line of Section
 " " East " " "
990 990 " " South " " "
330 330 " " West " " "

LEGEND

- LOCATION
- ⊕ RIG
- ⊕ DRILLING
- ☀ GAS WELL
- OIL WELL
- ⊕ SMALL OIL WELL
- ⊖ DRY HOLE
- ⊖ DRY SHOWING OIL
- ⊖ DRY SHOWING GAS
- ⊖ ABANDONED LOCATION
- ☀ ABANDONED GAS WELL
- ⊖ ABANDONED OIL WELL

NOTE: Below make tracing from map, (when no map is obtainable make sketch) showing farm, center of section, this location with measurements and also wells, dry holes, or other locations in the vicinity of this location.



REMARKS: _____

SIGNED

R. d. Yeager
Superintendent or Foreman.

Michigan Producing Division

Date July 25, 1935 No. 64
 State Michigan County Gratiot Dist. New Haven Twp. 10N Rge. 4W
 (Serial No.)
 Well No. 1 (County No.) 64 Farm Edwin Burtraw Acres
 Operator C. R. Gallagher Information secured ~~from~~ Scouting Dept. by
 Date well started Not started Date well completed Not completed Elevation

PRODUCTION RECORD

1st 24 hours natural LOCATION ABANDONED
 2nd 24 hours natural
 Date of shot No. of quarts From to From to
 Date of acid No. of gallons
 1st 24 hours after acid shot
 2nd 24 hours after acid shot

FORMATION AND CASING RECORD

Formation	Top	Bottom	Top Pay	Bottom Pay	Remarks	Casing	
						Size	Set at
Location abandoned 7/24/35							

Remarks

Signed *E. H. Bell*