



Western Michigan University
ScholarWorks at WMU

Legacy Scout Tickets from Pure Oil Company

8-20-2021

MGRRE_PureOilScoutTickets_SAXON, M. P._1_21057028400000

MGRRE

Western Michigan University

Follow this and additional works at: <https://scholarworks.wmich.edu/pure>



Part of the Geology Commons

WMU ScholarWorks Citation

MGRRE, "MGRRE_PureOilScoutTickets_SAXON, M. P._1_21057028400000" (2021). *Legacy Scout Tickets from Pure Oil Company*. 2488.

<https://scholarworks.wmich.edu/pure/2488>

This Document is brought to you for free and open access via ScholarWorks at WMU. It has been accepted for inclusion in Legacy Scout Tickets from Pure Oil Company by an authorized administrator of ScholarWorks at WMU. See the National Digital Catalogue - Science Base Catalogue for more collections submitted by MGRRE.



MGRRE_PureOilScoutTickets_SAXON, M. P._1_21057028400000

API 21057028400000

Permit Number 2840

Lease Name SAXON, M. P.

Well Number 1

County Gratiot

Township 9N

Range 3W

Section 28

2021 DEQ or Pure co_name WELLER C E

Pure Number 85

Latitude 43.14065

Longitude -84.6783

DATE 10/24/35

LOCATION REPORT

No. 85

STATE Michigan COUNTY Gratiot DIST. Fulton TWP. Fulton SEC. 28 TOWN. 9 N RANGE 3 W

WELL No. 1 (SERIAL No. 85) FARM Milton P. Saxon ACRES

NAME OF STREAM OR WATERS QUADRANGLE SW-SW-NW

OPERATOR Charles E. Weller Map Fulton-Gratiot

Feet from North Line of Farm
" " East " " "

330 330 " " South " " "
330 330 " " West " " "

Feet from North Line of Section
" " East " " "

330 330 " " South " " "
330 330 " " West " " "

LEGEND

○ LOCATION

⊙ RIG

⊕ DRILLING

☀ GAS WELL

● OIL WELL

⦿ SMALL OIL WELL

⊖ DRY HOLE

⦿ DRY SHOWING OIL

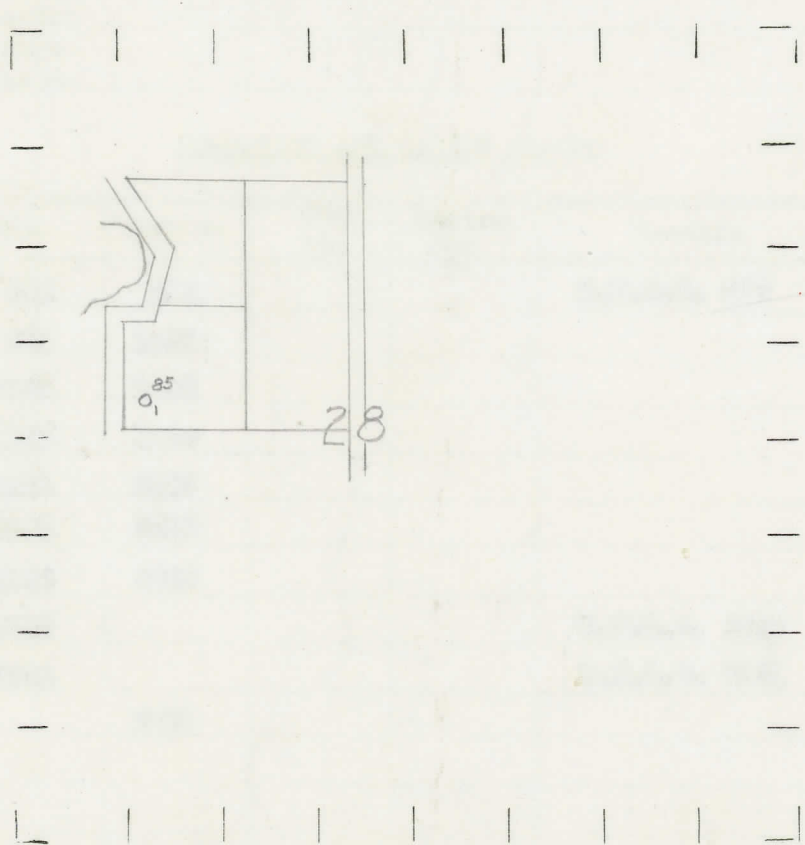
⊖ DRY SHOWING GAS

⊖ ABANDONED LOCATION

☀ ABANDONED GAS WELL

⦿ ABANDONED OIL WELL

NOTE: Below make tracing from map, (when no map is obtainable make sketch) showing farm, center of section, this location with measurements and also wells, dry holes, or other locations in the vicinity of this location.



REMARKS:

SIGNED

R. L. Yeaman
Superintendent or Foreman.

COMPLETION RECORD OF WELLS DRILLED BY OTHER OPERATORS

Michigan Producing Division

Date 12-26-35 No. 85
 State Mich. County Gratiot Dist. Fulton Sec. 28 Twp. 9 N Rge. 3 W
 Well No. 1 (Serial No.) (County No.) 85 Farm Milton P. Saxon Acres _____
 Operator Chas. E. Weller Information secured ~~from~~ Scouting Dept. by _____
 Date well started 10-30-35 Date well completed 12-21-35 Elevation _____

PRODUCTION RECORD

1st 24 hours natural Dry Hole
 2nd 24 hours natural _____
 Date of shot _____ No. of quarts _____ From _____ to _____ From _____ to _____
 Date of acid _____ No. of gallons _____
 1st 24 hours after acid _____ shot
 2nd 24 hours after acid _____ shot

FORMATION AND CASING RECORD

Formation	Top	Bottom	Top Pay	Bottom Pay	Remarks	Casing	
						Size	Set at
Stray	875	915			H.F.S.W. 875	10"	306
Marshall	955	1025				8 1/4"	760
Red Rock	1025	1105				6-5/8"	1184
" "	1135	1160				5-3/16"	3012
Sunbury	2185	2195					
Berea	2195	2210					
Antrim	2250	2629					
Traverse	2629				H.F.S.W. 2740		
Dundee	3084				H.F.S.W. 3121		
Total Depth		3121					

Remarks Show oil 3092.

3084
747
2337

Signed EAT Bell