



Western Michigan University
ScholarWorks at WMU

Legacy Scout Tickets from Pure Oil Company

8-20-2021

MGRRE_PureOilScoutTickets_SMITH S S_2_21057035370000

MGRRE

Western Michigan University

Follow this and additional works at: <https://scholarworks.wmich.edu/pure>



Part of the Geology Commons

WMU ScholarWorks Citation

MGRRE, "MGRRE_PureOilScoutTickets_SMITH S S_2_21057035370000" (2021). *Legacy Scout Tickets from Pure Oil Company*. 2524.

<https://scholarworks.wmich.edu/pure/2524>

This Document is brought to you for free and open access via ScholarWorks at WMU. It has been accepted for inclusion in Legacy Scout Tickets from Pure Oil Company by an authorized administrator of ScholarWorks at WMU. See the National Digital Catalogue - Science Base Catalogue for more collections submitted by MGRRE.



MGRRE_PureOilScoutTickets_SMITH S S_2_21057035370000

API 21057035370000

Permit Number 3537

Lease Name SMITH S S

Well Number 2

County Gratiot

Township 10N

Range 4W

Section 3

2021 DEQ or Pure co_name NEW HAVEN ENERGY LLC

Pure Number 122

Latitude 43.2794137

Longitude -84.7648746

THE PURE OIL COMPANY

DATE September 10, 1936

LOCATION REPORT

No. 122 *

STATE Michigan COUNTY Gratiot DIST. New Haven TWP. New Haven SEC. 3 TOWN 10 N RANGE 4 W
 WELL No. 22 (SERIAL No. 122) FARM SS. S. Smith ACRES _____

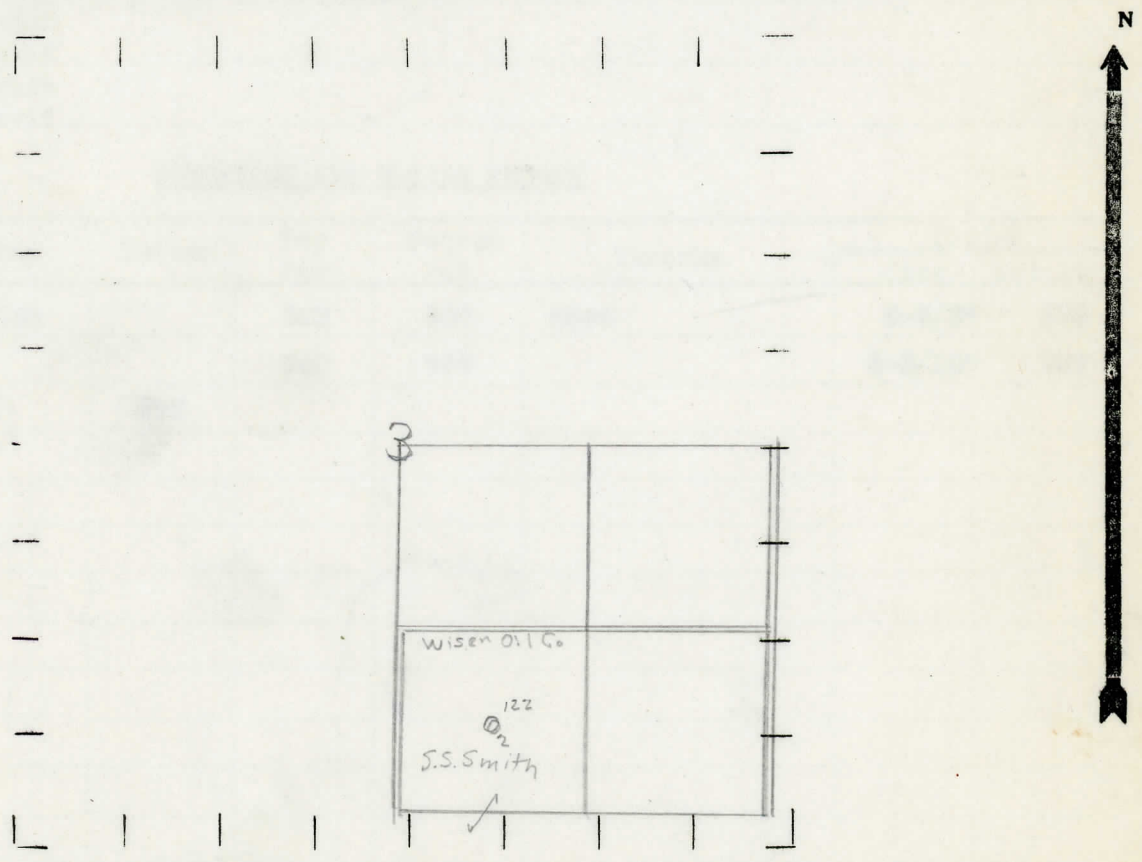
NAME OF STREAM OR WATERS _____ QUADRANGLE 6-SW-SE

OPERATOR Wiser Oil Company Map New Haven Township, Gratiot County
Wiser Oil Co. New Haven - Gratiot

6660 Feet from North Line of Farm
6660 " " East " " "
 " " South " " "
 " " West " " "
 Feet from North Line of Section
 " " East " " "
6660 " " South " " "
6660 " " West " 1/4 "

- LEGEND**
- LOCATION
 - ⊕ RIG
 - ⊕ DRILLING
 - ☀ GAS WELL
 - OIL WELL
 - SMALL OIL WELL
 - ⊖ DRY HOLE
 - ⊖ DRY SHOWING OIL
 - ⊖ DRY SHOWING GAS
 - ⊖ ABANDONED LOCATION
 - ☀ ABANDONED GAS WELL
 - ABANDONED OIL WELL

NOTE: Below make tracing from map, (when no map is obtainable make sketch) showing farm, center of section, this location with measurements and also wells, dry holes, or other locations in the vicinity of this location.



REMARKS:

SIGNED

Superintendent or Foreman.

