



Western Michigan University  
ScholarWorks at WMU

---

Legacy Scout Tickets from Pure Oil Company

---

8-20-2021

**MGRRE\_PureOilScoutTickets\_TOWNSEND  
LEE\_2\_21057037210000**

MGRRE  
*Western Michigan University*

Follow this and additional works at: <https://scholarworks.wmich.edu/pure>



Part of the Geology Commons

---

#### **WMU ScholarWorks Citation**

MGRRE, "MGRRE\_PureOilScoutTickets\_TOWNSEND LEE\_2\_21057037210000" (2021). *Legacy Scout Tickets from Pure Oil Company*. 2543.  
<https://scholarworks.wmich.edu/pure/2543>

This Document is brought to you for free and open access via ScholarWorks at WMU. It has been accepted for inclusion in Legacy Scout Tickets from Pure Oil Company by an authorized administrator of ScholarWorks at WMU. See the National Digital Catalogue - Science Base Catalogue for more collections submitted by MGRRE.



---

**MGRRE\_PureOilScoutTickets\_TOWNSEND LEE\_2\_21057037210000**

API 21057037210000

Permit Number 3721

Lease Name TOWNSEND LEE

Well Number 2

County Gratiot

Township 10N

Range 4W

Section 10

2021 DEQ or Pure co\_name D T E GAS COMPANY

Pure Number 141

Latitude 43.27596

Longitude -84.7699

The Pure Oil Company  
**THE PURE OIL COMPANY**

DATE December 3, 1936

**LOCATION REPORT**

No. 141

STATE Michigan

COUNTY Gratiot

Gratiot

DIST. New Haven

SEC. 10

TOWN 10 N

RANGE 4 W

WELL No. 22 (SERIAL No. 141) FARM

PREC. Lee Townsend

ACRES

NAME OF STREAM OR WATERS

QUADRANGLE

C-NE-NW  
C NE NW

OPERATOR Wiser Oil Company

Map

New Haven Township, Gratiot County

660 660 Feet from North Line of Farm

660 660 " " East " " "

" " South " " "

" " West " " "

660 660 Feet from North Line of Section

660 660 " " East " 1/4 "

" " South " " "

" " West " " "

**LEGEND**

○ LOCATION

⊕ RIG

⊕ DRILLING

☀ GAS WELL

● OIL WELL

⬮ SMALL OIL WELL

⊖ DRY HOLE

⬮ DRY SHOWING OIL

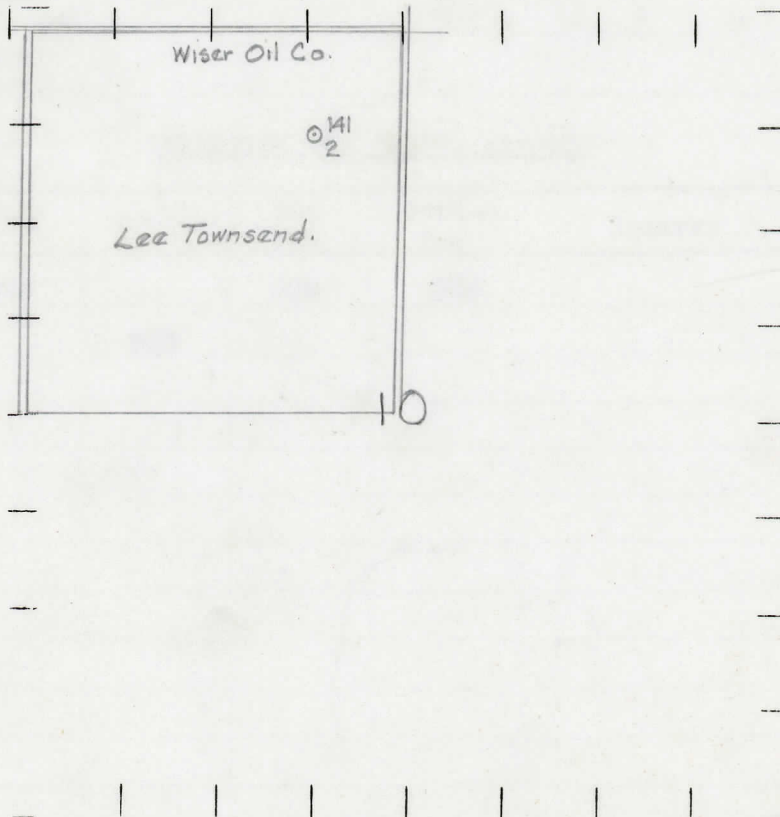
⊖ DRY SHOWING GAS

⊖ ABANDONED LOCATION

☀ ABANDONED GAS WELL

⬮ ABANDONED OIL WELL

NOTE: Below make tracing from map, (when no map is obtainable make sketch) showing farm, center of section, this location with measurements and also wells, dry holes, or other locations in the vicinity of this location.



REMARKS:

SIGNED

Superintendent or Foreman.

COMPLETION RECORD OF WELLS DRILLED BY OTHER OPERATORS

Michigan Producing Division

Date December 17, 1936 No. 141  
 State Michigan County Gratiot Dist. New Haven Sec. 10 Twp. 10 N Rge. 4 W  
 Well No. 2 (Serial No.) (County No.) 141 Farm Lee Townsend Acres.....  
 Operator The Wiser Oil Company Information secured ~~from~~ Scouting Department by  
 Date well started 12-5-36 Date well completed 12-16-36 Elevation 765.4

PRODUCTION RECORD

1st 24 hours natural 7,825,000 cubic feet  
 2nd 24 hours natural .....

Date of shot..... No. of quarts..... From ..... to ..... From ..... to .....

Date of acid..... No. of gallons.....

1st 24 hours after acid..... shot  
 2nd 24 hours after acid..... shot

FORMATION AND CASING RECORD

Formation	Top	Bottom	Top Pay	Bottom Pay	Remarks	Casing	
						Size	Set At
Stray	969		969	975		8-5/8"	451
Total Depth		980				6-5/8"	913

Remarks .....