



Western Michigan University
ScholarWorks at WMU

Legacy Scout Tickets from Pure Oil Company

8-20-2021

**MGRRE_PureOilScoutTickets_AKIN, WILLIAM
L_2_21057039170000**

MGRRE
Western Michigan University

Follow this and additional works at: <https://scholarworks.wmich.edu/pure>



Part of the Geology Commons

WMU ScholarWorks Citation

MGRRE, "MGRRE_PureOilScoutTickets_AKIN, WILLIAM L_2_21057039170000" (2021). *Legacy Scout Tickets from Pure Oil Company*. 2560.
<https://scholarworks.wmich.edu/pure/2560>

This Document is brought to you for free and open access via ScholarWorks at WMU. It has been accepted for inclusion in Legacy Scout Tickets from Pure Oil Company by an authorized administrator of ScholarWorks at WMU. See the National Digital Catalogue - Science Base Catalogue for more collections submitted by MGRRE.



MGRRE_PureOilScoutTickets_AKIN, WILLIAM L_2_21057039170000

API 21057039170000

Permit Number 3917

Lease Name AKIN, WILLIAM L

Well Number 2

County Gratiot

Township 10N

Range 4W

Section 9

2021 DEQ or Pure co_name D T E GAS COMPANY

Pure Number 158

Latitude 43.2759298

Longitude -84.7797606

The Pure Oil Company
COMPLETION RECORD OF THE PURE OIL COMPANY AND OTHER OPERATORS

DATE March 4, 1937

LOCATION REPORT

No. 158

STATE Michigan COUNTY Gratiot DIST. New Haven TWP. New Haven SEC. 9 TOWN 10 N RANGE 4 W
WELL No. 22 (SERIAL No. 158) FARM William L. Akin ACRES

NAME OF STREAM OR WATERS _____ QUADRANGLE C-NE-NE
C NE NE

OPERATOR W. E. Ross Map New Haven Township, Gratiot County
W. E. Ross New Haven - Grat.

660660 Feet from North Line of Farm

660660 " " East " " "

" " South " " "

" " West " " "

660660 Feet from North Line of Section

660660 " " East " " "

" " South " " "

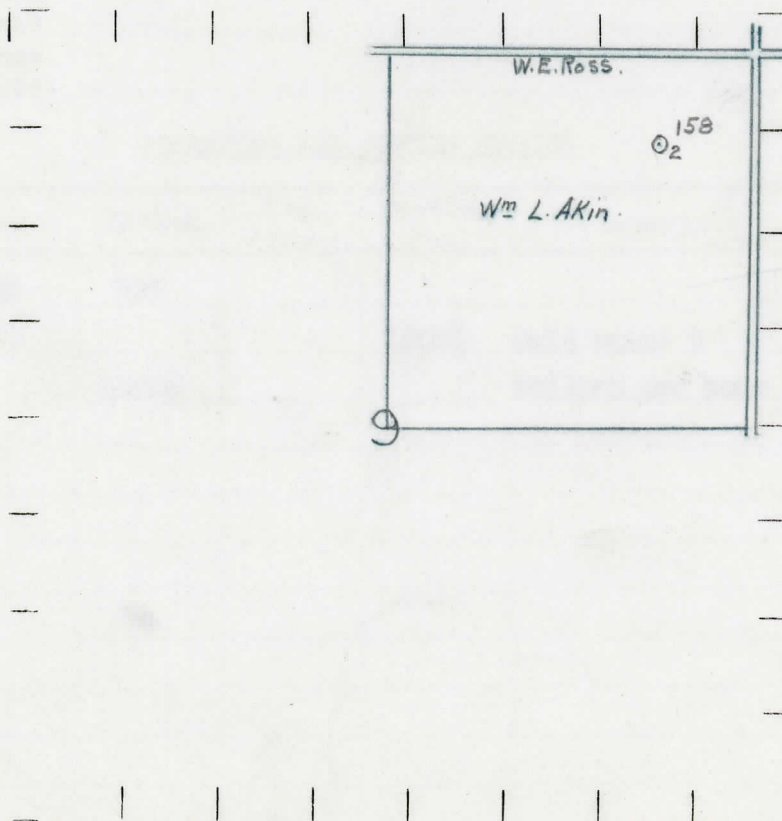
" " West " " "

Low

LEGEND

- | | |
|------------------|----------------------|
| ○ LOCATION | ⊙ DRY HOLE |
| ① RIG | ⊕ DRY SHOWING OIL |
| ⊕ DRILLING | ⊙ DRY SHOWING GAS |
| ☀ GAS WELL | ⊕ ABANDONED LOCATION |
| ● OIL WELL | ☀ ABANDONED GAS WELL |
| ⊕ SMALL OIL WELL | ⊕ ABANDONED OIL WELL |

NOTE: Below make tracing from map. (when no map is obtainable make sketch) showing farm, center of section, this location with measurements and also wells, dry holes, or other locations in the vicinity of this location.



REMARKS:

SIGNED

Superintendent or Foreman.

