



Western Michigan University
ScholarWorks at WMU

Legacy Scout Tickets from Pure Oil Company

8-20-2021

**MGRRE_PureOilScoutTickets_HIRSCHMAN, M.
J._1_21057042560000**

MGRRE
Western Michigan University

Follow this and additional works at: <https://scholarworks.wmich.edu/pure>



Part of the Geology Commons

WMU ScholarWorks Citation

MGRRE, "MGRRE_PureOilScoutTickets_HIRSCHMAN, M. J._1_21057042560000" (2021). *Legacy Scout Tickets from Pure Oil Company*. 2565.
<https://scholarworks.wmich.edu/pure/2565>

This Document is brought to you for free and open access via ScholarWorks at WMU. It has been accepted for inclusion in Legacy Scout Tickets from Pure Oil Company by an authorized administrator of ScholarWorks at WMU. See the National Digital Catalogue - Science Base Catalogue for more collections submitted by MGRRE.



MGRRE_PureOilScoutTickets_HIRSCHMAN, M. J._1_21057042560000

API 21057042560000

Permit Number 4256

Lease Name HIRSCHMAN, M. J.

Well Number 1

County Gratiot

Township 10N

Range 3W

Section 13

2021 DEQ or Pure co_name CARTER OIL CO

Pure Number 163

Latitude 43.25726

Longitude -84.60201

The Pure Oil Company
THE PURE OIL COMPANY

REGISTRATION RECORD OF WELLS AND OTHER OPERATORS

DATE June 17, 1937

LOCATION REPORT

No. 163

STATE Michigan COUNTY Gratiot DIST. Newark TWP. Newark SEC. 13³ TOWN 10 N RANGE 3 W

WELL No. 11 (SERIAL No. 163) FARM M. J. Hirschman ACRES

NAME OF STREAM OR WATERS QUADRANGLE C. E. SE. NE

OPERATOR Carter Oil Company Map Newark Township, Gratiot County

660660 Feet from North Line of Farm

320330 " " East " " "

" " South " " "

" " West " " "

Feet from North Line of Section

330330 " " East " " "

660660 " " South " 1/4 "

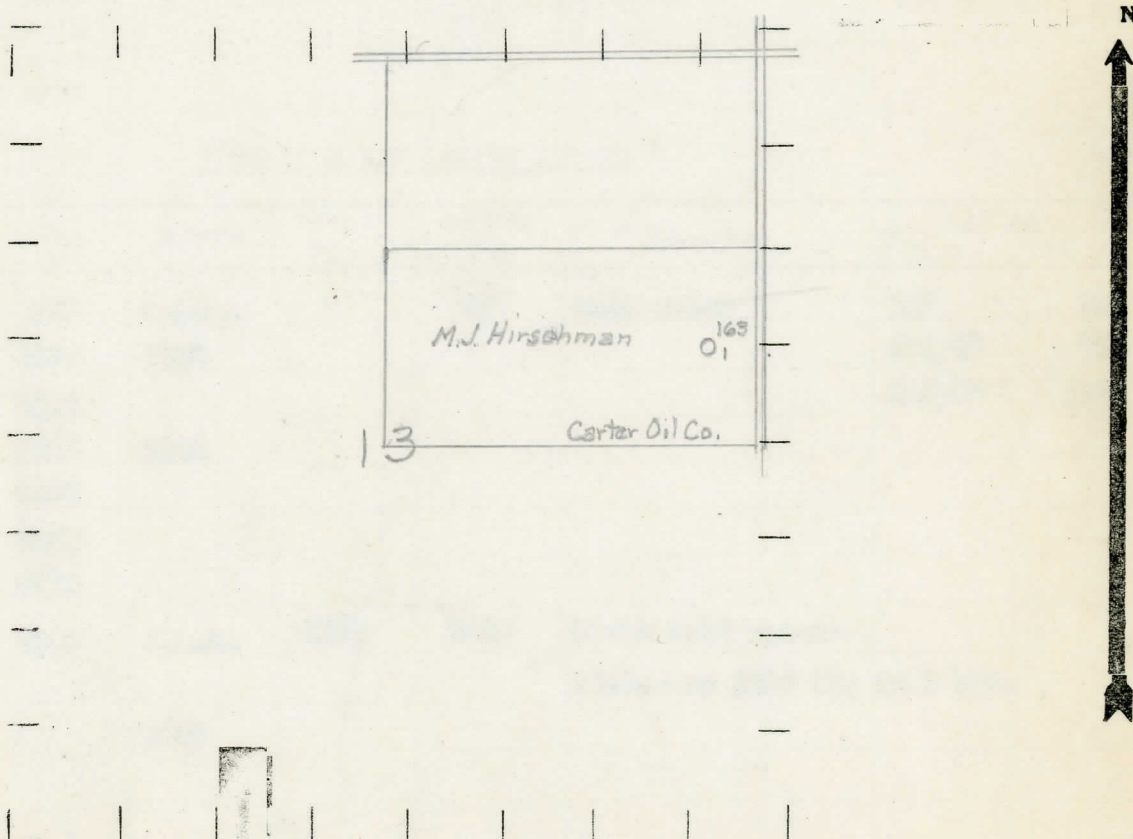
" " West " " "



LEGEND

- LOCATION
- ⊕ RIG
- ⊕ DRILLING
- ☀ GAS WELL
- OIL WELL
- ⊕ SMALL OIL WELL
- ⊕ DRY HOLE
- ⊕ DRY SHOWING OIL
- ⊕ DRY SHOWING GAS
- ⊕ ABANDONED LOCATION
- ☀ ABANDONED GAS WELL
- ⊕ ABANDONED OIL WELL

NOTE: Below make tracing from map, (when no map is obtainable make sketch) showing farm, center of section, this location with measurements and also wells, dry holes, or other locations in the vicinity of this location.



REMARKS:

SIGNED

R. L. Yeager
Superintendent or Foreman.

COMPLETION RECORD OF WELLS DRILLED BY OTHER OPERATORS

Michigan Producing Division

Date August 12, 1937 No. 163
 State Michigan County Gratiot Dist. Nowark
 (Serial No.) Twp. Nowark Sec. 13 Twp. 10 N Rge. 3 W
 Well No. 1 (County No.) 163 Farm M. J. Hirschman Acres _____
 Operator Carter Oil Company Information secured from Scouting Department
 Date well started 6-30-37 Date well completed 8-5-37 Elevation 757.1

PRODUCTION RECORD

1st 24 hours natural Dry Hole
 2nd 24 hours natural _____
 Date of shot _____ No. of quarts _____ From _____ to _____ From _____ to _____
 Date of acid _____ No. of gallons _____
 1st 24 hours after acid shot _____
 2nd 24 hours after acid shot _____

FORMATION AND CASING RECORD

| Formation | Top | Bottom | Top Pay | Bottom Pay | Remarks | Casing | |
|----------------|------|--------|---------|------------|---|--------|--------|
| | | | | | | Size | Set At |
| Marshall | 932 | S.L.M. | | 937 | Salt water | 10" | 321 |
| Red Rock | 1030 | 1220 | | | | 8-1/4" | 755 |
| Sunbury | 2215 | | | | | 6-5/8" | 1247 |
| Berea | 2240 | 2295 | | | | | |
| Antrim | 2295 | | | | | | |
| Traverse Form. | 2666 | | | | | | |
| Traverse Line | 2710 | | | | | | |
| Dundee | 3148 | S.L.M. | 3202 | 3209 | Black salt water- filled up 2500 ft. in 5 hrs. | | |
| Total Depth | | 3209 | | | | | |

Remarks _____

Signed D. C. Shackelford