



Western Michigan University
ScholarWorks at WMU

Legacy Scout Tickets from Pure Oil Company

8-20-2021

**MGRRE_PureOilScoutTickets_CREASER, P.
W._1_21057044530000**

MGRRE
Western Michigan University

Follow this and additional works at: <https://scholarworks.wmich.edu/pure>



Part of the Geology Commons

WMU ScholarWorks Citation

MGRRE, "MGRRE_PureOilScoutTickets_CREASER, P. W._1_21057044530000" (2021). *Legacy Scout Tickets from Pure Oil Company*. 2566.
<https://scholarworks.wmich.edu/pure/2566>

This Document is brought to you for free and open access via ScholarWorks at WMU. It has been accepted for inclusion in Legacy Scout Tickets from Pure Oil Company by an authorized administrator of ScholarWorks at WMU. See the National Digital Catalogue - Science Base Catalogue for more collections submitted by MGRRE.



MGRRE_PureOilScoutTickets_CREASER, P. W._1_21057044530000

API 21057044530000

Permit Number 4453

Lease Name CREASER, P. W.

Well Number 1

County Gratiot

Township 11N

Range 2W

Section 18

2021 DEQ or Pure co_name RED MAN OIL CO

Pure Number 164

Latitude 43.33792

Longitude -84.59407

DATE September 2, 1937

LOCATION REPORT

No. 164

STATE Michigan

COUNTY Gratiot

DIST. Emerson

SEC. 18

TOWN 11 N

RANGE 2 W

WELL No. 1 (SERIAL No. 164) FARM

PREC. P.W. Creaser

ACRES

NAME OF STREAM OR WATERS

QUADRANGLE NE SW SE

OPERATOR Red-Man Oil Company

Map Emerson Township, Gratiot County

330 330 Feet from North Line of Farm

430 430 " " East " " "

" " South " " "

" " West " " "

Feet from North Line of Section

" " East " " "

990 990 " " South " " "

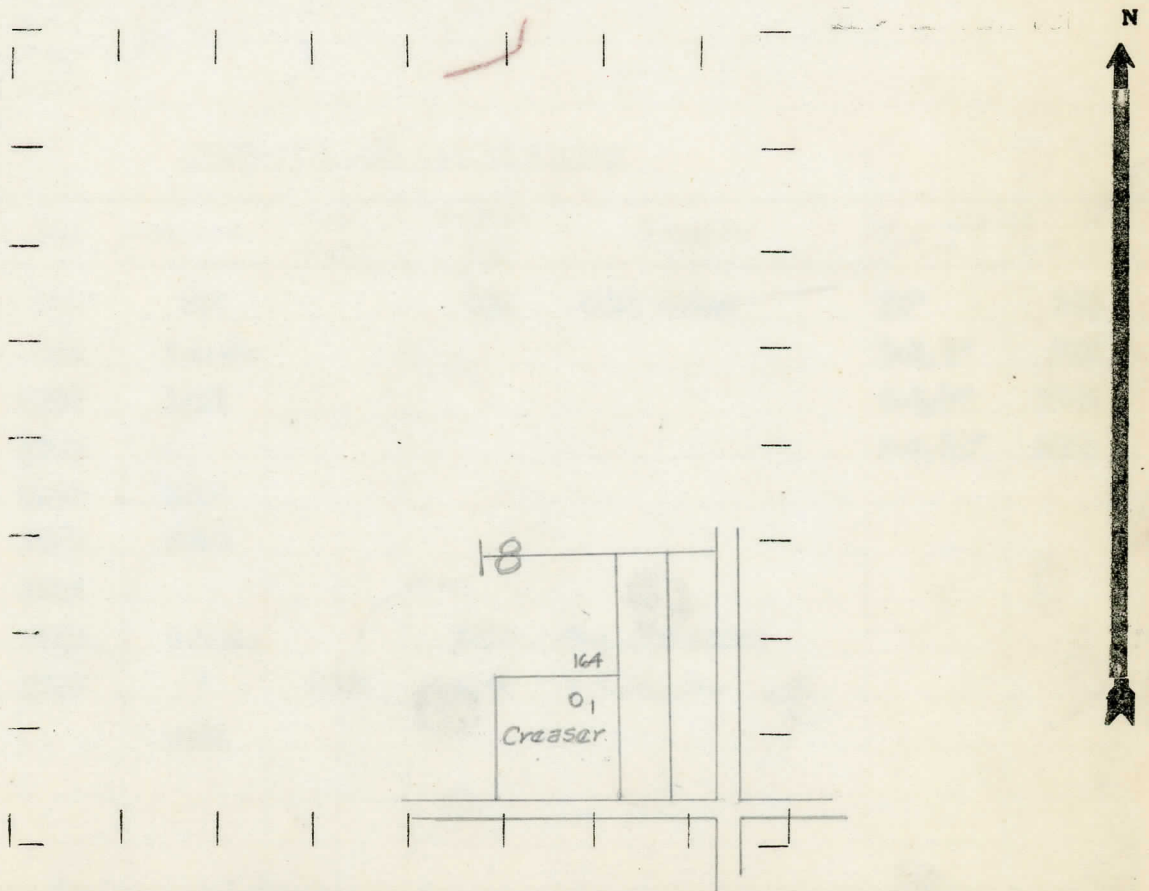
890 890 " " West "1/4"

- LOCATION
- ⊙ RIG
- ⊕ DRILLING
- ☀ GAS WELL
- OIL WELL
- ⦿ SMALL OIL WELL

LEGEND

- ⊙ DRY HOLE
- ⦿ DRY SHOWING OIL
- ⊕ DRY SHOWING GAS
- ⦿ ABANDONED LOCATION
- ☀ ABANDONED GAS WELL
- ⦿ ABANDONED OIL WELL

NOTE: Below make tracing from map, (when no map is obtainable make sketch) showing farm, center of section, this location with measurements and also wells, dry holes, or other locations in the vicinity of this location.



REMARKS:

SIGNED

Superintendent or Foreman.

COMPLETION RECORD OF WELLS DRILLED BY OTHER OPERATORS

~~Michigan Producing~~ Division

Date November 18, 1937 No. 164
 State Michigan County Gratiot Dist. Emerson Twp. 18 Sec. 11 N Rge. 2 W
 Well No. 1 (Serial No.) (County No.) 164 Farm P. W. Creaser Acres
 Operator Red-Man Oil Company Information secured ~~from~~ Scouting Department
 Date well started 9-1-37 Date well completed 11-17-37 Elevation 773.0

PRODUCTION RECORD

1st 24 hours natural Dry Hole
 2nd 24 hours natural
 Date of shot No. of quarts From to From to
 Date of acid No. of gallons
 1st 24 hours after acid shot
 2nd 24 hours after acid shot

FORMATION AND CASING RECORD

Formation	Top	Bottom	Top Pay	Bottom Pay	Remarks	Casing	
						Size	Set At
Stray	955	952		963	Salt water	10"	346
Marshall	952	S.L.M.				8-1/4"	786
Red Rock	1038	1232				6-5/8"	1238
Sunbury	2242					5-5/16"	3231
Berea	2255	2314					
Antrim	2333	2393					
Traverse Form.	2693						
Traverse Lime	2710	S.L.M.		2810	Gas and water		
Dundee	3228	"	3283	3284	H.F.B.S.W.		
Total Depth		3284					

Remarks

Signed D. C. Shackelford