



Western Michigan University
ScholarWorks at WMU

Legacy Scout Tickets from Pure Oil Company

8-20-2021

MGRRE_PureOilScoutTickets_SMITH_1_21057065170000

MGRRE

Western Michigan University

Follow this and additional works at: <https://scholarworks.wmich.edu/pure>



Part of the Geology Commons

WMU ScholarWorks Citation

MGRRE, "MGRRE_PureOilScoutTickets_SMITH_1_21057065170000" (2021). *Legacy Scout Tickets from Pure Oil Company*. 2579.

<https://scholarworks.wmich.edu/pure/2579>

This Document is brought to you for free and open access via ScholarWorks at WMU. It has been accepted for inclusion in Legacy Scout Tickets from Pure Oil Company by an authorized administrator of ScholarWorks at WMU. See the National Digital Catalogue - Science Base Catalogue for more collections submitted by MGRRE.



MGRRE_PureOilScoutTickets_SMITH_1_21057065170000

API 21057065170000

Permit Number 6517

Lease Name SMITH

Well Number 1

County Gratiot

Township 10N

Range 4W

Section 20

2021 DEQ or Pure co_name CHAPMAN OIL CO AND UNION DRILLING AND PRODUCING

Pure Number 178

Latitude 43.23907

Longitude -84.79978

THE PURE OIL COMPANY

DATE July 27, 1939

LOCATION REPORT

No. 178

STATE Michigan COUNTY Gratiot DIST. New Haven TWP. New Haven SEC. 20 TOWN 10 N RANGE 4 W

WELL No. 1 (SERIAL No. 178) FARM Arthur W. Smith ACRES

NAME OF STREAM OR WATERS QUADRANGLE C S₂ NE SE

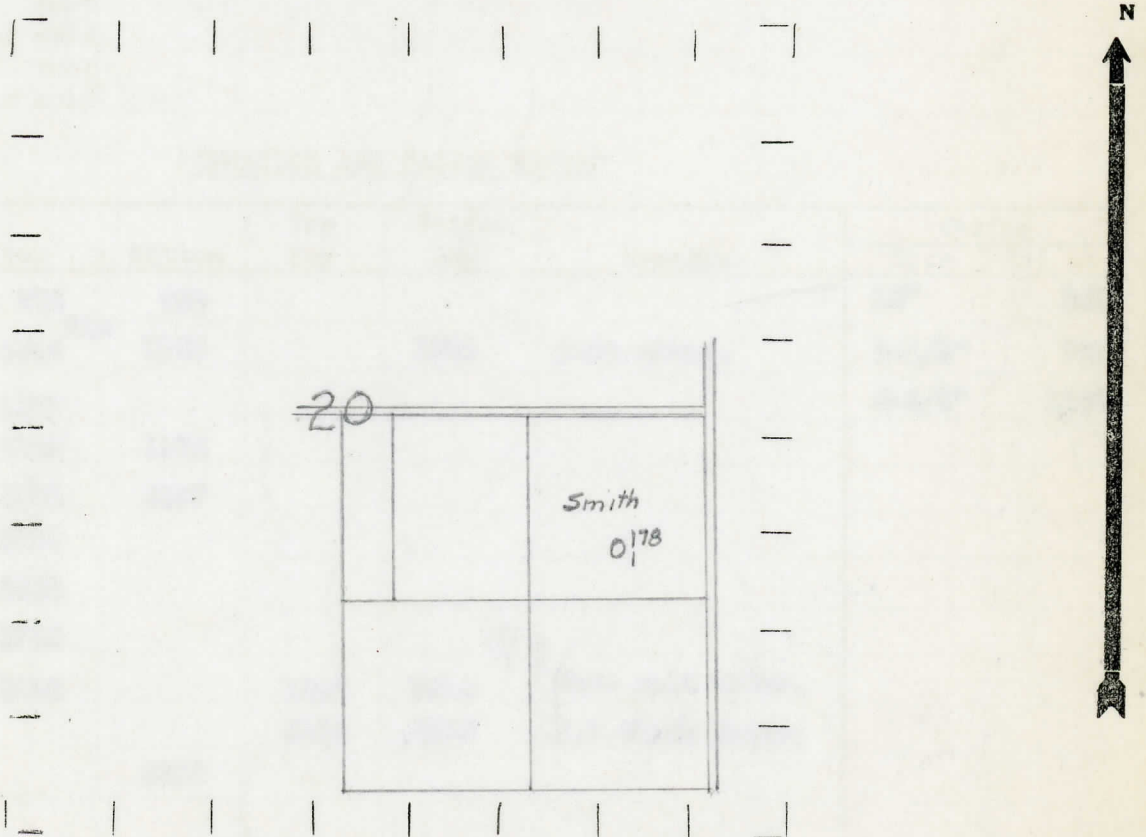
OPERATOR Chapman Oil Company, et al Map New Haven Township, Gratiot County
Chapman Oil Co. et al. New Haven - Gratiot.

Feet from North Line of Farm
 66060 " " East " " "
 33030 " " South " " "
 66060 " " West " " "
 99090 Feet from North Line of Section
 66060 " " East " " "
 " " South " " "
 " " West " " "

LEGEND

- LOCATION
- ⊕ RIG
- ⊕ DRILLING
- ☀ GAS WELL
- OIL WELL
- ⊕ SMALL OIL WELL
- ⊙ DRY HOLE
- ⊕ DRY SHOWING OIL
- ⊙ DRY SHOWING GAS
- ⊙ ABANDONED LOCATION
- ☀ ABANDONED GAS WELL
- ⊙ ABANDONED OIL WELL

NOTE: Below make tracing from map, (when no map is obtainable make sketch) showing farm, center of section, this location with measurements and also wells, dry holes, or other locations in the vicinity of this location.



REMARKS:

SIGNED

R. L. H.

Superintendent or Foreman.

Michigan Producing Division

Date October 5, 1939 No. 178
 State Mich. County Gratiot Twp. New Haven Sec. 20 Twp. 10 N Rge. 4 W
 Well No. 1 (Serial No.) 178 Farm Arthur W. Smith Acres _____
 Operator Chapman Oil Company, et al Information secured ~~From~~ By Scouting Department
 Date well started 8-30-39 Dated well completed 10-3-39 Elevation 779.5

PRODUCTION RECORD

1st 24 hours natural Dry Hole
 2nd 24 hours natural _____
 Date of shot _____ No. of quarts _____ From _____ to _____ From _____ to _____
 Date of acid _____ No. of gallons _____
 shot _____
 1st 24 hours after acid _____
 shot _____
 2nd 24 hours after acid _____

FORMATION AND CASING RECORD

Formation	Top	Bottom	Top Pay	Bottom Pay	Remarks	Casing	
						Size	Set at
Stray	973	983				10"	365
Marshall	1045	1262		1052	Salt water.	8-1/4"	765
Red Rock	1107					6-5/8"	1268
" "	1160	1234					
Sunbury	2293	2307					
Berea	2307						
Antrim	2335						
Traverse Line	2722						
Dundee	3198		3205	3210	Show salt water.		
			3244	3256	H.F. Black water.		
Total Depth		3256					

Remarks 1141' C.T.M. equals 1147' S.L.M.

Signed D. C. Shackelford