



Western Michigan University
ScholarWorks at WMU

Legacy Scout Tickets from Pure Oil Company

8-20-2021

MGRRE_PureOilScoutTickets_COOK, E_1_21057080190000

MGRRE

Western Michigan University

Follow this and additional works at: <https://scholarworks.wmich.edu/pure>



Part of the Geology Commons

WMU ScholarWorks Citation

MGRRE, "MGRRE_PureOilScoutTickets_COOK, E_1_21057080190000" (2021). *Legacy Scout Tickets from Pure Oil Company*. 2585.

<https://scholarworks.wmich.edu/pure/2585>

This Document is brought to you for free and open access via ScholarWorks at WMU. It has been accepted for inclusion in Legacy Scout Tickets from Pure Oil Company by an authorized administrator of ScholarWorks at WMU. See the National Digital Catalogue - Science Base Catalogue for more collections submitted by MGRRE.



MGRRE_PureOilScoutTickets_COOK, E_1_21057080190000

API 21057080190000

Permit Number 8019

Lease Name COOK, E

Well Number 1

County Gratiot

Township 10N

Range 2W

Section 4

2021 DEQ or Pure co_name G P PRODUCTION AND DRILLING CORP

Pure Number 189

Latitude 43.28702

Longitude -84.54591

THE PURE OIL COMPANY

DATE September 18, 1940 LOCATION RECORD OF LOCATION REPORT OTHER OPERATORS

No. 189
10 N
10 N RANGE 24 W

STATE Michigan COUNTY Gratiot DISTRICT North Star TWP. North Star SEC. 4 TOWN 10 N RANGE 24 W

WELL No. 1 (SERIAL No. 189) FARM E. Cook ACRES COOK

NAME OF STREAM OR WATERS _____ QUADRANGLE C N 1/2 SE NE

OPERATOR Vic R. Wilson Map North Star Township, Gratiot County

330 330 Feet from North Line of Farm

660 660 " " East " " "

" " South " " "

660 660 " " West " " "

Feet from North Line of Section

660 660 " " East " 1/4

990 990 " " South " " "

" " West " " "

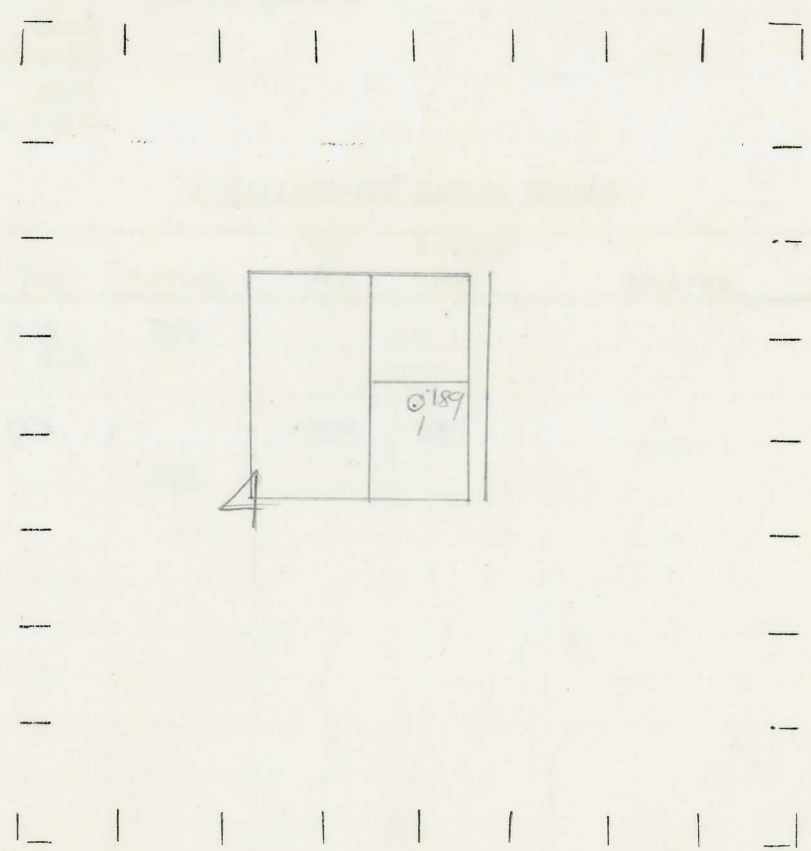
Sp 9-16-40

North Star-Gratiot

LEGEND

- LOCATION
- ⊕ DRILLING
- ☀ GAS WELL
- OIL WELL
- ⊙ SMALL OIL WELL
- ⊖ DRY HOLE
- ⊙ DRY SHOWING OIL
- ⊙ DRY SHOWING GAS
- ⊖ ABANDONED LOCATION
- ☀ ABANDONED GAS WELL
- ⊙ ABANDONED OIL WELL

NOTE: Below make tracing from map. (when no map is obtainable make sketch) showing farm, center of section, this location with measurements and also wells, dry holes, or other locations in the vicinity of this location.



REMARKS:

SIGNED

W
Superintendent or Foreman.

