



Western Michigan University
ScholarWorks at WMU

Legacy Scout Tickets from Pure Oil Company

8-20-2021

**MGRRE_PureOilScoutTickets_WAGNER, CHARLES
W._1_21057081670000**

MGRRE
Western Michigan University

Follow this and additional works at: <https://scholarworks.wmich.edu/pure>



Part of the Geology Commons

WMU ScholarWorks Citation

MGRRE, "MGRRE_PureOilScoutTickets_WAGNER, CHARLES W._1_21057081670000" (2021). *Legacy Scout Tickets from Pure Oil Company*. 2587.
<https://scholarworks.wmich.edu/pure/2587>

This Document is brought to you for free and open access via ScholarWorks at WMU. It has been accepted for inclusion in Legacy Scout Tickets from Pure Oil Company by an authorized administrator of ScholarWorks at WMU. See the National Digital Catalogue - Science Base Catalogue for more collections submitted by MGRRE.



MGRRE_PureOilScoutTickets_WAGNER, CHARLES W._1_21057081670000

API 21057081670000

Permit Number 8167

Lease Name WAGNER, CHARLES W.

Well Number 1

County Gratiot

Township 9N

Range 4W

Section 2

2021 DEQ or Pure co_name CHARTIERS OIL CO

Pure Number 191

Latitude 43.19713

Longitude -84.74953

THE PURE OIL COMPANY

DATE October 30, 1940

LOCATION REPORT

No.

STATE Michigan

COUNTY Gratiot

DIST. North Shade
TWP. North Shade
PREC. Charles W. Wagner

SEC. 2

TOWN 9 N

RANGE 4 W

ACRES

WELL No. 1 (SERIAL No. 191) FARM

QUADRANGLE NE NE SW

NAME OF STREAM OR WATERS

OPERATOR Chartiers Oil Company

Map North Shade Township, Gratiot County

Chartiers Oil Co
Feet from North Line of Farm

330 330 " " East " " "

990 990 " " South " " "

" " West " " "

330 330 Feet from North Line of Section 1/44

330 330 " " East " " "

" " South " " "

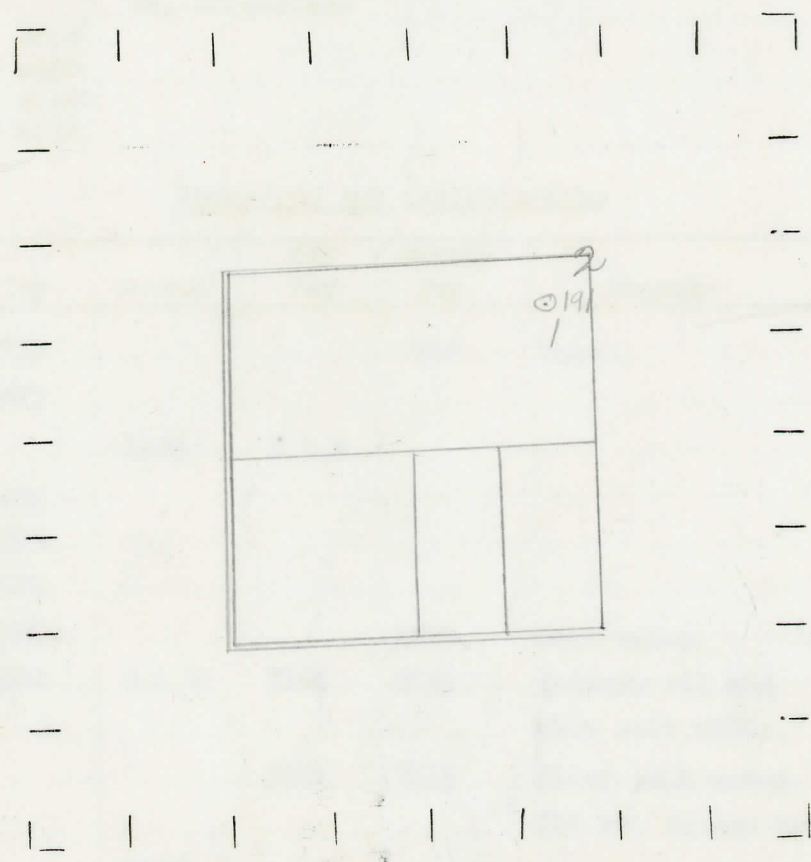
" " West " " "

LEGEND

- LOCATION
- ⊕ RIG
- ⊕ DRILLING
- ☀ GAS WELL
- OIL WELL
- SMALL OIL WELL

- ⊕ DRY HOLE
- DRY SHOWING OIL
- ☀ DRY SHOWING GAS
- ⊕ ABANDONED LOCATION
- ☀ ABANDONED GAS WELL
- ABANDONED OIL WELL

NOTE: Below make tracing from map. (when no map is obtainable make sketch) showing farm, center of section, this location with measurements and also wells, dry holes, or other locations in the vicinity of this location.



REMARKS:

SIGNED

W

Superintendent or Foreman.

Michigan Producing Division

Date December 11, 1940 No. 191
 State Mich. County Gratiot Dist. North Shade Twp. 9 N Rge. 4 W
 Well No. 1 (Serial No.) 191 Farm Charles W. Wagner Acres _____
 Operator Chartiers Oil Company Information secured from Scouting Department
 Date well started 10-31-40 Dated well completed 12-7-40 Elevation 748.5

PRODUCTION RECORD

1st 24 hours natural Dry Hole
 2nd 24 hours natural _____
 Date of shot _____ No. of quarts _____ From _____ to _____
 Date of acid _____ No. of gallons _____
 1st 24 hours after acid shot _____
 2nd 24 hours after acid shot _____

FORMATION AND CASING RECORD

Formation	Top	Bottom	Top Pay	Bottom Pay	Remarks	Casing	
						Size	Set at
Stray	933			948	Water.	10"	341
Marshall	1023					8-1/4"	777
Red Rock		1186	S.L.M.			6-5/8"	1278
Sunbury	2284					5-3/16"	3185
Berea	2300						
Antrim	2320						
Traverse Lime	2706			2820	Salt water.		
Dundee	3182	S.L.M.	3182	3185	Rainbow oil and show salt water.		
			3214	3215	Black salt water-700 ft. in one hr.		
Total Depth		3215					

Remarks 1184' C.T.M. equals 1186' S.L.M.

Signed D. C. Shackelford