



Western Michigan University
ScholarWorks at WMU

Legacy Scout Tickets from Pure Oil Company

8-20-2021

MGRRE_PureOilScoutTickets_BOYD, GUY C._1_21057082050000

MGRRE

Western Michigan University

Follow this and additional works at: <https://scholarworks.wmich.edu/pure>



Part of the Geology Commons

WMU ScholarWorks Citation

MGRRE, "MGRRE_PureOilScoutTickets_BOYD, GUY C._1_21057082050000" (2021). *Legacy Scout Tickets from Pure Oil Company*. 2588.

<https://scholarworks.wmich.edu/pure/2588>

This Document is brought to you for free and open access via ScholarWorks at WMU. It has been accepted for inclusion in Legacy Scout Tickets from Pure Oil Company by an authorized administrator of ScholarWorks at WMU. See the National Digital Catalogue - Science Base Catalogue for more collections submitted by MGRRE.



MGRRE_PureOilScoutTickets_BOYD, GUY C._1_21057082050000

API 21057082050000

Permit Number 8205

Lease Name BOYD, GUY C.

Well Number 1

County Gratiot

Township 10N

Range 2W

Section 4

2021 DEQ or Pure co_name WILSON VIC R AND TWIN DRILLING CO

Pure Number 192

Latitude 43.2879

Longitude -84.55823

THE PURE OIL COMPANY

DATE November 20, 1940

LOCATION REPORT

No. 192

STATE Michigan

COUNTY Gratiot

DIST North Star

TWP North Star

SEC 4

TOWN 10 N

RANGE 2 W

WELL No. 1 (SERIAL No. 192) FARM

PREC Guy C. Boyd

ACRES

NAME OF STREAM OR WATERS

QUADRANGLE Approx. C NW

OPERATOR Vic R. Wilson & Twin Drilling Co.

Map

North Star Township, Gratiot County

Vic R. Wilson - Twin Drilg Co

North Star - Gratiot

Feet from North Line of Farm

1320 1320 " " East " " "

1300 1300 " " South " " "

1320 1320 " " West " " "

Feet from North Line of Section

1320 1320 " " East " 1/4 "

1330 1330 " " South " " "

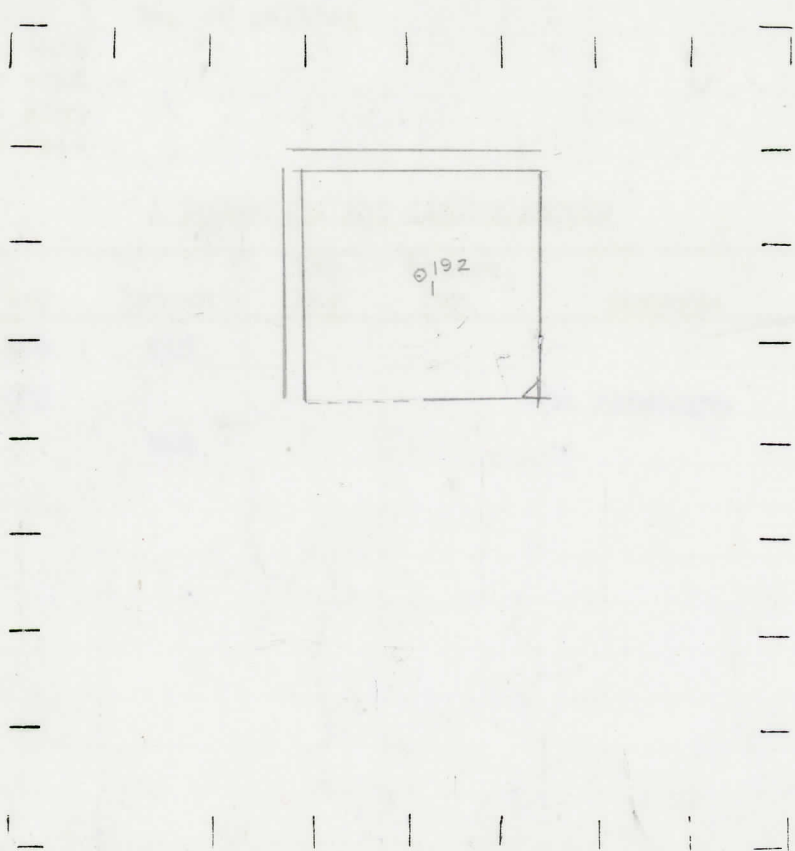
1320 1320 " " West " " "

See sample - D.N.

LEGEND

- LOCATION
- ⊕ RIG
- ⊕ DRILLING
- ☀ GAS WELL
- OIL WELL
- SMALL OIL WELL
- ⊙ DRY HOLE
- DRY SHOWING OIL
- ⊙ DRY SHOWING GAS
- ⊙ ABANDONED LOCATION
- ☀ ABANDONED GAS WELL
- ABANDONED OIL WELL

NOTE: Below make tracing from map. (when no map is obtainable make sketch) showing farm. center of section, this location with measurements and also wells, dry holes, or other locations in the vicinity of this location.



REMARKS:

.....
.....
.....

SIGNED

W

Superintendent or Foreman.

Michigan Producing Division

Date **November 20, 1940** No. **192**
 State **Mich.** County **Gratiot** Dist. **x North Star** Sec. **4** Twp. **10 N** Rge. **2 W**
 Well No. **1** (Serial No.) **192** Farm **Guy C. Boyd** Acres _____
 Operator **Vic R. Wilson-Twin Drilg. Co.** Information secured ~~from~~ **By Scouting Department**
 Date well started **11-8-40** Dated well completed **11-18-40** Elevation **733.5**

PRODUCTION RECORD

1st 24 hours natural **Dry Hole**
 2nd 24 hours natural _____
 Date of shot _____ No. of quarts _____ From _____ to _____ From _____ to _____
 Date of acid _____ No. of gallons _____
 shot _____
 1st 24 hours after acid _____
 shot _____
 2nd 24 hours after acid _____

FORMATION AND CASING RECORD

Formation	Top	Bottom	Top Pay	Bottom Pay	Remarks	Casing	
						Size	Set at
Stray	896	915					
Marshall	922				No showings.		
Total Depth		928					

Remarks _____

Signed **D. C. Shackelford**