



Western Michigan University
ScholarWorks at WMU

Legacy Scout Tickets from Pure Oil Company

8-20-2021

**MGRRE_PureOilScoutTickets_PROBST, WILL
COMM_1_21057082920000**

MGRRE
Western Michigan University

Follow this and additional works at: <https://scholarworks.wmich.edu/pure>



Part of the Geology Commons

WMU ScholarWorks Citation

MGRRE, "MGRRE_PureOilScoutTickets_PROBST, WILL COMM_1_21057082920000" (2021). *Legacy Scout Tickets from Pure Oil Company*. 2589.

<https://scholarworks.wmich.edu/pure/2589>

This Document is brought to you for free and open access via ScholarWorks at WMU. It has been accepted for inclusion in Legacy Scout Tickets from Pure Oil Company by an authorized administrator of ScholarWorks at WMU. See the National Digital Catalogue - Science Base Catalogue for more collections submitted by MGRRE.



MGRRE_PureOilScoutTickets_PROBST, WILL COMM_1_21057082920000

API 21057082920000

Permit Number 8292

Lease Name PROBST, WILL COMM

Well Number 1

County Gratiot

Township 10N

Range 2W

Section 4

2021 DEQ or Pure co_name WILSON VIC R

Pure Number 193

Latitude 43.27977

Longitude -84.54468

DATE December 18, 1940

LOCATION REPORT

No. 193

STATE Michigan COUNTY Gratiot DIST North Star TWP North Star SEC 4 TOWN 100W RANGE 2W
WELL No. 11 (SERIAL No. 193) FARM Will Probst (Comm. & Comm) ACRES

NAME OF STREAM OR WATERS QUADRANGLE NE SE SE

OPERATOR Vic R. Wilson Map North Star Township, Gratiot County
Vic. R. Wilson North Star - Gratiot

Feet from North Line of Farm

990 990 " " East " " "

990 990 " " South " " "

Feet from North Line of Section

330 330 " " East " 1/4 "

990 990 " " South " " "

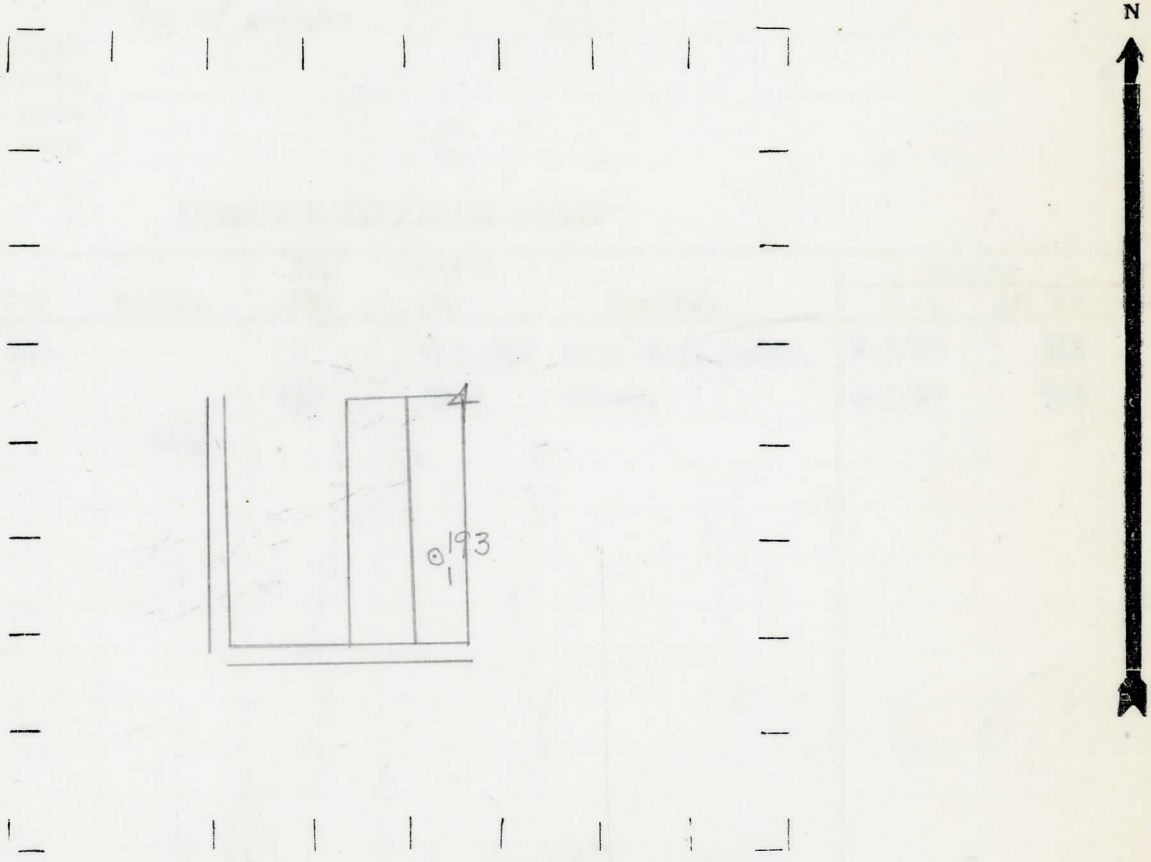
" " West " " "

Sp 12-16-40

- LOCATION
- ⊕ RIG
- ⊕ DRILLING
- ☀ GAS WELL
- OIL WELL
- SMALL OIL WELL

- LEGEND
- ⊙ DRY HOLE
 - DRY SHOWING OIL
 - ☀ DRY SHOWING GAS
 - ⊙ ABANDONED LOCATION
 - ☀ ABANDONED GAS WELL
 - ABANDONED OIL WELL

NOTE: Below make tracing from map. (when no map is obtainable make sketch) showing farm, center of section, this location with measurements and also wells, dry holes, or other locations in the vicinity of this location.



REMARKS:

SIGNED _____
Superintendent or Foreman.

