



Western Michigan University
ScholarWorks at WMU

Legacy Scout Tickets from Pure Oil Company

8-20-2021

**MGRRE_PureOilScoutTickets_DOUGLAS, ARNER M
COMM_1_21057083610000**

MGRRE
Western Michigan University

Follow this and additional works at: <https://scholarworks.wmich.edu/pure>



Part of the Geology Commons

WMU ScholarWorks Citation

MGRRE, "MGRRE_PureOilScoutTickets_DOUGLAS, ARNER M COMM_1_21057083610000" (2021). *Legacy Scout Tickets from Pure Oil Company*. 2590.
<https://scholarworks.wmich.edu/pure/2590>

This Document is brought to you for free and open access via ScholarWorks at WMU. It has been accepted for inclusion in Legacy Scout Tickets from Pure Oil Company by an authorized administrator of ScholarWorks at WMU. See the National Digital Catalogue - Science Base Catalogue for more collections submitted by MGRRE.



MGRRE_PureOilScoutTickets_DOUGLAS, ARNER M COMM_1_21057083610000

API 21057083610000

Permit Number 8361

Lease Name DOUGLAS, ARNER M COMM

Well Number 1

County Gratiot

Township 11N

Range 2W

Section 33

2021 DEQ or Pure co_name WILSON VIC R

Pure Number 194

Latitude 43.29436

Longitude -84.54934

DATE January 22, 1941

LOCATION REPORT

No. 194

STATE Michigan

COUNTY Gratiot

DISTRICT EMERSON

TWP Emerson

SEC. 33

TOWN 11^N

RANGE 3^W

WELL No. 1 (SERIAL No. 194) FARM

PREC. Arner M. Douglas (Comm.)

ACRES

NAME OF STREAM OR WATERS

QUADRANGLE NE 1/4 SE SE

OPERATOR Vic R. Wilson

Map

Emerson Township, Gratiot County

Vic R. Wilson

Emerson - Gratiot

Feet from North Line of Farm

.....	"	"	East	"	"	"
<u>990</u>	<u>990</u>	"	South	"	"	"
<u>990</u>	<u>990</u>	"	West	"	"	"

*Sp 73
Sp 1-17-41*

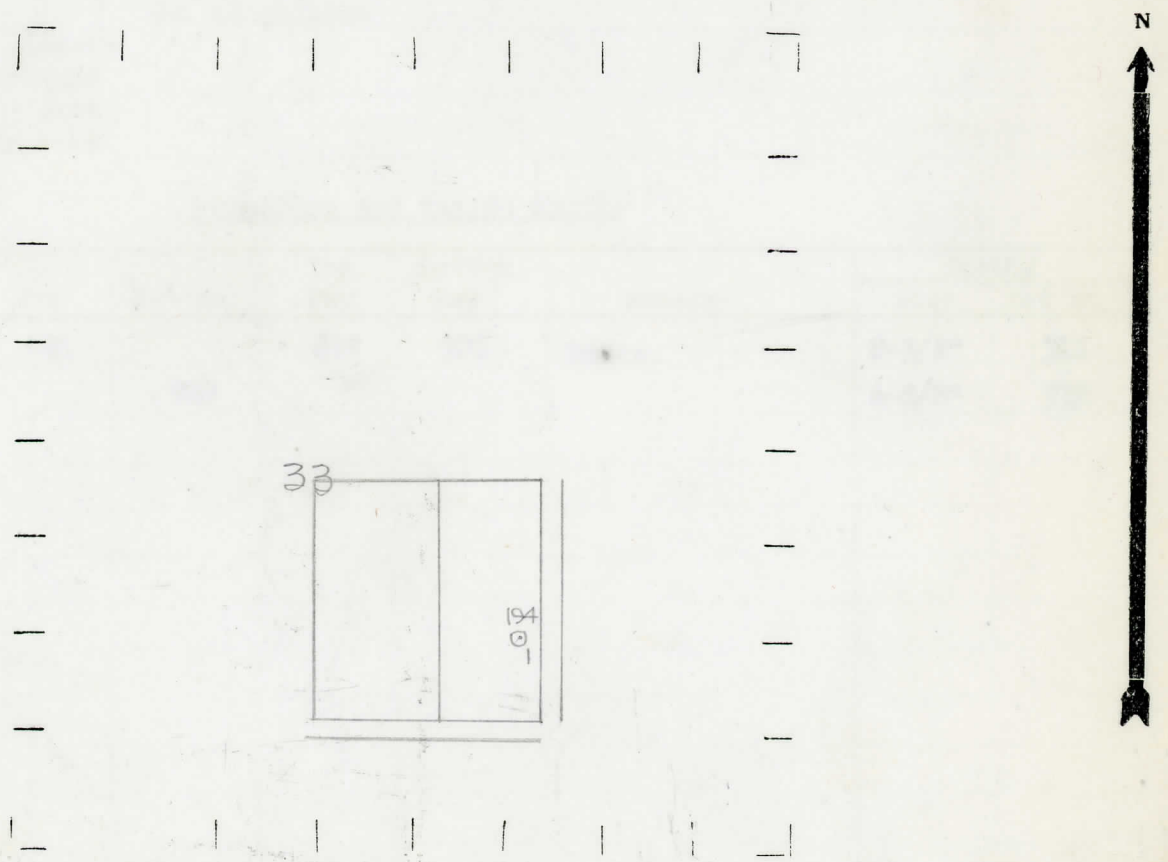
Feet from North Line of Section

<u>330</u>	<u>330</u>	"	East	"	<u>1/4</u>	"
<u>990</u>	<u>990</u>	"	South	"	"	"
.....	"	West	"	"	"

LEGEND

- LOCATION
- ⊕ RIG
- ⊕ DRILLING
- ☀ GAS WELL
- OIL WELL
- ⬇ SMALL OIL WELL
- ⊖ DRY HOLE
- ⬆ DRY SHOWING OIL
- ⊖ DRY SHOWING GAS
- ⊖ ABANDONED LOCATION
- ☀ ABANDONED GAS WELL
- ⬆ ABANDONED OIL WELL

NOTE: Below make tracing from map. (when no map is obtainable make sketch) showing farm, center of section, this location with measurements and also wells, dry holes, or other locations in the vicinity of this location.



REMARKS:

SIGNED

W
Superintendent or Foreman.

