



Western Michigan University
ScholarWorks at WMU

Legacy Scout Tickets from Pure Oil Company

8-20-2021

**MGRRE_PureOilScoutTickets_GRUBAUGH, ROSA L. & GEORGE
W._1_21057084970000**

MGRRE
Western Michigan University

Follow this and additional works at: <https://scholarworks.wmich.edu/pure>



Part of the Geology Commons

WMU ScholarWorks Citation

MGRRE, "MGRRE_PureOilScoutTickets_GRUBAUGH, ROSA L. & GEORGE W._1_21057084970000" (2021).
Legacy Scout Tickets from Pure Oil Company. 2594.
<https://scholarworks.wmich.edu/pure/2594>

This Document is brought to you for free and open access via ScholarWorks at WMU. It has been accepted for inclusion in Legacy Scout Tickets from Pure Oil Company by an authorized administrator of ScholarWorks at WMU. See the National Digital Catalogue - Science Base Catalogue for more collections submitted by MGRRE.



**MGRRE_PureOilScoutTickets_GRUBAUGH, ROSA L. & GEORGE
W._1_21057084970000**

API 21057084970000

Permit Number 8497

Lease Name GRUBAUGH, ROSA L. & GEORGE W.

Well Number 1

County Gratiot

Township 11N

Range 3W

Section 6

2021 DEQ or Pure co_name CHARTIERS OIL CO

Pure Number 198

Latitude 43.36551

Longitude -84.71468

THE PURE OIL COMPANY

LOCATION REPORT

No. 198

DATE March 26, 1941

STATE Michigan

COUNTY

Gratiot

DIST. Arcada
TWP. Arcada
PREC. Rosa L. and Geo. W. Grubaugh

SEC. 66

TOWN 11N

RANGE 3W

WELL No. 1 (SERIAL No. 198) FARM

ACRES

NAME OF STREAM OR WATERS

QUADRANGLE SW SW SE

OPERATOR The Chartiers Oil Company

Map Arcada Township, Gratiot County

Feet from North Line of Farm

330 330 " " East " " "

330 330 " " South " " "

330 330 " " West " " "

Feet from North Line of Section

330 330 " " East " " "

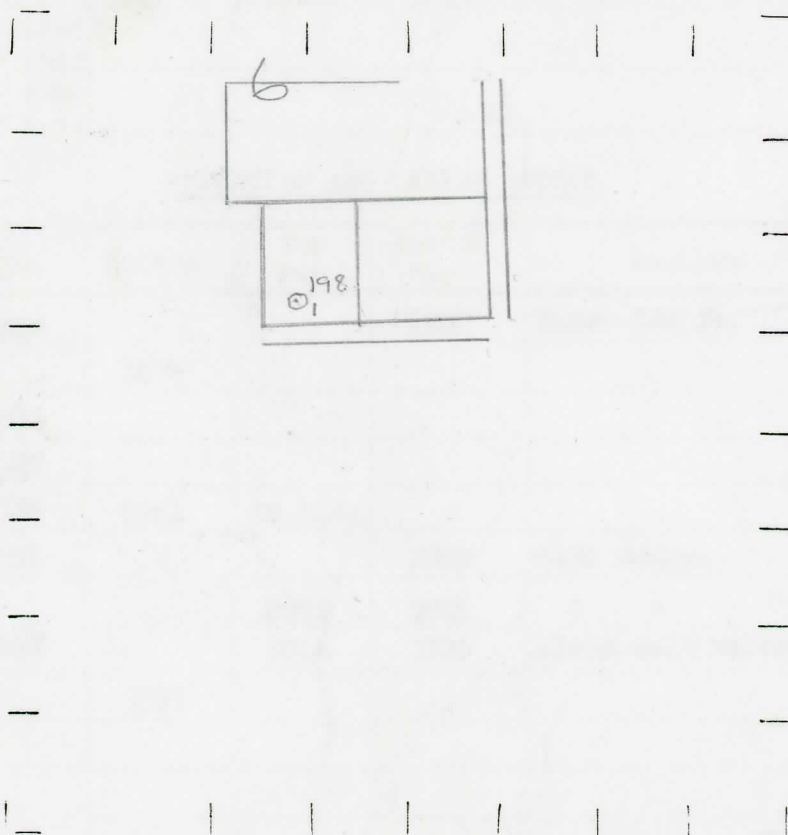
330 330 " " South " 1/4 "

330 330 " " West " " "

LEGEND

- LOCATION
- ⊕ RIG
- ⊕ DRILLING
- ☀ GAS WELL
- OIL WELL
- SMALL OIL WELL
- ⊙ DRY HOLE
- ◆ DRY SHOWING OIL
- ⊙ DRY SHOWING GAS
- ⊙ ABANDONED LOCATION
- ☀ ABANDONED GAS WELL
- ABANDONED OIL WELL

NOTE: Below make tracing from map. (when no map is obtainable make sketch) showing farm, center of section, this location with measurements and also wells, dry holes, or other locations in the vicinity of this location.



REMARKS:

SIGNED

w

Superintendent or Foreman.

Date May 7, 1941 No. 198
 State Mich. County Gratiot Twp. Arcada Sec. 6 Twp. 11 N Rge. 3 W
 Well No. 1 (Serial No.) 198 Farm Geo. W. Grubaugh Acres _____
 Operator The Charterers Oil Company Information secured from Scouting Department
 Date well started 3-28-41 Date well completed 5-6-41 Elevation 761.5

PRODUCTION RECORD

1st 24 hours natural Dry Hole
 2nd 24 hours natural _____
 Date of shot _____ No. of quarts _____ From _____ to _____ From _____ to _____
 Date of acid _____ No. of gallons _____
 1st 24 hours after acid shot _____
 2nd 24 hours after acid shot _____

FORMATION AND CASING RECORD

Formation	Top	Bottom	Top Pay	Bottom Pay	Remarks	Casing	
						Size	Set at
Marshall	1025			1025	Water-500 ft.	10"	391
Red Rock		1299				8-1/4"	779
Sunbury	2302					6-5/8"	1306
Berea	2328					5-3/16"	3299
Antrim	2358	2761	S.L.M.				
Traverse Lime	2775			2902	Salt water.		
			2972	2991	" "		
Dundee	3297		3316	3335	Black salt water.		
Total Depth		3335					

Remarks 1307' C.T.M. equals 1306' S.L.M.; 2800 C.T.M. equals 2800' S.L.M.

Signed D. C. Shackelford