



Western Michigan University  
ScholarWorks at WMU

---

Legacy Scout Tickets from Pure Oil Company

---

8-20-2021

**MGRRE\_PureOilScoutTickets\_DICKINSON, GEORGE  
A\_1\_21057085270000**

MGRRE  
*Western Michigan University*

Follow this and additional works at: <https://scholarworks.wmich.edu/pure>



Part of the Geology Commons

---

#### WMU ScholarWorks Citation

MGRRE, "MGRRE\_PureOilScoutTickets\_DICKINSON, GEORGE A\_1\_21057085270000" (2021). *Legacy Scout Tickets from Pure Oil Company*. 2596.  
<https://scholarworks.wmich.edu/pure/2596>

This Document is brought to you for free and open access via ScholarWorks at WMU. It has been accepted for inclusion in Legacy Scout Tickets from Pure Oil Company by an authorized administrator of ScholarWorks at WMU. See the National Digital Catalogue - Science Base Catalogue for more collections submitted by MGRRE.



---

**MGRRE\_PureOilScoutTickets\_DICKINSON, GEORGE A\_1\_21057085270000**

API 21057085270000

Permit Number 8527

Lease Name DICKINSON, GEORGE A

Well Number 1

County Gratiot

Township 10N

Range 4W

Section 6

2021 DEQ or Pure co\_name D T E GAS COMPANY

Pure Number 200

Latitude 43.28166

Longitude -84.8217

DATE April 9, 1941

The LOCATION REPORT

No. 200

COMPLETION RECORD OF WELLS DRILLED BY OTHER OPERATORS

STATE Michigan COUNTY Gratiot DIST. TWP. New Haven SEC. 6 TOWN 10 N RANGE 4 W  
WELL No. 1 (SERIAL No. 200) FARM Geo. A. Dickinson ACRES

NAME OF STREAM OR WATERS QUADRANGLE C SE-

OPERATOR W. E. Ross Map New Haven Township, Gratiot County

*W. E. Ross*

*New Haven - Gratiot*

Feet from North Line of Farm

1320 1320 " " East " " "

1320 1320 " " South " " "

" " West " " "

Feet from North Line of Section

1320 1320 " " East " 1/4 "

1320 1320 " " South " " "

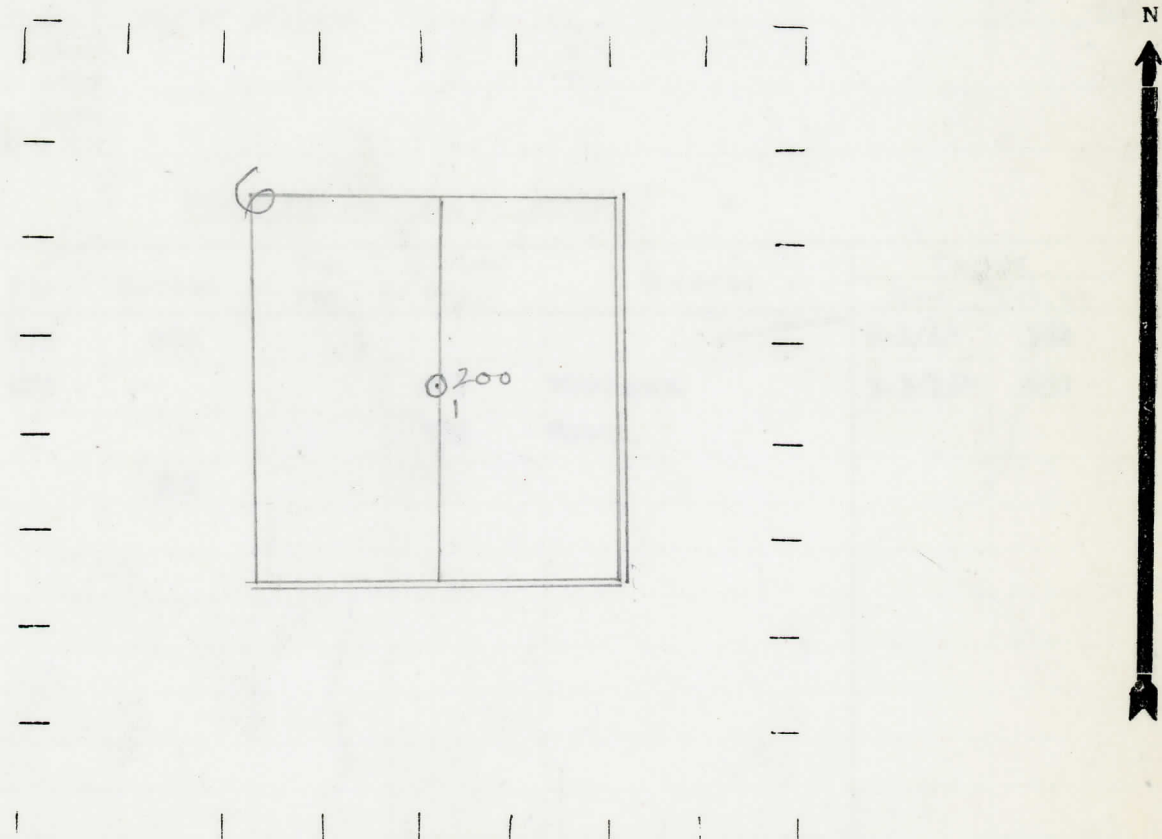
" " West " " "

*Low*

LEGEND

- LOCATION
- ⊕ RIG
- ⊕ DRILLING
- ☀ GAS WELL
- OIL WELL
- SMALL OIL WELL
- ⊙ DRY HOLE
- DRY SHOWING OIL
- ☀ DRY SHOWING GAS
- ⊙ ABANDONED LOCATION
- ☀ ABANDONED GAS WELL
- ABANDONED OIL WELL

NOTE: Below make tracing from map. (when no map is obtainable make sketch) showing farm, center of section, this location with measurements and also wells, dry holes, or other locations in the vicinity of this location.



REMARKS:

SIGNED

*W*

Superintendent or Foreman.

