



Legacy Scout Tickets from Pure Oil Company

8-20-2021

**MGRRE_PureOilScoutTickets_ANDERSON,
EMILY_1_21057094140000**

MGRRE

Western Michigan University

Follow this and additional works at: <https://scholarworks.wmich.edu/pure>



Part of the Geology Commons

WMU ScholarWorks Citation

MGRRE, "MGRRE_PureOilScoutTickets_ANDERSON, EMILY_1_21057094140000" (2021). *Legacy Scout Tickets from Pure Oil Company*. 2601.

<https://scholarworks.wmich.edu/pure/2601>

This Document is brought to you for free and open access via ScholarWorks at WMU. It has been accepted for inclusion in Legacy Scout Tickets from Pure Oil Company by an authorized administrator of ScholarWorks at WMU. See the National Digital Catalogue - Science Base Catalogue for more collections submitted by MGRRE.



MGRRE_PureOilScoutTickets_ANDERSON, EMILY_1_21057094140000

API 21057094140000

Permit Number 9414

Lease Name ANDERSON, EMILY

Well Number 1

County Gratiot

Township 12N

Range 3W

Section 31

2021 DEQ or Pure co_name CHARTIERS OIL CO

Pure Number 206

Latitude 43.38373

Longitude -84.71779

THE PURE OIL COMPANY LOCATION REPORT

Serial No. 206 ²⁰⁶

Date February 4, 1942

A.F.E. No. _____

Division Mich. Producing

District _____

Division Michigan Producing

Lease _____

Emily Anderson

Acres _____ Lease No. _____

Elevation _____

Well No. 1

Quadrangle SE NE SW

Lot _____

Sec. 3B1

Twp. 12-W

Rge. 3W

Blkx
Dist.

Pine River

Survey _____ County Gratiot

State Michigan

Operator The Charliers Oil Company Co

Map Pine River Township, Gratiot County

Feet North of South Line of Lease

<u>990</u>	<u>990</u>	"	East	"	West	"	"	"
<u>990</u>	<u>990</u>	"	South	"	North	"	"	"
		"	West	"	East	"	"	"

Feet North of South Line of Section

<u>990</u>	<u>990</u>	"	East	"	West	"	"	"
<u>330</u>	<u>330</u>	"	South	"	North	"	<u>1/4</u>	"
		"	West	"	East	"	"	"

LEGEND

○ Location

☀ Gas Well

● Oil Well

○ or ○ Dry Hole

● or ● Dry Showing Oil

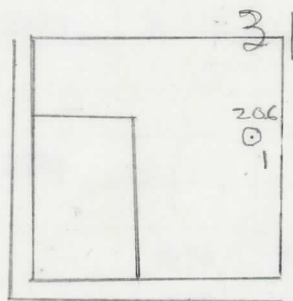
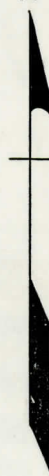
☀ Dry Showing Gas

⊗ Abandoned Location

☀ or ☀ Abandoned Gas Well

● or ● Abandoned Oil Well

N



Scale _____

Remarks: _____

Submitted by _____

W

Civil Engineer

Approved by _____

Division Manager

Approved by _____

Vice-President - General Manager

Date April 8, 1942 No. 206
 State Mich. County Gratiot Dist. Pine River
 (Serial No.) Twp. 12 N Rge. 3 W
 Well No. 1 (County No.) 206 Farm Emily Anderson Acres
 Operator The Chartiers Oil Company Information secured From Scouting Department
 Date well started 2-17-42 Date well completed 3-31-42 Elevation 753.1

PRODUCTION RECORD

1st 24 hours natural Dry Hole
 2nd 24 hours natural
 Date of shot No. of quarts From to From to
 Date of acid No. of gallons
 1st 24 hours after acid shot
 2nd 24 hours after acid shot

FORMATION AND CASING RECORD

Formation	Top	Bottom	Top Pay	Bottom Pay	Remarks	Casing	
						Size	Set at
Brown Dolomite	934	946	SLM & (Sample)			10"	369
Stray	985	991				8-1/4"	715
Marshall	1013	(Sample)			H.F.W. at 1030'.	6-5/8"	1309
Red Rock	1100	1275	S.L.M.			5-3/16"	3433
Sunbury	2300						
Berea	2325						
Antrim	2350	2758					
Traverse	2763				2 ballers salt water per hour at 2900'.		
Dundee (Dol.)	3276		3276	3282	Very small show oil.		
			3287	3289	H.F.S.W.		
			3299	3304	Salt water.		
				3309	Salt water.		
				3450	H.F.Black salt water in one hour.		
Total Depth		3450					

Remarks 730' CTM equals 733' SOM; 945' CTM equals 947' SLM.

Signed D. C. Shackelford