



Western Michigan University
ScholarWorks at WMU

Legacy Scout Tickets from Pure Oil Company

8-20-2021

**MGRRE_PureOilScoutTickets_HALE, OLIVE M. ET
AL_1_21057099290000**

MGRRE
Western Michigan University

Follow this and additional works at: <https://scholarworks.wmich.edu/pure>



Part of the Geology Commons

WMU ScholarWorks Citation

MGRRE, "MGRRE_PureOilScoutTickets_HALE, OLIVE M. ET AL_1_21057099290000" (2021). *Legacy Scout Tickets from Pure Oil Company*. 2611.
<https://scholarworks.wmich.edu/pure/2611>

This Document is brought to you for free and open access via ScholarWorks at WMU. It has been accepted for inclusion in Legacy Scout Tickets from Pure Oil Company by an authorized administrator of ScholarWorks at WMU. See the National Digital Catalogue - Science Base Catalogue for more collections submitted by MGRRE.



MGRRE_PureOilScoutTickets_HALE, OLIVE M. ET AL_1_21057099290000

API 21057099290000

Permit Number 9929

Lease Name HALE, OLIVE M. ET AL

Well Number 1

County Gratiot

Township 11N

Range 4W

Section 35

2021 DEQ or Pure co_name CHARTIERS OIL CO

Pure Number 216

Latitude 43.30388

Longitude -84.75509

THE PURE OIL COMPANY

LOCATION REPORT

Date 12-23-42 A.F.E. No. _____

Division Mich. Producing District _____ Lease Olive M. Hale, et al

Acres _____ Lease No. _____ Elevation _____ Well No. 1 (Serial No. 216)

Quadrangle SW NW NE Sec. 35 Twp. 11 N Rge. 4 W Twp. Summer

Survey _____ County Gratiot State Michigan

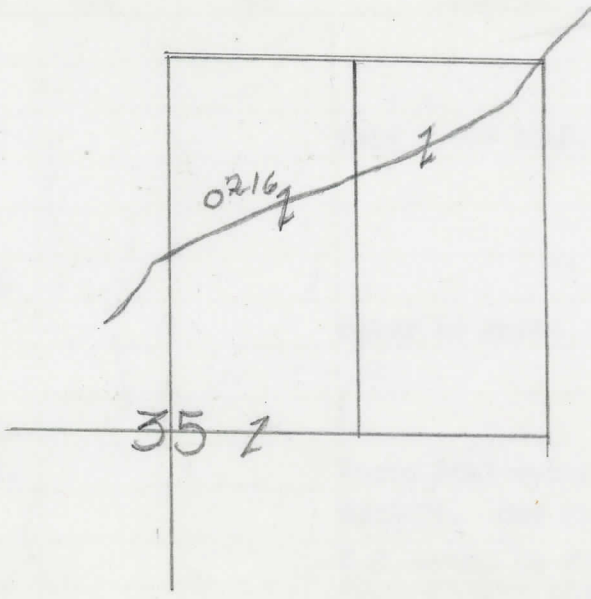
Operator Chartiers Oil Co Map Gratiot Co - Summer Twp

<u>2310</u>	<u>2310</u>	Feet from North Line of Lease
		" " East " " "
		" " South " " "
<u>330</u>	<u>330</u>	Feet from North Line of Section
<u>990</u>	<u>990</u>	" " East " " "
		" " South " " "
<u>330</u>	<u>330</u>	" " West " " "

min

LEGEND

- Location
- ☀ Gas Well
- Oil Well
- ☀ or ☀ Gas - Distillate Well
- or ○ Dry Hole
- or ● Dry Showing Oil
- ☀ Dry Showing Gas
- ⊗ Abandoned Location
- ☀ or ☀ Abandoned Gas Well
- or ● Abandoned Oil Well
- or ○ Input Well



Scale _____

Remarks: _____

Submitted by A Civil Engineer Approved by _____ Division Manager

Approved by _____ Vice-President - General Manager

COMPLETION RECORD OF WELLS DRILLED BY OTHER OPERATORS

Michigan Producing Division

Date March 10, 1943 No. 216
 State Mich. County Gratiot Twp. Sumner Sec. 35 Twp. 11 N Rge. 4 W
 Well No. 1 (Serial No.) 216 Farm O.M. Hale, et al Acres _____
 Operator The Chartiers Oil Company Information secured from Scouting Department
 Date well started 1-27-43 Date well completed 3-7-43 Elevation 756.2

PRODUCTION RECORD

1st 24 hours natural Dry Hole
 2nd 24 hours natural _____
 Date of shot _____ No. of quarts _____ From _____ to _____ From _____ to _____
 Date of acid _____ No. of gallons _____
 1st 24 hours after acid shot _____
 2nd 24 hours after acid shot _____

FORMATION AND CASING RECORD

Formation	Top	Bottom	Top Pay	Bottom Pay	Remarks	Casing	
						Size	Set at
Brown Dolomite	919	933				10"	365
Mich. Stray	971	983				8-1/4"	776
Marshall	995				Salt water 1010.	6-5/8"	1275
Red Rock	1033 log	1215				5-3/16"	3210
" "	1240	1260					
Sunbury	2273	S.O.M.					
Berea	2308	"			Water in Berea		
Antrim	2324	2718					
Traverse Lime	2733	S.O.M.					
Dundee	3209	S.L.M.			Taste salt water 3233-34. 600 ft. B.S. water in 20 minutes from 3253 to 3254.		
Total Depth		3254					

Remarks 877' CTM equals 874' SOM; 1222' CTM equals 1222' SLM; 2353' CTM equals 2348' SOM.

Signed D. C. Shackelford