



Western Michigan University  
ScholarWorks at WMU

---

Legacy Scout Tickets from Pure Oil Company

---

8-20-2021

**MGRRE\_PureOilScoutTickets\_BERTHA, HART, HICKS ET  
AL\_1\_21057101930000**

MGRRE

*Western Michigan University*

Follow this and additional works at: <https://scholarworks.wmich.edu/pure>



Part of the Geology Commons

---

#### **WMU ScholarWorks Citation**

MGRRE, "MGRRE\_PureOilScoutTickets\_BERTHA, HART, HICKS ET AL\_1\_21057101930000" (2021). *Legacy Scout Tickets from Pure Oil Company*. 2613.  
<https://scholarworks.wmich.edu/pure/2613>

This Document is brought to you for free and open access via ScholarWorks at WMU. It has been accepted for inclusion in Legacy Scout Tickets from Pure Oil Company by an authorized administrator of ScholarWorks at WMU. See the National Digital Catalogue - Science Base Catalogue for more collections submitted by MGRRE.



---

**MGRRE\_PureOilScoutTickets\_BERTHA, HART, HICKS ET AL\_1\_21057101930000**

API 21057101930000

Permit Number 10193

Lease Name BERTHA, HART, HICKS ET AL

Well Number 1

County Gratiot

Township 12N

Range 4W

Section 5

2021 DEQ or Pure co\_name FREEMAN OIL CO

Pure Number 218

Latitude 43.45275

Longitude -84.80933

# THE PURE OIL COMPANY LOCATION REPORT

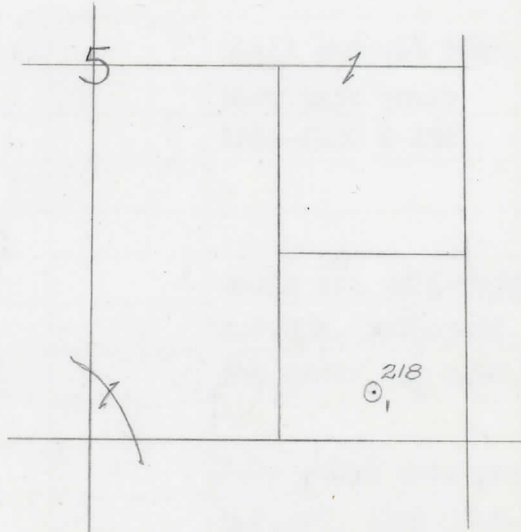
Date June 30, 1943 A.F.E. No. \_\_\_\_\_  
 Division Michigan Producing District \_\_\_\_\_ Lease Bertha, Hart, Hicks, et al  
 Acres \_\_\_\_\_ Lease No. \_\_\_\_\_ Elevation \_\_\_\_\_ Well No. 1 (Serial No. 218)  
 Quadrangle C S 1/2 SE SE Sec. 5 Twp. 12 N Rge. 4 W Twp. Seville  
 Survey \_\_\_\_\_ County Gratiot State Michigan  
 Operator Freeman Oil Company Map Seville Twp - Gratiot Co.

Feet from North Line of Lease	
<u>660</u>	<u>660</u>
" "	East " " "
<u>330</u>	<u>330</u>
" "	South " " "
" "	West " " "
Feet from North Line of Section	
<u>660</u>	<u>660</u>
" "	East " <u>1/4</u> "
<u>330</u>	<u>330</u>
" "	South " " "
" "	West " " "

### LEGEND

- Location
- ☉ Gas Well
- Oil Well
- ☉ Gas - Distillate Well
- ⊙ or ○ Dry Hole
- Dry Showing Oil
- ☉ Dry Showing Gas
- ⊙ Abandoned Location
- ☉ or ⊙ Abandoned Gas Well
- or ● Abandoned Oil Well
- ⊙ or ○ Input Well

N



Scale \_\_\_\_\_

Remarks: \_\_\_\_\_  
 \_\_\_\_\_  
 \_\_\_\_\_

Submitted by \_\_\_\_\_  
 Civil Engineer

Approved by \_\_\_\_\_  
 Division Manager

Approved by \_\_\_\_\_  
 Vice-President - General Manager

Michigan Producing Division

Date September 15, 1943 No. 218  
 State Mich. County Gratiot ~~Dist.~~ Twp. Seville Sec. 5 Twp. 12 N Rge. 4 W  
 Well No. 1 (Serial No.) 218 Farm Bertha, Hart, Hicks, et al Acres \_\_\_\_\_  
 Operator Freeman Oil Company Information secured ~~from~~ Scouting Department  
 Date well started 7-5-43 Date well completed 9-13-43 Elevation 820.7

PRODUCTION RECORD

1st 24 hours natural Dry Hole  
 2nd 24 hours natural \_\_\_\_\_  
 Date of shot \_\_\_\_\_ No. of quarts \_\_\_\_\_ From \_\_\_\_\_ to \_\_\_\_\_ From \_\_\_\_\_ to \_\_\_\_\_  
 Date of acid \_\_\_\_\_ No. of gallons \_\_\_\_\_  
 1st 24 hours after acid shot \_\_\_\_\_  
 2nd 24 hours after acid shot \_\_\_\_\_

FORMATION AND CASING RECORD

Formation	Top	Bottom	Top Pay	Bottom Pay	Remarks	Casing	
						Size	Set at
Brown Dolomite	1166	S.L.M.				10"	470
Mich. Stray	1222	"			Small sho oil 1225.	8-1/4"	943
Marshall	1253	1500			Show salt water 1256-1266 & 1287.	6-5/8"	1519
						5-3/16"	3533
Sunbury	2512	C.T.M.					
Berea	2537	"					
Antrim	2565	S.L.M.			Smell oil 3013-3029.		
Traverse Line	2972	"			H.F.S.W. 3075-3092. Sho green oil 3092.		
Dundee (Line)	3525	S.L.M.					
Dundee (Dol.)	3529				Very small show gas 3537. H.F.S.W. 3546-3548.		
Total Depth		3617			Quest. Salt water 3588 & 3607 to 3617.		

Remarks 1255' CTM eq. 1256' SLM; 2568' CTM eq. 2578' SLM; 2998' CTM eq. 3001' SLM; 3523' CTM eq. 3526' SLM.

Signed D. C. Shackelford