



Western Michigan University
ScholarWorks at WMU

Legacy Scout Tickets from Pure Oil Company

8-20-2021

**MGRRE_PureOilScoutTickets_SCHNAPP, JAMES & WIGHT,
WYLIE_1_21057104760000**

MGRRE
Western Michigan University

Follow this and additional works at: <https://scholarworks.wmich.edu/pure>



Part of the Geology Commons

WMU ScholarWorks Citation

MGRRE, "MGRRE_PureOilScoutTickets_SCHNAPP, JAMES & WIGHT, WYLIE_1_21057104760000" (2021).
Legacy Scout Tickets from Pure Oil Company. 2615.
<https://scholarworks.wmich.edu/pure/2615>

This Document is brought to you for free and open access via ScholarWorks at WMU. It has been accepted for inclusion in Legacy Scout Tickets from Pure Oil Company by an authorized administrator of ScholarWorks at WMU. See the National Digital Catalogue - Science Base Catalogue for more collections submitted by MGRRE.



**MGRRE_PureOilScoutTickets_SCHNAPP, JAMES & WIGHT,
WYLIE_1_21057104760000**

API 21057104760000

Permit Number 10476

Lease Name SCHNAPP, JAMES & WIGHT, WYLIE

Well Number 1

County Gratiot

Township 11N

Range 4W

Section 19

2021 DEQ or Pure co_name PRUDENTIAL OIL AND GAS CORP

Pure Number 221

Latitude 43.32829

Longitude -84.83605

THE PURE OIL COMPANY

LOCATION REPORT

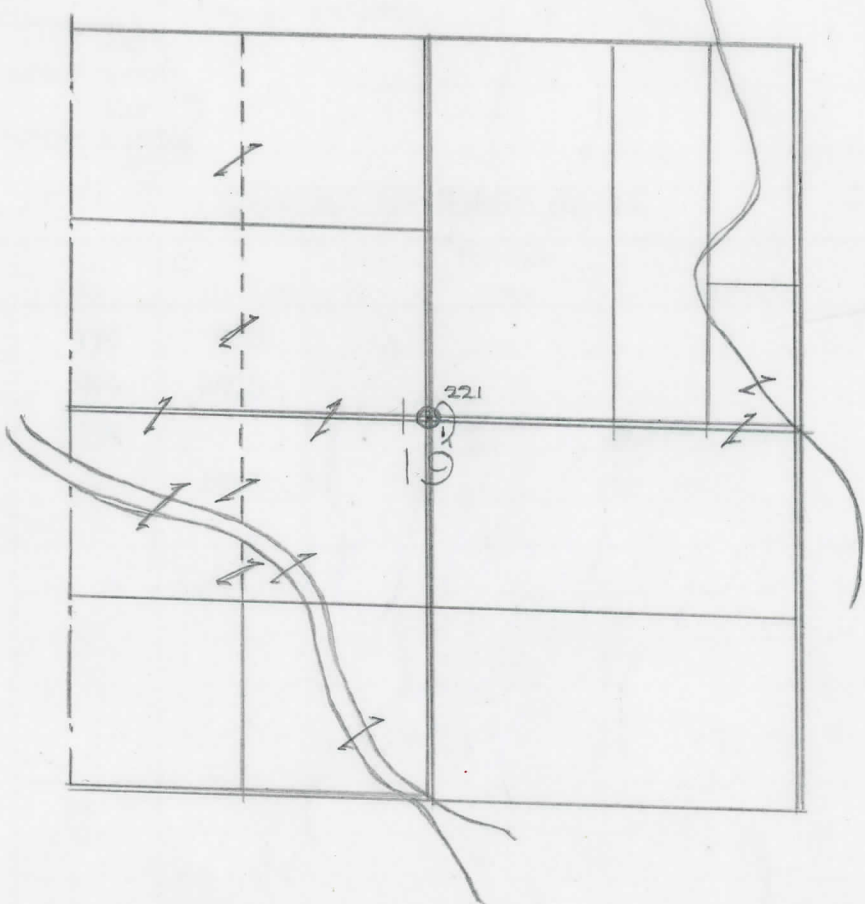
Date November 3, 1943 A.F.E. No. _____
 Division Mich. Producing District _____ Lease James Schnapp-Wylie Wight
James Schnapp-Wylie Wight
 Acres _____ Lease No. _____ Elevation _____ Well No. 1 (Serial No. 221)
 Quadrangle C Sec. 19 Twp. 11 N Rge. 4 W ~~Dist.~~ Sumner Twp. Sumner
 Survey _____ County Gratiot State Michigan
 Operator Prudential Oil & Gas Corp. Map Sumner Twp - Gratiot Co.
Prudential Oil & Gas Corp. Sumner Township, Gratiot County

<u>2640</u>	<u>2640</u>	Feet from North Line of Lease
<u>2640</u>	<u>2640</u>	" " East " " "
		" " South " " "
		" " West " " "
<u>2640</u>	<u>2640</u>	Feet from North Line of Section <u>1/4</u>
<u>2640</u>	<u>2640</u>	" " East " " "
		" " South " " "
		" " West " " "

193
Sp 10-25-43

LEGEND

- Location
- ☉ Gas Well
- Oil Well
- ☉ Gas - Distillate Well
- or ○ Dry Hole
- Dry Showing Oil
- ☉ Dry Showing Gas
- ⊗ Abandoned Location
- ☉ or ☉ Abandoned Gas Well
- or ● Abandoned Oil Well
- or ○ Input Well



Remarks: _____ Scale _____

Submitted by RN Civil Engineer Approved by _____ Division Manager
 Approved by _____ Vice-President - General Manager

