



Western Michigan University
ScholarWorks at WMU

Legacy Scout Tickets from Pure Oil Company

8-20-2021

MGRRE_PureOilScoutTickets_KAPRAL-ILER_1_21057107350000

MGRRE

Western Michigan University

Follow this and additional works at: <https://scholarworks.wmich.edu/pure>



Part of the Geology Commons

WMU ScholarWorks Citation

MGRRE, "MGRRE_PureOilScoutTickets_KAPRAL-ILER_1_21057107350000" (2021). *Legacy Scout Tickets from Pure Oil Company*. 2621.

<https://scholarworks.wmich.edu/pure/2621>

This Document is brought to you for free and open access via ScholarWorks at WMU. It has been accepted for inclusion in Legacy Scout Tickets from Pure Oil Company by an authorized administrator of ScholarWorks at WMU. See the National Digital Catalogue - Science Base Catalogue for more collections submitted by MGRRE.



MGRRE_PureOilScoutTickets_KAPRAL-ILER_1_21057107350000

API 21057107350000

Permit Number 10735

Lease Name KAPRAL-ILER

Well Number 1

County Gratiot

Township 10N

Range 2W

Section 7

2021 DEQ or Pure co_name WELLER C E

Pure Number 227

Latitude 43.27628

Longitude -84.58417

THE PURE OIL COMPANY

LOCATION REPORT

Date April 26, 1944 A.F.E. No. _____

Division Mich. Producing District _____ Lease Kapral-ller

Acres _____ Lease No. _____ Elevation _____ Well No. 1 (Serial No. 227)

Quadrangle NE-NE-NE Sec. 7 Twp. 10 N Rge. 2 W Dist. North Star

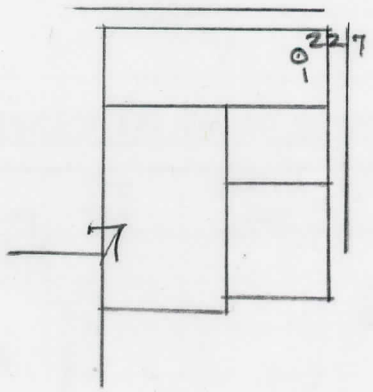
Survey _____ County Gratiot State Michigan

Operator C. E. Weller Map North Star Twp - Gratiot Co. North Star Township, Gratiot County

<u>330</u>	<u>330</u>	Feet from North Line of Lease
<u>330</u>	<u>330</u>	" " East " " "
		" " South " " "
		" " West " " "
<u>330</u>	<u>330</u>	Feet from North Line of Section <u>1/4</u>
<u>330</u>	<u>330</u>	" " East " " "
		" " South " " "
		" " West " " "

LEGEND

- Location
- ☀ Gas Well
- Oil Well
- ☀ Gas - Distillate Well
- or ○ Dry Hole
- Dry Showing Oil
- ☀ Dry Showing Gas
- ⊗ Abandoned Location
- ☀ or ☀ Abandoned Gas Well
- or ● Abandoned Oil Well
- or ○ Input Well



Scale _____

Remarks: _____

Submitted by RN Civil Engineer Approved by _____ Division Manager

Approved by _____ Vice-President - General Manager

*card
 find*

S.P. 10725

Michigan Producing Division

Date August 9, 1944 No. 227
 State Mich. County Gratiot ~~XXXX~~ Twp. North Star Sec. 7 Twp. 10 N Rge. 2 W
 (Serial No.)
 Well No. 1 (~~XXXXXX~~) 227 Farm Kapral-Iler Acres _____
 Operator C. E. Weller Information secured ~~XXXX~~ By Scouting Department
 Date well started 5-31-44 Date well completed 8-1-44 Elevation 743.8

PRODUCTION BOARD

Dry Hole
 1st 24 hours natural _____
 2nd 24 hours natural _____
 Date of shot _____ No. of quarts _____ From _____ to _____ From _____ to _____
 Date of acid _____ No. of gallons _____
 1st 24 hours after acid shot _____
 2nd 24 hours after acid shot _____

FORMATION AND CASING RECORD

Formation	Top	Bottom	Top Pay	Bottom Pay	Remarks	Casing	
						Size	Set at
Brown Dolomite	831	SLM				10"	302
Mich. Stray	906	- 82			Small show gas 918. H.F.S.W. 920.	8-1/4"	743
Coldw. Red Rock	2179	- 157				6-5/8"	1215
Sunbury	2189	- 135				5-3/16"	3121
Berea	2208	- 1459					
Antrim	2272	2635					
Traverse Lime:							
(Squaw Bay)	2639	- 1890					
(Alpena)	2680	- 1931					
Dundee	3120	- 2371			Show salt water 3180-3194.		
Total Depth		3207		- 2458	Salt water (700 ft. in 1 1/2 hrs.) from 3194-3207.		

Remarks 863' equals 857' SOM; 894' equals 902' SLM; 2515' equals 2510' SLM; 2644' equals 2639' SLM.

Signed D. C. Shackelford