



Western Michigan University  
ScholarWorks at WMU

---

Legacy Scout Tickets from Pure Oil Company

---

8-20-2021

**MGRRE\_PureOilScoutTickets\_SMOLKA,  
TONY\_1\_21057107870000**

MGRRE

*Western Michigan University*

Follow this and additional works at: <https://scholarworks.wmich.edu/pure>



Part of the Geology Commons

---

#### **WMU ScholarWorks Citation**

MGRRE, "MGRRE\_PureOilScoutTickets\_SMOLKA, TONY\_1\_21057107870000" (2021). *Legacy Scout Tickets from Pure Oil Company*. 2625.

<https://scholarworks.wmich.edu/pure/2625>

This Document is brought to you for free and open access via ScholarWorks at WMU. It has been accepted for inclusion in Legacy Scout Tickets from Pure Oil Company by an authorized administrator of ScholarWorks at WMU. See the National Digital Catalogue - Science Base Catalogue for more collections submitted by MGRRE.



---

**MGRRE\_PureOilScoutTickets\_SMOLKA, TONY\_1\_21057107870000**

API 21057107870000

Permit Number 10787

Lease Name SMOLKA, TONY

Well Number 1

County Gratiot

Township 10N

Range 2W

Section 26

2021 DEQ or Pure co\_name TURNER PETROLEUM CORP

Pure Number 231

Latitude 43.22371

Longitude -84.51609

# THE PURE OIL COMPANY

## LOCATION REPORT

Date May 24, 1944 A.F.E. No. \_\_\_\_\_

Division Mich. Producing District \_\_\_\_\_ Lease Tony Smolka  
Tony Smolka

Acres \_\_\_\_\_ Lease No. \_\_\_\_\_ Elevation \_\_\_\_\_ Well No. 1 (Serial No. 231)

Quadrangle C S 1/2 NE SW Sec. 26 Twp. 10 N Rge. 2 W Twp. North Star  
North Star

Survey \_\_\_\_\_ County Gratiot State Michigan

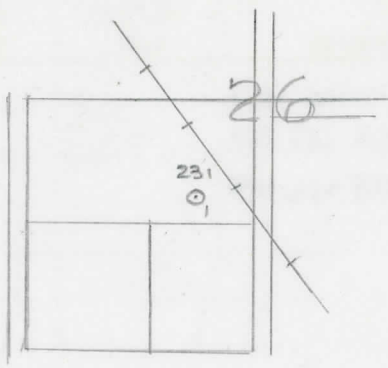
Operator Turner Petroleum Corporation Map North Star Township, Gratiot County

_____	_____	Feet from North Line of Lease
<u>660</u>	<u>660</u>	" " East " " "
<u>330</u>	<u>330</u>	" " South " " "
_____	_____	" " West " " "
<u>990</u>	<u>990</u>	Feet from North Line of Section <u>1/4</u>
<u>660</u>	<u>660</u>	" " East " " "
_____	_____	" " South " " "
_____	_____	" " West " " "

*Loc*

### LEGEND

- Location
- ☀ Gas Well
- Oil Well
- ☀ Gas - Distillate Well
- or ○ Dry Hole
- Dry Showing Oil
- ☀ Dry Showing Gas
- ⊗ Abandoned Location
- ☀ or ☀ Abandoned Gas Well
- or ● Abandoned Oil Well
- or ○ Input Well



Remarks: \_\_\_\_\_  
\_\_\_\_\_  
\_\_\_\_\_

Scale \_\_\_\_\_

Submitted by RN Civil Engineer Approved by \_\_\_\_\_ Division Manager

Approved by \_\_\_\_\_ Vice-President - General Manager

Date

North Star Twp

LOCATION BEBOBT

N.E.E. NO.

COMPLETION RECORD OF WELLS DRILLED BY OTHER OPERATORS

Michigan Producing Division

Date August 2, 1944 No. 231

State Mich. County Gratiot Twp. North Star Sec. 26 Twp. 10 N Rge. 2 W (Serial No.)

Well No. 1 (County No.) 231 Farm Tony Smolka Acres

Operator Turner Petroleum Corporation Information secured By Scouting Department

Date well started 6-24-44 Date well completed 7-28-44 Elevation 690.1

PRODUCTION BOARD

1st 24 hours natural Dry Hole

2nd 24 hours natural

Date of shot No. of quarts From to From to

Date of acid No. of gallons

1st 24 hours after acid shot

2nd 24 hours after acid shot

FORMATION AND CASING RECORD

Table with 7 columns: Formation, Top, Bottom, Top Pay, Bottom Pay, Remarks, Casing (Size, Set at). Rows include Brom Dolomite, Mich. Stray, Marshall, Coldw. Red Rock, Sunbury, Berea, Antrim, Traverse Line (Squaw Bay), Dundee, and Total Depth.

Remarks 2625' equals 2638' SLM; 1663' equals 1671' SLM.

Trav. fm. 2553 (-1863)

Signed D. C. Shackelford