



Legacy Scout Tickets from Pure Oil Company

8-20-2021

**MGRRE_PureOilScoutTickets_RHYNARD, EARL ET
AL_1_21057108740000**

MGRRE

Western Michigan University

Follow this and additional works at: <https://scholarworks.wmich.edu/pure>



Part of the Geology Commons

WMU ScholarWorks Citation

MGRRE, "MGRRE_PureOilScoutTickets_RHYNARD, EARL ET AL_1_21057108740000" (2021). *Legacy Scout Tickets from Pure Oil Company*. 2626.
<https://scholarworks.wmich.edu/pure/2626>

This Document is brought to you for free and open access via ScholarWorks at WMU. It has been accepted for inclusion in Legacy Scout Tickets from Pure Oil Company by an authorized administrator of ScholarWorks at WMU. See the National Digital Catalogue - Science Base Catalogue for more collections submitted by MGRRE.



MGRRE_PureOilScoutTickets_RHYNARD, EARL ET AL_1_21057108740000

API 21057108740000

Permit Number 10874

Lease Name RHYNARD, EARL ET AL

Well Number 1

County Gratiot

Township 11N

Range 3W

Section 35

2021 DEQ or Pure co_name WELLER C E

Pure Number 232

Latitude 43.2952

Longitude -84.63184

THE PURE OIL COMPANY

LOCATION REPORT

Date June 28, 1944

A.F.E. No. _____

Division Mich. Producing District _____

Lease Earl Rhynard et al
Earl Rhynard, et al

Acres _____ Lease No. _____

Elevation _____ Well No. 1 (Serial No. 232)

Quadrangle SW-NE-SE
SW NE SE Sec. 35

Twp. 11 N Rge. 3 W
11 N 3 W

~~XXX~~ Arcada
~~XXX~~ Arcada

Survey _____

County Gratiot

State Michigan
Arcada Twp - Gratiot Co

Operator C. E. Weller

Map Arcada Township, Gratiot County

1270 1270 Feet from North Line of Lease

1220 1220 " " East " " "

" " South " " "

" " West " " "

1270 1270 Feet from North Line of Section

1220 1220 " " East " " "

" " South " " "

" " West " " "

LEGEND

○ Location

☀ Gas Well

● Oil Well

☀ Gas - Distillate Well

○ or ○ Dry Hole

● Dry Showing Oil

☀ Dry Showing Gas

⊗ Abandoned Location

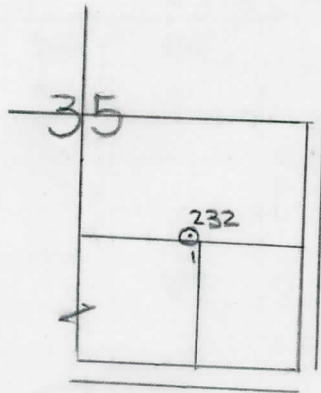
☀ or ☀ Abandoned Gas Well

● or ● Abandoned Oil Well

⊗ or ⊗ Inlet Well

Rum

N



Scale _____

Remarks: _____

Submitted by ZN Civil Engineer

Approved by _____ Division Manager

Approved by _____ Vice-President - General Manager

COMPLETION RECORD OF WELLS DRILLED BY OTHER OPERATORS

Michigan Producing Division

Date August 9, 1944 No. 232
 State Mich. County Gratiot ~~District~~ Twp. Arcada Sec. 35 Twp. 11 N Rge. 3 W
 (Serial No.)
 Well No. 1 (232200000) 232 Farm Earl Rhynard, et al Acres _____
 Operator C. E. Weller Information secured ~~from~~ By Scouting Department
 Date well started 7-5-44 Date well completed 8-7-44 Elevation 751.3

PRODUCTION BOARD

1st 24 hours natural Dry Hole
 2nd 24 hours natural _____
 Date of shot _____ No. of quarts _____ From _____ to _____ From _____ to _____
 Date of acid _____ No. of gallons _____
 1st 24 hours after acid shot _____
 2nd 24 hours after acid shot _____

FORMATION AND CASING RECORD

Formation	Top	Bottom	Top Pay	Bottom Pay	Remarks	Casing	
						Size	Set at
Brown Dolomite	846	(95) SLM				8"	280
Mich. Stray	884	(133)			Show gas 889. (138)	6-5/8"	333
					Show salt water 910-915. (159)	5-3/16"	886
					H.F.S.W. 925-937. (174)		
Total Depth		937	(186)				

Remarks 825' equals 824' SLM.

Signed D. C. Shackelford