



Western Michigan University
ScholarWorks at WMU

Legacy Scout Tickets from Pure Oil Company

8-20-2021

**MGRRE_PureOilScoutTickets_JORDAN, JOHN W. ET
AL_1_21057114300000**

MGRRE
Western Michigan University

Follow this and additional works at: <https://scholarworks.wmich.edu/pure>



Part of the Geology Commons

WMU ScholarWorks Citation

MGRRE, "MGRRE_PureOilScoutTickets_JORDAN, JOHN W. ET AL_1_21057114300000" (2021). *Legacy Scout Tickets from Pure Oil Company*. 2634.
<https://scholarworks.wmich.edu/pure/2634>

This Document is brought to you for free and open access via ScholarWorks at WMU. It has been accepted for inclusion in Legacy Scout Tickets from Pure Oil Company by an authorized administrator of ScholarWorks at WMU. See the National Digital Catalogue - Science Base Catalogue for more collections submitted by MGRRE.



MGRRE_PureOilScoutTickets_JORDAN, JOHN W. ET AL_1_21057114300000

API 21057114300000

Permit Number 11430

Lease Name JORDAN, JOHN W. ET AL

Well Number 1

County Gratiot

Township 11N

Range 3W

Section 25

2021 DEQ or Pure co_name ARENAC OIL AND GAS CO

Pure Number 240

Latitude 43.31706

Longitude -84.62198

THE PURE OIL COMPANY

LOCATION REPORT

Date March 28, 1945

A.F.E. No. _____

Division Mich. Producing District _____

Lease John W. Jordan et al
John W. Jordan, et al

Acres _____ Lease No. _____ Elevation _____ Well No. 1 (Serial No. 240 *)

Quadrangle C NW Sec. 25 Twp. 11 N Rge. 3 W ~~Brk.~~ ~~Dist.~~ Twp. Arcada

Survey _____ County Gratiot State Michigan

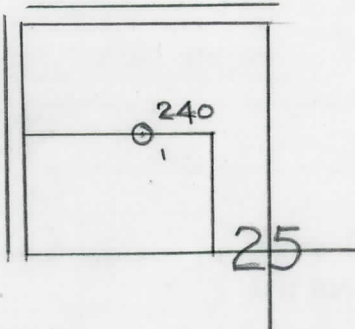
Operator Arenac Oil & Gas Co Map Arcada Twp - Gratiot Co.
Arenac Oil & Gas Company Arcada Township, Gratiot County

<u>1320</u>	<u>1320</u>	Feet from North Line of Lease
_____	_____	" " East " " "
_____	_____	" " South " " "
<u>1320</u>	<u>1320</u>	" " West " <u>1/4</u> "
<u>1320</u>	<u>1320</u>	Feet from North Line of Section
_____	_____	" " East " " "
_____	_____	" " South " " "
<u>1320</u>	<u>1320</u>	" " West " " "

LEGEND

- Location
- ☉ Gas Well
- Oil Well
- ☉ Gas - Distillate Well
- ∅ or ○ Dry Hole
- Dry Showing Oil
- ☉ Dry Showing Gas
- ⊗ Abandoned Location
- ☉ or ⊗ Abandoned Gas Well
- or ● Abandoned Oil Well
- or ○ Input Well

60
324-45



Remarks: _____

Scale _____

Submitted by RN Civil Engineer

Approved by _____ Division Manager

Approved by _____ Vice-President - General Manager

Date April 18, 1945

LOCATION REPORT

JOHN M. JORDAN, et al
V.E.E. NO. 20198

COMPLETION RECORD OF WELLS DRILLED BY OTHER OPERATORS

Michigan Producing Division

Date April 18, 1945 No. 240
 State Mich. County Gratiot ~~XXXXXX~~ Twp. Arcada Sec. 25 Twp. 11 N Rge. 3 W
 (Serial No.)
 Well No. 1 (~~XXXXXX~~) 240 Farm J. W. Jordan, et al Acres
 Operator Arenac Oil & Gas Company Information secured ~~XXXX~~ By Scouting Department
 Date well started 3-24-45 Date well completed 4-13-45 Elevation 774.0

PRODUCTION BOARD

1st 24 hours natural Dry Hole
 2nd 24 hours natural
 Date of shot No. of quarts From To From to
 Date of acid No. of gallons
 shot
 1st 24 hours after acid
 shot
 2nd 24 hours after acid

FORMATION AND CASING RECORD

Formation	Top	Bottom	Top Pay	Bottom Pay	Remarks	Casing	
						Size	Set at
Brown Dolomite	866	SLM.	(-92)			8-5/8"	522
Mich. Stray	905	"	(-131)		Water (200 ft. in 1/2 hr.) 945-950.	6-5/8"	576
Total Depth		950	(-176)		(-171)	5-3/16"	873

Remarks

Signed D. C. Shackelford