



Western Michigan University  
ScholarWorks at WMU

---

Legacy Scout Tickets from Pure Oil Company

---

8-20-2021

**MGRRE\_PureOilScoutTickets\_SIPKA, PAUL\_1\_na**

MGRRE

*Western Michigan University*

Follow this and additional works at: <https://scholarworks.wmich.edu/pure>



Part of the Geology Commons

---

#### **WMU ScholarWorks Citation**

MGRRE, "MGRRE\_PureOilScoutTickets\_SIPKA, PAUL\_1\_na" (2021). *Legacy Scout Tickets from Pure Oil Company*. 2638.

<https://scholarworks.wmich.edu/pure/2638>

This Document is brought to you for free and open access via ScholarWorks at WMU. It has been accepted for inclusion in Legacy Scout Tickets from Pure Oil Company by an authorized administrator of ScholarWorks at WMU. See the National Digital Catalogue - Science Base Catalogue for more collections submitted by MGRRE.



---

MGRRE\_PureOilScoutTickets\_SIPKA, PAUL\_1\_na

API na

Permit Number na

Lease Name SIPKA, PAUL

Well Number 1

County Gratiot

Township 9N

Range 1W

Section 14

2021 DEQ or Pure co\_name MERRILL DRILLING CO

Pure Number 244

Latitude 43.1686415

Longitude -84.398053

# THE PURE OIL COMPANY

## LOCATION REPORT

Date September 6, 1945

A.F.E. No. \_\_\_\_\_

Division Mich. Producing District \_\_\_\_\_

Lease PAUL SIPKA  
Paul Sipka

Acres \_\_\_\_\_ Lease No. \_\_\_\_\_

Elevation \_\_\_\_\_ Well No. 1 (Serial No. 244)

Quadrangle SW SW SE Sec. 14 Twp. 9 N Rge. 1 W XBLK. ELBA  
Dist. Elba

Survey \_\_\_\_\_ County Gratiot State Michigan

Operator MERRILL DRILLING CO.  
Merrill Drilling Company Map Elba Township, Gratiot County

Feet from North Line of Lease

" " East " " "

" " South " " "

" " West " " "

Feet from North Line of Section

" " East " " "

" " South " " 1/4

" " West " " "

330 330  
330 330

330 330  
330 330

### LEGEND

○ Location

☀ Gas Well

● Oil Well

☀ Gas - Distillate Well

○ or ○ Dry Hole

● or ● Dry Showing Oil

☀ Dry Showing Gas

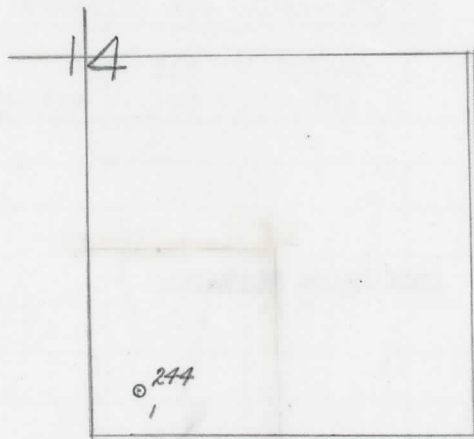
⊗ Abandoned Location

☀ or ⊗ Abandoned Gas Well

● or ● Abandoned Oil Well

● or ○ Input Well

*map*



Scale \_\_\_\_\_

Remarks: \_\_\_\_\_  
\_\_\_\_\_  
\_\_\_\_\_

Submitted by \_\_\_\_\_  
Civil Engineer

Approved by \_\_\_\_\_  
Division Manager

Approved by \_\_\_\_\_  
Vice-President - General Manager

we

COMPLETION RECORD OF WELLS DRILLED BY OTHER OPERATORS

Michigan Producing Division

Date November 7, 1945 No. 244
State Michigan Co. Gratiot Dist. Elba Sec. 14 Twp. 9 N Rge. 1 W
Well No. 1 Serial No. 244 Farm Paul Sipka Acres
Operator Merrill Drilling Company
Date started Not started. Date completed Not completed. Elevation

PRODUCTION RECORD

1st 24 hours natural LOCATION ABANDONED
Date of shot No. of quarts From To From to
Date of acid shot No. of gallons
1st 24 hours after acid
Completed as: Oil Well Gas Well Dry Hole

FORMATION AND CASING RECORD

Table with 7 columns: Formation, Top, Bottom, Top Pay, Bottom Pay, Remarks, Casing (Size, Set at). Contains 'LOCATION ABANDONED' in the Remarks column.

Remarks

Signed D. C. Shackelford