



Western Michigan University
ScholarWorks at WMU

Legacy Scout Tickets from Pure Oil Company

8-20-2021

**MGRRE_PureOilScoutTickets_ELBA GAS
UNIT_4_21057122070000**

MGRRE
Western Michigan University

Follow this and additional works at: <https://scholarworks.wmich.edu/pure>



Part of the Geology Commons

WMU ScholarWorks Citation

MGRRE, "MGRRE_PureOilScoutTickets_ELBA GAS UNIT_4_21057122070000" (2021). *Legacy Scout Tickets from Pure Oil Company*. 2654.
<https://scholarworks.wmich.edu/pure/2654>

This Document is brought to you for free and open access via ScholarWorks at WMU. It has been accepted for inclusion in Legacy Scout Tickets from Pure Oil Company by an authorized administrator of ScholarWorks at WMU. See the National Digital Catalogue - Science Base Catalogue for more collections submitted by MGRRE.



MGRRE_PureOilScoutTickets_ELBA GAS UNIT_4_21057122070000

API 21057122070000

Permit Number 12207

Lease Name ELBA GAS UNIT

Well Number 4

County Gratiot

Township 9N

Range 1W

Section 15

2021 DEQ or Pure co_name MATLOCK RAY W AND WILLIAMS ARTHUR E

Pure Number 260

Latitude 43.16489

Longitude -84.42284

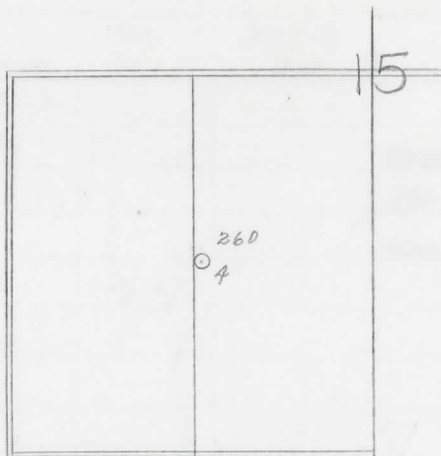
THE PURE OIL COMPANY LOCATION REPORT

Date April 10, 1946 A.F.E. No. _____
 Division Mich. Producing District _____ Lease Elba Gas Unit
 Acres _____ Lease No. _____ Elevation _____ Well No. 4 (Serial No. 260)
 Quadrangle C SW Sec. 15 Twp. 9 N Rge. 1 W ~~XBX~~ ~~XBX~~ Elba
 Survey _____ County Gratiot State Michigan
 Operator Ray W. Matlock & Arthur Williams Map Elba Township, Gratiot County

		Feet from North Line of Lease		
		" "	East	" " "
<u>1320</u>	<u>1320</u>	" "	South	" " "
<u>1320</u>	<u>1320</u>	" "	West	" " "
		Feet from North Line of Section		
		" "	East	" " "
<u>1320</u>	<u>1320</u>	" "	South	" <u>1/4</u> "
<u>1320</u>	<u>1320</u>	" "	West	" " "

LEGEND

- Location
- ☀ Gas Well
- Oil Well
- ☀ Gas - Distillate Well
- ∅ or ○ Dry Hole
- Dry Showing Oil
- ☀ Dry Showing Gas
- ⊗ Abandoned Location
- ☀ or ⊗ Abandoned Gas Well
- or ● Abandoned Oil Well
- or ○ Input Well



Remarks: _____

Submitted by CB Civil Engineer Approved by _____ Division Manager
 Approved by _____ Vice-President - General Manager

COMPLETION RECORD OF WELLS DRILLED BY OTHER OPERATORS

Michigan Producing Division

Date April 24, 1946 No. 260
 State Michigan Co. Gratiot ~~X~~ Twp. Elba Sec. 15 Twp. 9 N Rge. 1 W
 Well No. 4 Serial No. 260 Farm Elba Gas Unit Acres _____
 Operator Matlock & Williams
 Date started 4-6-46 Date completed 4-22-46 Elevation 661.8

PRODUCTION RECORD

1st 24 hours natural _____
 Date of shot _____ No. of quarts _____ From _____ To _____ From _____ To _____
 Date of acid _____ No. of gallons _____ shot _____
 1st 24 hours after acid _____
 Completed as: Oil Well _____ Gas Well _____ Dry Hole X

FORMATION AND CASING RECORD

Formation	Top	Bottom	Top Pay	Bottom Pay	Remarks	Casing	
						Size	Set at
Brown Dolomite	620	(+42)				5-3/16"	652
Mich. Stray	653	(+9)			HPS# 653-654 (+9) 250 ft. S.W. in 12 hrs. at 674.	4-1/2"	669
Total Depth		696	(-34)		(-12)		

Remarks _____

Signed D. C. Shackelford