



Western Michigan University
ScholarWorks at WMU

Legacy Scout Tickets from Pure Oil Company

8-20-2021

**MGRRE_PureOilScoutTickets_REDMAN,
CLAYTON_1_21057123940000**

MGRRE
Western Michigan University

Follow this and additional works at: <https://scholarworks.wmich.edu/pure>



Part of the Geology Commons

WMU ScholarWorks Citation

MGRRE, "MGRRE_PureOilScoutTickets_REDMAN, CLAYTON_1_21057123940000" (2021). *Legacy Scout Tickets from Pure Oil Company*. 2660.
<https://scholarworks.wmich.edu/pure/2660>

This Document is brought to you for free and open access via ScholarWorks at WMU. It has been accepted for inclusion in Legacy Scout Tickets from Pure Oil Company by an authorized administrator of ScholarWorks at WMU. See the National Digital Catalogue - Science Base Catalogue for more collections submitted by MGRRE.



MGRRE_PureOilScoutTickets_REDMAN, CLAYTON_1_21057123940000

API 21057123940000

Permit Number 12394

Lease Name REDMAN, CLAYTON

Well Number 1

County Gratiot

Township 11N

Range 4W

Section 2

2021 DEQ or Pure co_name MAGUIRE C L INC

Pure Number 266

Latitude 43.37834

Longitude -84.75277

THE PURE OIL COMPANY

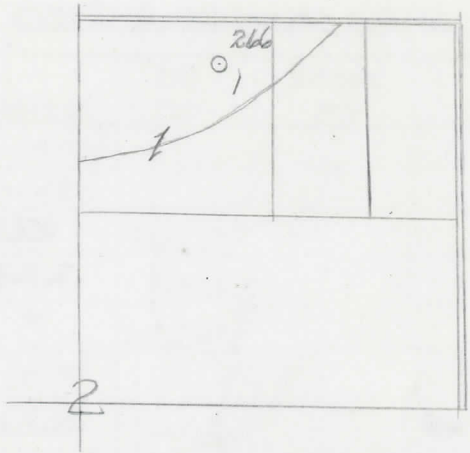
LOCATION REPORT

Date June 19, 1946 A.F.E. No. Clayton Redman
 Division Mich. Producing District _____ Lease Clayton Redman
 Acres _____ Lease No. _____ Elevation _____ Well No. 1 (Serial No. 266)
 Quadrangle NE-NW-NE Sec. 2 Twp. 11 N Rge. 4 W Twp. Summer
 Survey _____ County Gratiot State Michigan
 Operator C. L. Maguire, Inc. Map Summer Township, Gratiot County

330 330 Feet from North Line of Lease
660 660 " " East " " "
 " " South " " "
 " " West " " "
330 330 Feet from North Line of Section
 " " East " " "
 " " South " " "
960 960 " " West " " "

LEGEND

- Location
- ☀ Gas Well
- Oil Well
- ☀ Gas - Distillate Well
- ∅ or ○ Dry Hole
- Dry Showing Oil
- ☀ Dry Showing Gas
- ⊗ Abandoned Location
- ☀ or ⊗ Abandoned Gas Well
- or ● Abandoned Oil Well
- or ○ Input Well



Remarks: _____ Scale _____

Submitted by CB Civil Engineer Approved by _____ Division Manager
 Approved by _____ Vice-President - General Manager

COMPLETION RECORD OF WELLS DRILLED BY OTHER OPERATORS

Michigan Producing Division

Date July 24, 1946 No. 266
 State Mich. Co. Gratiot ~~Dixie~~ Twp. Sumner Sec. 2 Twp. 11 N Rge. 4 W
 Well No. 1 Serial No. 266 Farm Clayton Redman Acres _____
 Operator C. L. Maguire, Inc.
 Date started 6-17-46 Date completed 7-16-46 Elevation 764.7

PRODUCTION RECORD

1st 24 hours natural _____
 Date of shot _____ No. of quarts _____ From _____ To _____ From _____ To _____
 Date of acid _____ No. of gallons _____ shot _____
 1st 24 hours after acid _____
 Completed as: Oil Well _____ Gas Well _____ Dry Hole X

FORMATION AND CASING RECORD

Formation	Top	Bottom	Top Pay	Bottom Pay	Remarks	Casing	
						Size	Set at
Brown Dolomite	965	(-200)				10"	405
Mich. Stray	1014	(-249)				8-1/4"	835
Marshall	1049	1330	(-284)			6-5/8"	1365
Coldw. Red Rock	2320	S.O.M.	(-1555)				
Sunbury	2326	"	(-1561)				
Antrim	2377	(-1612)					
Traverse Lime	2797	S.L.M.	(-2032)		See remarks below.		
Dundee	3314	(-2549)			2300 ft. black salt water 3325-3328.	(-2560)	
Total Depth		3328	(-2563)				
					(-2276)		

Remarks 300 ft. salt water in 8 hours from 3041-3050 - exhausted.
 1431' equals 1431' SOM; 2415' equals 2400' SOM; 2636' equals 2636' SIM.

Signed D. C. Shackelford