



Western Michigan University
ScholarWorks at WMU

Legacy Scout Tickets from Pure Oil Company

8-20-2021

MGRRE_PureOilScoutTickets_SPIDEL, G. F._1_21057124950000

MGRRE

Western Michigan University

Follow this and additional works at: <https://scholarworks.wmich.edu/pure>



Part of the Geology Commons

WMU ScholarWorks Citation

MGRRE, "MGRRE_PureOilScoutTickets_SPIDEL, G. F._1_21057124950000" (2021). *Legacy Scout Tickets from Pure Oil Company*. 2662.

<https://scholarworks.wmich.edu/pure/2662>

This Document is brought to you for free and open access via ScholarWorks at WMU. It has been accepted for inclusion in Legacy Scout Tickets from Pure Oil Company by an authorized administrator of ScholarWorks at WMU. See the National Digital Catalogue - Science Base Catalogue for more collections submitted by MGRRE.



MGRRE_PureOilScoutTickets_SPIDEL, G. F._1_21057124950000

API 21057124950000

Permit Number 12495

Lease Name SPIDEL, G. F.

Well Number 1

County Gratiot

Township 10N

Range 2W

Section 2

2021 DEQ or Pure co_name MATLOCK RAY W AND WILLIAMS ARTHUR E

Pure Number 268

Latitude 43.27998

Longitude -84.51983

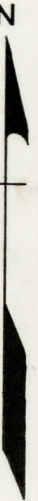
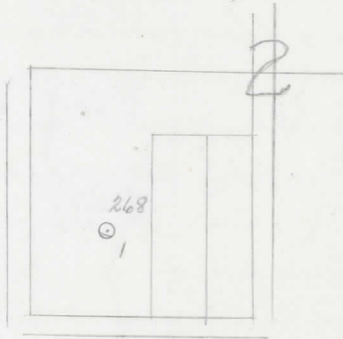
THE PURE OIL COMPANY
LOCATION REPORT

Date July 31, 1946 A.F.E. No. G. F. Spidel
 Division Mich. Producing District _____ Lease G. F. Spidel
 Acres _____ Lease No. _____ Elevation _____ Well No. 1 (Serial No. 268)
 Quadrangle NE-SW-SW Sec. 2 Twp. 10 N Rge. 2 W Twp. North Star
 Survey _____ County Gratiot State Michigan
 Operator R. W. Matlock & A. E. Williams Map North Star Township, Gratiot County

Feet from North Line of Lease	
<u>330</u>	<u>330</u>
<u>990</u>	<u>990</u>
" "	East " " "
" "	South " " "
" "	West " " "
Feet from North Line of Section	
<u>990</u>	<u>990</u>
<u>990</u>	<u>990</u>
" "	East " " "
" "	South " <u>1/4</u> "
" "	West " " "

LEGEND

- Location
- ☀ Gas Well
- Oil Well
- ☀ Gas - Distillate Well
- ⊖ or ○ Dry Hole
- Dry Showing Oil
- ☀ Dry Showing Gas
- ⊖ Abandoned Location
- ☀ or ☀ Abandoned Gas Well
- or ● Abandoned Oil Well
- or ○ Input Well



Remarks: _____ Scale _____

Submitted by CB Civil Engineer Approved by _____ Division Manager
 Approved by _____ Vice-President - General Manager

THE PURE OIL COMPANY

The Pure Oil Company

COMPLETION RECORD OF WELLS DRILLED BY OTHER OPERATORS

Michigan Producing Division

Date October 9, 1946 No. 268
 State Michigan Co. Gratiot Twp. North Star Sec. 2 Twp. 10 N Rge 2 W
 Well No. 1 Serial No. 268 Farm G. F. Spidel Acres _____
 Operator R. W. Matlock & A. E. Williams
 Date started 7-31-46 Date completed 10-3-46 Elevation 720.8

PRODUCTION RECORD

1st 24 hours natural _____
 Date of shot _____ No. of quarts _____ From _____ To _____ From _____ to _____
 Date of acid _____ No. of gallons _____
 1st 24 hours after acid _____
 Completed as: Oil Well _____ Gas Well _____ Dry Hole X

FORMATION AND CASING RECORD

Formation	Top	Bottom	Top Pay	Bottom Pay	Remarks	Casing	
						Size	Set at
Brown Dolomite	810	819	(-89)			10"	313
Stray Stray	835	(-114)				8-1/4" RH	608
Mich. Stray	879	S.L.M.	(-158)		Water (80 ft. 1 1/2 hrs.) 885-888.	6-5/8"	802
Total Depth		888	(-167)			(-164)	

Remarks 885' CTM equals 880' SLM.

Signed Harry J. Gaspeny