



Western Michigan University  
ScholarWorks at WMU

---

Legacy Scout Tickets from Pure Oil Company

---

8-20-2021

**MGRRE\_PureOilScoutTickets\_SHANKEL, A P\_1\_21057125920000**

MGRRE

*Western Michigan University*

Follow this and additional works at: <https://scholarworks.wmich.edu/pure>



Part of the Geology Commons

---

#### **WMU ScholarWorks Citation**

MGRRE, "MGRRE\_PureOilScoutTickets\_SHANKEL, A P\_1\_21057125920000" (2021). *Legacy Scout Tickets from Pure Oil Company*. 2664.

<https://scholarworks.wmich.edu/pure/2664>

This Document is brought to you for free and open access via ScholarWorks at WMU. It has been accepted for inclusion in Legacy Scout Tickets from Pure Oil Company by an authorized administrator of ScholarWorks at WMU. See the National Digital Catalogue - Science Base Catalogue for more collections submitted by MGRRE.



---

**MGRRE\_PureOilScoutTickets\_SHANKEL, A P\_1\_21057125920000**

API 21057125920000

Permit Number 12592

Lease Name SHANKEL, A P

Well Number 1

County Gratiot

Township 12N

Range 1W

Section 33

2021 DEQ or Pure co\_name SMITH PETROLEUM CO

Pure Number 270

Latitude 43.37987

Longitude -84.4357

# THE PURE OIL COMPANY

## LOCATION REPORT

Date September 11, 1946

A.F.E. No. \_\_\_\_\_

Division Mich. Producing District \_\_\_\_\_

Lease A. P. Shankel  
A. P. Shankel

Acres \_\_\_\_\_ Lease No. \_\_\_\_\_

Elevation \_\_\_\_\_

Well No. 1

(Serial No. 270)

Quadrangle SE-SW-SE  
SE SW SE

Sec. 33

Twp. 12 N

Rge. 1 W

Twp. Wheeler  
Wheeler

Survey \_\_\_\_\_ County Gratiot

Gratiot

State Michigan

Operator Smith Pet. Co.  
Smith Petroleum Company

Map Wheeler Township, Gratiot County

Feet from North Line of Lease

330 330 " " East " " "

330 330 " " South " " "

" " West " " "

Feet from North Line of Section

" " East " " "

330 330 " " South " 1/4 "

990 990 " " West " " "

### LEGEND

○ Location

☀ Gas Well

☀ Dry Showing Gas

● Oil Well

⊗ Abandoned Location

☀ Gas - Distillate Well

☀ or ☀ Abandoned Gas Well

○ or ○ Dry Hole

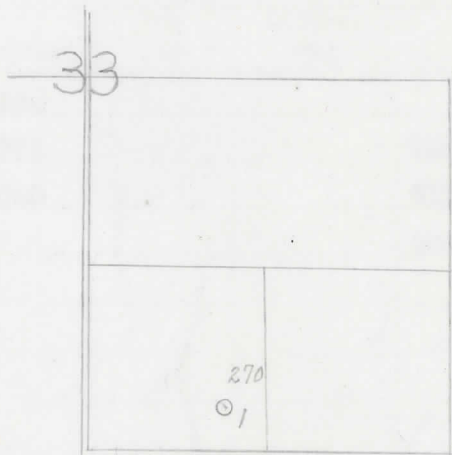
● or ● Abandoned Oil Well

● Dry Showing Oil

● or ○ Input Well

*map*

N



Scale \_\_\_\_\_

Remarks: \_\_\_\_\_

Submitted by CB

Civil Engineer

Approved by \_\_\_\_\_

Division Manager

Approved by \_\_\_\_\_

Vice-President - General Manager

COMPLETION RECORD OF WELLS DRILLED BY OTHER OPERATORS

Michigan Producing Division

Date October 30, 1946 No. 270  
 State Mich. Co. Gratiot Dist. \_\_\_\_\_  
 Twp. Wheeler Sec. 33 Twp. 12N Rge. 1W  
 Well No. 1 Serial No. 270 Farm A. P. Shankel Acres \_\_\_\_\_  
 Operator Smith Pet. Co.  
 Date started 10-15-46 Date completed 10-27-46 Elevation 713.1

PRODUCTION RECORD

1st 24 hours natural \_\_\_\_\_  
 Date of shot \_\_\_\_\_ No. of quarts \_\_\_\_\_ From \_\_\_\_\_ To \_\_\_\_\_ From \_\_\_\_\_ to \_\_\_\_\_  
 Date of acid \_\_\_\_\_ No. of gallons \_\_\_\_\_ shot \_\_\_\_\_  
 1st 24 hours after acid \_\_\_\_\_  
 Completed as: Oil Well \_\_\_\_\_ Gas Well \_\_\_\_\_ Dry Hole X

FORMATION AND CASING RECORD

Formation	Top	Bottom	Top Pay	Bottom Pay	Remarks	Casing	
						Size	Set at
Brown Dolomite	885	894	(-172)			10-3/4"	351
Stray Stray	968	975	(-255)		748 CTM = 748 SLM	8-1/4"	743
Mich. Stray	998	1040	(-285)		911 CTM = 912 SLM		
Marshall	1049	(-336)			500' Wtr. 1000'	(-287)	
Total Depth	1154	(-441)					

Remarks \_\_\_\_\_

Signed Harry J. Gaspeny