



Western Michigan University
ScholarWorks at WMU

Legacy Scout Tickets from Pure Oil Company

8-20-2021

MGRRE_PureOilScoutTickets_CRUM, TED_1_21057126640000

MGRRE

Western Michigan University

Follow this and additional works at: <https://scholarworks.wmich.edu/pure>



Part of the Geology Commons

WMU ScholarWorks Citation

MGRRE, "MGRRE_PureOilScoutTickets_CRUM, TED_1_21057126640000" (2021). *Legacy Scout Tickets from Pure Oil Company*. 2665.

<https://scholarworks.wmich.edu/pure/2665>

This Document is brought to you for free and open access via ScholarWorks at WMU. It has been accepted for inclusion in Legacy Scout Tickets from Pure Oil Company by an authorized administrator of ScholarWorks at WMU. See the National Digital Catalogue - Science Base Catalogue for more collections submitted by MGRRE.



MGRRE_PureOilScoutTickets_CRUM, TED_1_21057126640000

API 21057126640000

Permit Number 12664

Lease Name CRUM, TED

Well Number 1

County Gratiot

Township 12N

Range 4W

Section 21

2021 DEQ or Pure co_name MCCLURE DRILLING CO THE

Pure Number 271

Latitude 43.42185

Longitude -84.80284

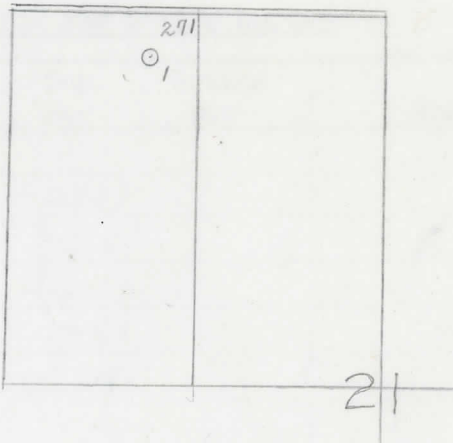
THE PURE OIL COMPANY LOCATION REPORT

Date October 9, 1946 A.F.E. No. _____
 Division Mich. Producing District _____ Lease Ted Crum
 Acres _____ Lease No. _____ Elevation _____ Well No. 1 (Serial No. 271)
 Quadrangle NE-NW-NW Sec. 21 Twp. 12 N Rge. 4 W ~~Dist~~ Seville
 Survey _____ County Gratiot State Michigan
 Operator McClure Drilling Co. Map Seville Township, Gratiot County
McClure Drilling Company

<u>330</u>	<u>330</u>	Feet from North Line of Lease
<u>330</u>	<u>330</u>	" " East " " "
		" " South " " "
		" " West " " "
<u>330</u>	<u>330</u>	Feet from North Line of Section
		" " East " " "
		" " South " " "
<u>990</u>	<u>990</u>	" " West " " "

LEGEND

- ☀ Gas Well
- Oil Well
- ☀ Gas - Distillate Well
- ∅ or ○ Dry Hole
- Dry Showing Oil
- Location
- ☉ Dry Showing Gas
- ⊗ Abandoned Location
- ☀ or ☀ Abandoned Gas Well
- or ● Abandoned Oil Well
- or ○ Input Well



*Mc 132
Sp 10-4*

Remarks: _____ Scale _____

Submitted by CB Civil Engineer Approved by _____ Division Manager
 Approved by _____ Vice-President - General Manager

LOCATION BELOW
THE PURE OIL COMPANY
THE PURE OIL COMPANY

COMPLETION RECORD OF WELLS DRILLED BY OTHER OPERATORS

Michigan Producing DIVISION

Date December 11, 1946 No. 271
 State Mich. Co. Gratiot Dist. Seville Twp. Seville Sec. 21 Twp. 12 N Rge. 4 W
 Well No. 1 Serial No. 271 Farm Ted Crum Acres _____
 Operator McClure Drilling Company
 Date started 10-4-46 Date completed 12-5-46 Elevation 821.6

PRODUCTION RECORD

1st 24 hours natural
 Date of shot _____ No. of quarts _____ From _____ To _____ From _____ To _____
 Date of acid _____ No. of gallons shot _____
 1st 24 hours after acid _____
 Completed as: Oil Well _____ Gas Well _____ Dry Hole X

FORMATION AND CASING RECORD

Formation	Top	Bottom	Top Pay	Bottom Pay	Remarks	Casing	
						Size	Set at
Brown Dolomite	1130	(-308)				10"	469
Mich. Stray	1216	SOM.	(-394)			8-1/4"	926
Marshall		1488	(-666)			6-5/8"	1546
Sunbury	2485	CTM.	(-1663)				
Antrim	2525	"	(-1703)				
Traverse Form.	2938	"	(-2116)				
Traverse Lime	2938	(-2116)					
Trav.-Alpena	2988	(-2166)			1 ba. water per hr. 3080-3090. (2258)		
Dundee	3470	SLM.	(2548)		Hole full water in 20 min. 3510-3514. (2688)		
Total Depth		3514	(2692)				

Remarks 1508' CTM equals 1516' SLM; 3042' CTM equals 3042' SOM; 3459' CTM equals 3471' SLM.

Signed Harry J. Gaspeny