



Western Michigan University  
ScholarWorks at WMU

---

Legacy Scout Tickets from Pure Oil Company

---

8-20-2021

**MGRRE\_PureOilScoutTickets\_SAILOR,  
HARRY\_1\_21057128450000**

MGRRE  
*Western Michigan University*

Follow this and additional works at: <https://scholarworks.wmich.edu/pure>



Part of the Geology Commons

---

#### **WMU ScholarWorks Citation**

MGRRE, "MGRRE\_PureOilScoutTickets\_SAILOR, HARRY\_1\_21057128450000" (2021). *Legacy Scout Tickets from Pure Oil Company*. 2668.  
<https://scholarworks.wmich.edu/pure/2668>

This Document is brought to you for free and open access via ScholarWorks at WMU. It has been accepted for inclusion in Legacy Scout Tickets from Pure Oil Company by an authorized administrator of ScholarWorks at WMU. See the National Digital Catalogue - Science Base Catalogue for more collections submitted by MGRRE.



---

**MGRRE\_PureOilScoutTickets\_SAILOR, HARRY\_1\_21057128450000**

API 21057128450000

Permit Number 12845

Lease Name SAILOR, HARRY

Well Number 1

County Gratiot

Township 11N

Range 3W

Section 31

2021 DEQ or Pure co\_name DAILY CRUDE OIL CO THE

Pure Number 274

Latitude 43.29843

Longitude -84.72034

# THE PURE OIL COMPANY LOCATION REPORT

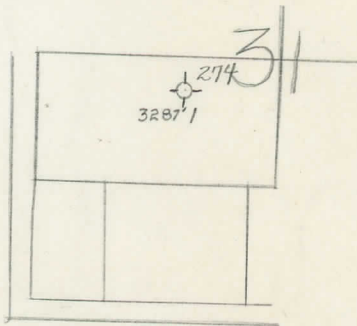
Date December 11, 1946 A.F.E. No. \_\_\_\_\_  
 Division Mich. Producing District \_\_\_\_\_ Lease Harry Sailor  
 Acres \_\_\_\_\_ Lease No. \_\_\_\_\_ Elevation \_\_\_\_\_ Well No. 1 (Serial No. 274)  
 Quadrangle NW NE SW Sec. 31 Twp. 11 N Rge. 3 W ~~ENX~~ ~~Dist.~~ Arcada  
 Survey \_\_\_\_\_ County Gratiot State Michigan  
 Operator Daily Crude Oil Co. Map Arcada Township, Gratiot County  
Daily Crude Oil Company

<u>330</u>	<u>330</u>	Feet from North Line of Lease
<u>990</u>	<u>990</u>	" " East " " "
_____	_____	" " South " " "
_____	_____	" " West " " "
<u>330</u>	<u>330</u>	Feet from North Line of Section
<u>990</u>	<u>990</u>	" " East " " "
_____	_____	" " South " " "
_____	_____	" " West " " "

**LEGEND**

- Location
- ☀ Gas Well
- Oil Well
- ☀ Gas - Distillate Well
- ∅ or ○ Dry Hole
- Dry Showing Oil
- ☀ Dry Showing Gas
- ⊗ Abandoned Location
- ☀ or ⊗ Abandoned Gas Well
- or ● Abandoned Oil Well
- or ○ Input Well

*map*



Scale \_\_\_\_\_

Remarks: \_\_\_\_\_  
 \_\_\_\_\_  
 \_\_\_\_\_

Submitted by CB Civil Engineer Approved by \_\_\_\_\_ Division Manager  
 Approved by \_\_\_\_\_ Vice-President - General Manager