



Western Michigan University  
ScholarWorks at WMU

---

Legacy Scout Tickets from Pure Oil Company

---

8-20-2021

**MGRRE\_PureOilScoutTickets\_HERGERT,  
CLAUDE\_1\_21059075170000**

MGRRE  
*Western Michigan University*

Follow this and additional works at: <https://scholarworks.wmich.edu/pure>



Part of the Geology Commons

---

#### **WMU ScholarWorks Citation**

MGRRE, "MGRRE\_PureOilScoutTickets\_HERGERT, CLAUDE\_1\_21059075170000" (2021). *Legacy Scout Tickets from Pure Oil Company*. 2718.  
<https://scholarworks.wmich.edu/pure/2718>

This Document is brought to you for free and open access via ScholarWorks at WMU. It has been accepted for inclusion in Legacy Scout Tickets from Pure Oil Company by an authorized administrator of ScholarWorks at WMU. See the National Digital Catalogue - Science Base Catalogue for more collections submitted by MGRRE.



---

**MGRRE\_PureOilScoutTickets\_HERGERT, CLAUDE\_1\_21059075170000**

API 21059075170000

Permit Number 7517

Lease Name HERGERT, CLAUDE

Well Number 1

County Hillsdale

Township 5S

Range 3W

Section 36

2021 DEQ or Pure co\_name ARCO CRUDE OIL CORP

Pure Number 10

Latitude 41.99034

Longitude -84.59405

THE PURE OIL COMPANY

LOCATION REPORT

No. 10

DATE April 10, 1940

COMPLETION RECORD OF WELLS DRILLED BY OTHER OPERATORS

STATE Michigan COUNTY Hillsdale DIST. Fayette TWP. Fayette SEC. 36 TOWN 5 S RANGE 3 W  
WELL No. 1 (SERIAL No. 10) FARM Claude Hergert ACRES

NAME OF STREAM OR WATERS QUADRANGLE SE NE SE

OPERATOR Arco Crude Oil Corporation Map Fayette Township, Hillsdale County

330 330 Feet from North Line of Farm

330 330 " " East " " "

" " South " " "

" " West " " "

907 1/2 907 1/2 Feet from North Line of Section

330 330 " " East " " "

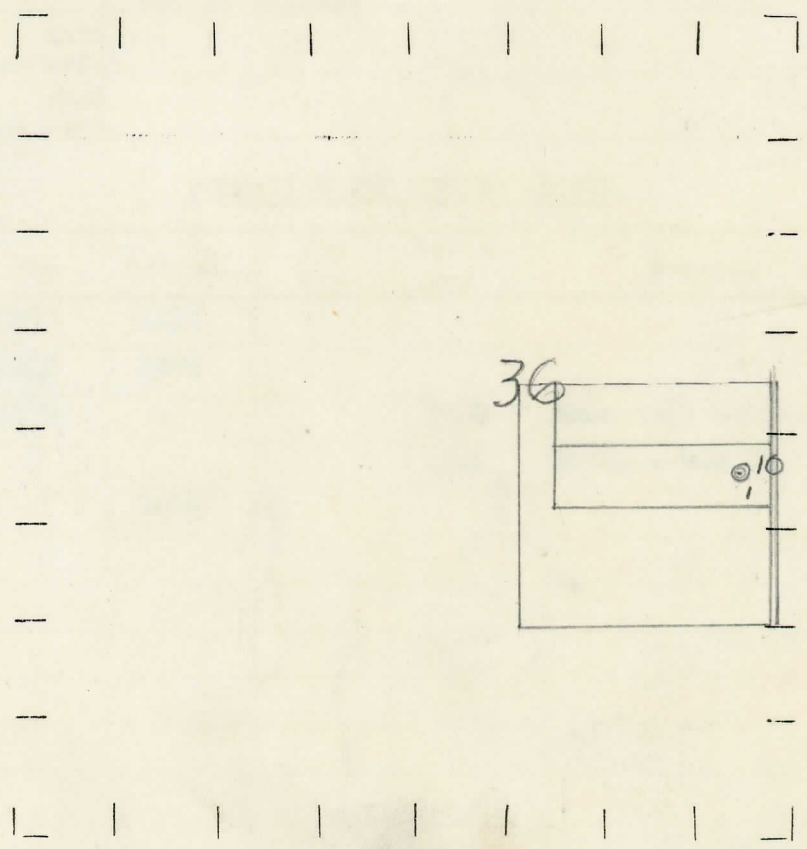
" " South " " "

" " West " " "

LEGEND

- LOCATION
- ⊙ RIG
- ⊕ DRILLING
- ☀ GAS WELL
- OIL WELL
- ◆ SMALL OIL WELL
- ⊖ DRY HOLE
- DRY SHOWING OIL
- ☀ DRY SHOWING GAS
- ⊖ ABANDONED LOCATION
- ☀ ABANDONED GAS WELL
- ABANDONED OIL WELL

NOTE: Below make tracing from map, (when no map is obtainable make sketch) showing farm, center of section, this location with measurements and also wells, dry holes, or other locations in the vicinity of this location.



REMARKS:

SIGNED

W

Superintendent or Foreman.

Date **March 5, 1941** No. **10**  
 State **Mich.** County **Hillsdale** Dist. **Fayette**  
 Twp. **5 S** Sec. **36** Rge. **3 W**  
 Well No. **1** (Serial No.) **10** Farm **Claude Hergert** Acres  
 Operator **Arco Crude Oil Corporation** Information secured ~~from~~ **Scouting Department**  
 Date well started **5-8-40** Date well completed **9-28-40** Elevation **1165.9**

PRODUCTION RECORD

1st 24 hours natural **Dry Hole**  
 2nd 24 hours natural  
 Date of shot No. of quarts From to From to  
 Date of acid No. of gallons  
 shot  
 1st 24 hours after acid  
 shot  
 2nd 24 hours after acid

FORMATION AND CASING RECORD

Formation	Top	Bottom	Top Pay	Bottom Pay	Remarks	Casing	
						Size	Set at
Sunbury	1090	1115				8-5/8"	289
Antrim	1145	1294					
Traverse Lime	1370			1400	Show salt water.		
				1414	Water - 900 ft.		
Total Depth		1414					

Remarks

Signed **D. C. Shackelford**