



Western Michigan University
ScholarWorks at WMU

Legacy Scout Tickets from Pure Oil Company

8-20-2021

MGRRE_PureOilScoutTickets_Haldane, Anna_1_21063042400000

MGRRE

Western Michigan University

Follow this and additional works at: <https://scholarworks.wmich.edu/pure>



Part of the Geology Commons

WMU ScholarWorks Citation

MGRRE, "MGRRE_PureOilScoutTickets_Haldane, Anna_1_21063042400000" (2021). *Legacy Scout Tickets from Pure Oil Company*. 2737.

<https://scholarworks.wmich.edu/pure/2737>

This Document is brought to you for free and open access via ScholarWorks at WMU. It has been accepted for inclusion in Legacy Scout Tickets from Pure Oil Company by an authorized administrator of ScholarWorks at WMU. See the National Digital Catalogue - Science Base Catalogue for more collections submitted by MGRRE.



MGRRE_PureOilScoutTickets_Haldane, Anna_1_21063042400000

API 21063042400000

Permit Number 4240

Lease Name Haldane, Anna

Well Number 1

County Huron

Township 16N

Range 12E

Section 30

2021 DEQ or Pure co_name Teater, C, W.

Pure Number 91

Latitude 43.77886

Longitude -83.10624

COMPLETION RECORD

The Pure Oil Company
THE PURE OIL COMPANY OTHER OPERATORS

DATE June 17, 1937

LOCATION REPORT

No. 91

STATE Michigan COUNTY Huron DIST. Colfax TWP. Colfax SEC. 30 TOWN 16 N RANGE 12 E
WELL No. 1 (SERIAL No. 91) FARM Anna Haldane ACRES

NAME OF STREAM OR WATERS QUADRANGLE SE-SW-SE, SE SW SE

OPERATOR Wade-Starny Company, P. F. Caldwell, Inc. Map Colfax Township, Huron County
Wade-Starny Co. C. W. Seater Colfax - Huron

Feet from North Line of Farm

330 330 " " East " " "

990 990 " " South " " "

990 990 " " West " " "

Feet from North Line of Section

330 330 " " East " " "

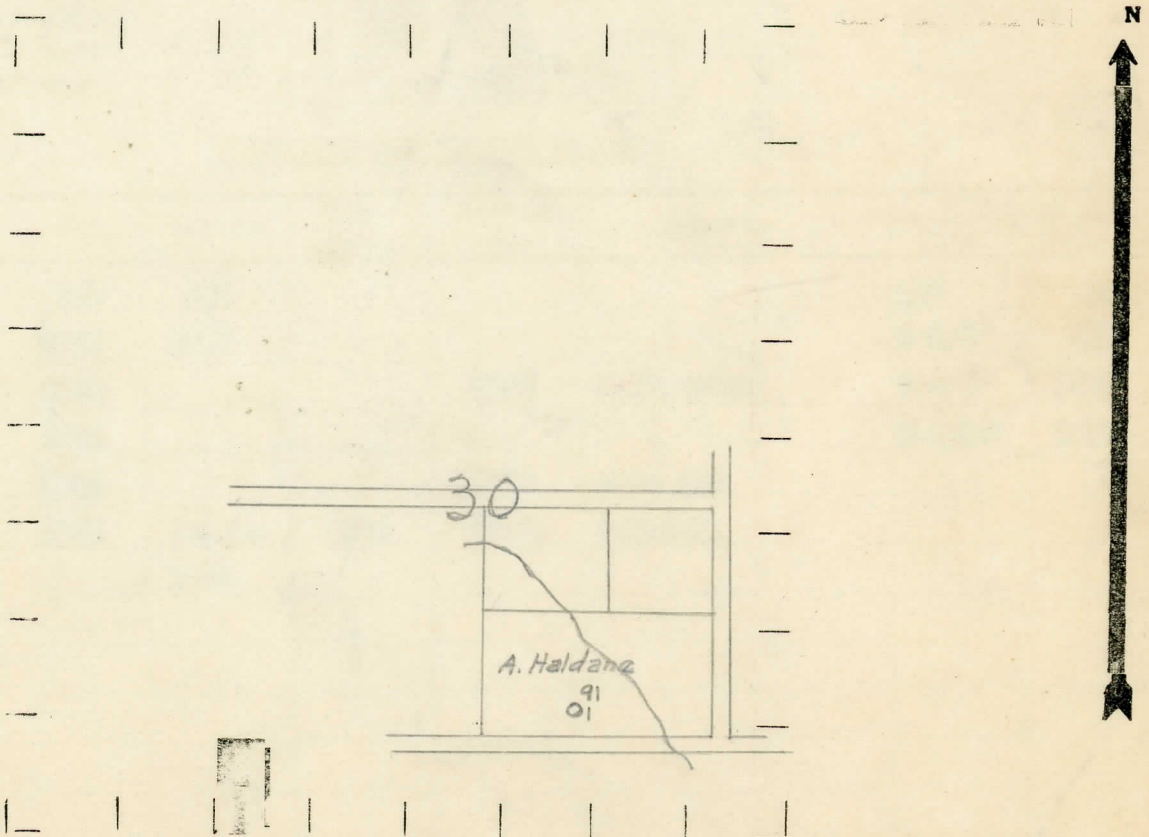
990 990 " " South " " "

990 990 " " West " 1/4 "

LEGEND

- LOCATION
- ⊕ RIG
- ⊕ DRILLING
- ☀ GAS WELL
- OIL WELL
- ⬮ SMALL OIL WELL
- ⊖ DRY HOLE
- ⊕ DRY SHOWING OIL
- ⊖ DRY SHOWING GAS
- ⊖ ABANDONED LOCATION
- ☀ ABANDONED GAS WELL
- ⬮ ABANDONED OIL WELL

NOTE: Below make tracing from map, (when no map is obtainable make sketch) showing farm, center of section, this location with measurements and also wells, dry holes, or other locations in the vicinity of this location.



REMARKS:

SIGNED R. d. Yeager
Superintendent or Foreman.

COMPLETION RECORD OF WELLS DRILLED BY OTHER OPERATORS

Michigan Producing Division

Date August 19, 1937 No. 91
 State Michigan County Huron Dist. Colfax Twp. 16 N Rge. 12 E
 Well No. 1 (Serial No.) (County No.) 91 Farm Anna Haldane Acres _____
 Operator C. W. Teater Information secured from Scouting Department
 Date well started 6-12-37 Date well completed 8-12-37 Elevation 729.0

PRODUCTION RECORD

1st 24 hours natural Dry Hole
 2nd 24 hours natural _____
 Date of shot _____ No. of quarts _____ From _____ to _____ From _____ to _____
 Date of acid _____ No. of gallons _____
 1st 24 hours after acid shot _____
 2nd 24 hours after acid shot _____

FORMATION AND CASING RECORD

Formation	Top	Bottom	Top Pay	Bottom Pay	Remarks	Casing	
						Size	Set in
Red Rock	240	250				10"	40
Sunbury	1443	1530				8-1/4"	811
Berea	1530			1595	Salt water	6-5/8"	1665
Antrim	1835					5-5/16"	2793
Traverse	2009			2280	Show gas		
Dundee	2785	S.L.M.	2991	2993	H.F.S.W.		
Total Depth		2993					

Remarks Hole full water at 220'-water from 935'-945'-1 1/2 bailers per hour.

Signed D. C. Shackelford