



Western Michigan University  
ScholarWorks at WMU

---

Legacy Scout Tickets from Pure Oil Company

---

8-20-2021

**MGRRE\_PureOilScoutTickets\_Ingram, Stella\_1\_21063081260000**

MGRRE

*Western Michigan University*

Follow this and additional works at: <https://scholarworks.wmich.edu/pure>



Part of the Geology Commons

---

#### **WMU ScholarWorks Citation**

MGRRE, "MGRRE\_PureOilScoutTickets\_Ingram, Stella\_1\_21063081260000" (2021). *Legacy Scout Tickets from Pure Oil Company*. 2749.

<https://scholarworks.wmich.edu/pure/2749>

This Document is brought to you for free and open access via ScholarWorks at WMU. It has been accepted for inclusion in Legacy Scout Tickets from Pure Oil Company by an authorized administrator of ScholarWorks at WMU. See the National Digital Catalogue - Science Base Catalogue for more collections submitted by MGRRE.



---

**MGRRE\_PureOilScoutTickets\_Ingram, Stella\_1\_21063081260000**

API 21063081260000

Permit Number 8126

Lease Name Ingram, Stella

Well Number 1

County Huron

Township 17N

Range 14E

Section 10

2021 DEQ or Pure co\_name Furnell, William W.

Pure Number 103

Latitude 43.92517

Longitude -82.81836

THE PURE OIL COMPANY

DATE October 23, 1940

LOCATION REPORT

No. 103

STATE Michigan

COUNTY Huron

Huron

DIST. Bloomfield

TWP. Bloomfield

SEC. 10

TOWN 17 N

RANGE 14 E

17 N

14 E

WELL No. 1 (SERIAL No. 103) FARM

PREC. Stella Ingram

Stella Ingram

ACRES

NAME OF STREAM OR WATERS

QUADRANGLE NW SE NW

OPERATOR William W. Furnell

Map Bloomfield Township, Huron County

330 330 Feet from North Line of Farm

" " East " " "

" " South " " "

330 330 " " West " " "

Feet from North Line of Section

990 990 " " East " 1/4 "

990 990 " " South " " "

" " West " " "

LEGEND

○ LOCATION

⊕ RIG

⊕ DRILLING

☼ GAS WELL

● OIL WELL

● SMALL OIL WELL

⊙ DRY HOLE

● DRY SHOWING OIL

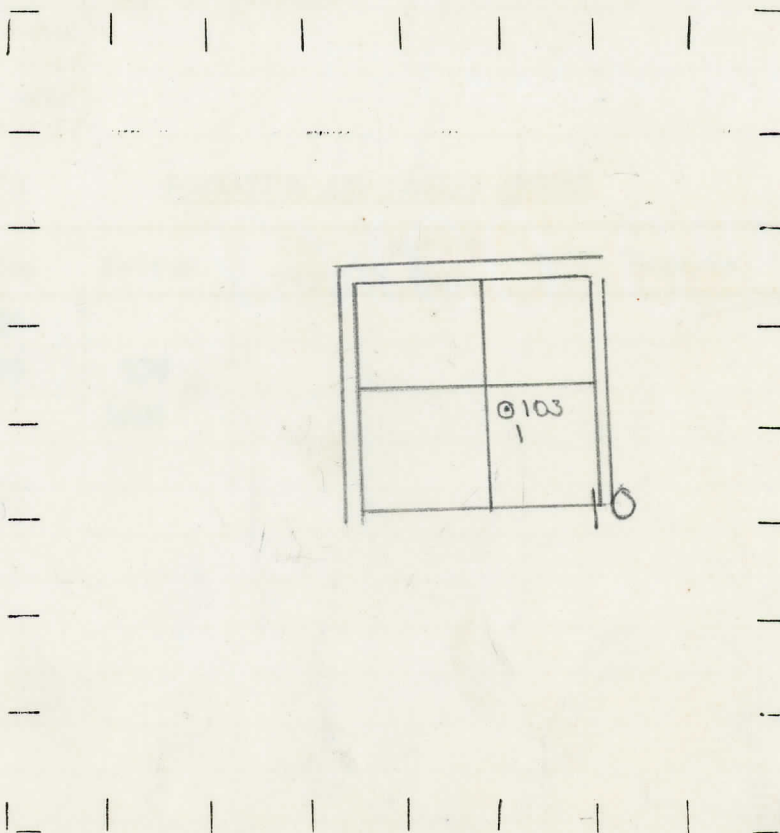
⊙ DRY SHOWING GAS

⊙ ABANDONED LOCATION

☼ ABANDONED GAS WELL

● ABANDONED OIL WELL

NOTE: Below make tracing from map. (when no map is obtainable make sketch) showing farm, center of section, this location with measurements and also wells, dry holes, or other locations in the vicinity of this location.



REMARKS:

SIGNED

W

Superintendent or Foreman.

