



Western Michigan University
ScholarWorks at WMU

Legacy Scout Tickets from Pure Oil Company

8-20-2021

MGRRE_PureOilScoutTickets_Citizens Bank_1_21063092240000

MGRRE

Western Michigan University

Follow this and additional works at: <https://scholarworks.wmich.edu/pure>



Part of the Geology Commons

WMU ScholarWorks Citation

MGRRE, "MGRRE_PureOilScoutTickets_Citizens Bank_1_21063092240000" (2021). *Legacy Scout Tickets from Pure Oil Company*. 2757.

<https://scholarworks.wmich.edu/pure/2757>

This Document is brought to you for free and open access via ScholarWorks at WMU. It has been accepted for inclusion in Legacy Scout Tickets from Pure Oil Company by an authorized administrator of ScholarWorks at WMU. See the National Digital Catalogue - Science Base Catalogue for more collections submitted by MGRRE.



MGRRE_PureOilScoutTickets_Citizens Bank_1_21063092240000

API 21063092240000

Permit Number 9224

Lease Name Citizens Bank

Well Number 1

County Huron

Township 15N

Range 14E

Section 14

2021 DEQ or Pure co_name Mercer Drilling Company

Pure Number 111

Latitude 43.73516

Longitude -82.78064

THE PURE OIL COMPANY LOCATION REPORT

Serial No. 111

Date November 26, 1941

A.F.E. No. _____

Division Mich. Producing District _____ Lease Citizens Bank

Acres _____ Lease No. _____ Elevation _____ Well No. 1

Quadrangle NE-NE-SE NE NE SE ^{Lot} Sec. 14 Twp. 15 N Rge. 14 E ^{XBld. XDist.} Twp. Paris

Survey _____ County Huron State Michigan

Operator Mercer Drilling Company Map Paris Township, Huron County

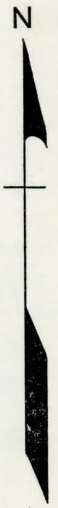
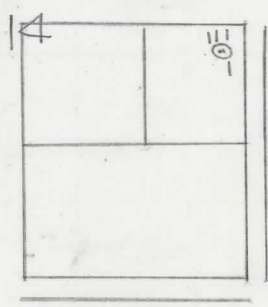
Feet North of South Line of Lease			
_____	East	West	" " "
<u>330</u>	<u>330</u>	" South	" North " " "
<u>330</u>	<u>330</u>	" West	" East " " "

Feet North of South Line of Section			
_____	East	West	" " "
<u>330</u>	<u>330</u>	" South	" North " " "
<u>330</u>	<u>330</u>	" West	" East " " "

machine

LEGEND

- Location
- ☀ Gas Well
- Oil Well
- ⊘ or ○ Dry Hole
- or ○ Dry Showing Oil
- ☀ Dry Showing Gas
- ⊘ Abandoned Location
- ⊘ or ☀ Abandoned Gas Well
- or ● Abandoned Oil Well



Scale _____

Remarks: _____

Submitted by W _____ Approved by _____
Civil Engineer _____ Division Manager _____

Approved by _____
Vice-President - General Manager _____

Michigan Producing Division

Date December 23, 1942 No. 111
 State Michigan County Huron District Twp. Paris Sec. 14 Twp. 15 N Rge. 14 E
 Well No. 1 (Serial No.) 111 (County No.) 111 Farm Citizens Bank Acres _____
 Operator Mercer Drilling Company Information secured ~~from~~ By Scouting Department
 Date well started 12-22-41 Date well completed 11-20-42 Elevation 777.2

PRODUCTION RECORD

1st 24 hours natural Dry Hole
 2nd 24 hours natural _____
 Date of shot _____ No. of quarts _____ From _____ to _____ From _____ to _____
 Date of acid _____ No. of gallons _____
 1st 24 hours after acid shot _____
 2nd 24 hours after acid shot _____

FORMATION AND CASING RECORD

Formation	Top	Bottom	Top Pay	Bottom Pay	Remarks	Casing	
						Size	Set at
Sunbury	789					10"	55
Berea	882				H.F.W. 882-890.	8-1/4"	269
Antrim	1175					6-5/8"	984
Traverse Lime	1434						
Dundee	2105				H.F.S.W. 2290		
Total Depth		2400	Est.				

Remarks _____

Signed D. C. Shackelford