



Western Michigan University
ScholarWorks at WMU

Legacy Scout Tickets from Pure Oil Company

8-20-2021

MGRRE_PureOilScoutTickets_Groll, Charles_1_21063108760000

MGRRE

Western Michigan University

Follow this and additional works at: <https://scholarworks.wmich.edu/pure>



Part of the Geology Commons

WMU ScholarWorks Citation

MGRRE, "MGRRE_PureOilScoutTickets_Groll, Charles_1_21063108760000" (2021). *Legacy Scout Tickets from Pure Oil Company*. 2764.

<https://scholarworks.wmich.edu/pure/2764>

This Document is brought to you for free and open access via ScholarWorks at WMU. It has been accepted for inclusion in Legacy Scout Tickets from Pure Oil Company by an authorized administrator of ScholarWorks at WMU. See the National Digital Catalogue - Science Base Catalogue for more collections submitted by MGRRE.



MGRRE_PureOilScoutTickets_Groll, Charles_1_21063108760000

API 21063108760000

Permit Number 10876

Lease Name Groll, Charles

Well Number 1

County Huron

Township 16N

Range 15E

Section 27

2021 DEQ or Pure co_name Markle, Wallace

Pure Number 118

Latitude 43.79725

Longitude -82.69603

THE PURE OIL COMPANY

LOCATION REPORT

Date June 28, 1944

A.F.E. No. _____

Division Mich. Producing District _____

Lease Charles Groll
Charles Groll

Acres _____ Lease No. _____ Elevation _____ Well No. 1 (Serial No. 118)

Quadrangle SW SE NW Sec. 27 Twp. 16 N Rge. 15 E Twp. Sand Beach

Survey _____ County Huron State Michigan

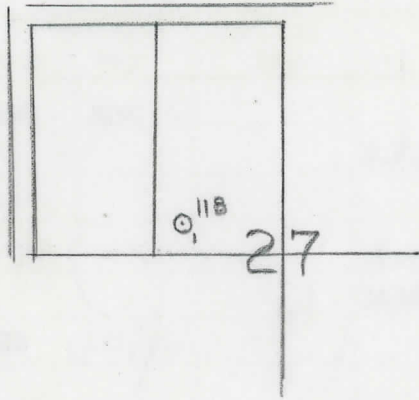
Operator Wallace Markle Map Sand Beach Township, Huron County

_____	_____	Feet from North Line of Lease
_____	_____	" " East " " "
<u>330</u>	<u>330</u>	" " South " " "
<u>330</u>	<u>330</u>	" " West " " "
_____	_____	Feet from North Line of Section
<u>990</u>	<u>990</u>	" " East " <u>1/4</u> "
<u>330</u>	<u>330</u>	" " South " " "
_____	_____	" " West " " "

LEGEND

- Location
- ☀ Gas Well
- Oil Well
- ☀ Gas - Distillate Well
- or ○ Dry Hole
- Dry Showing Oil
- ☀ Dry Showing Gas
- ⊗ Abandoned Location
- ☀ or ☀ Abandoned Gas Well
- or ● Abandoned Oil Well
- ⊗ or ⊗ Input Well

map



Remarks: _____

Scale _____

Submitted by EN Civil Engineer

Approved by _____ Division Manager

Approved by _____ Vice-President - General Manager

COMPLETION RECORD OF WELLS DRILLED BY OTHER OPERATORS

Michigan Producing Division

Date August 16, 1944 No. 118
 State Huron County Michigan District
 Twp. Sand Beach Sec. 27 Twp. 16 N Rge. 15 E
 Well No. 1 (Serial No.)
 Well No. 1 (County Index) 118 Farm Charles Groll Acres
 Operator Wallace Markle Information secured ~~from~~ By Scouting Department
 Date well started 7-20-44 Date well completed 8-12-44 Elevation 717.7

PRODUCTION BOARD

1st 24 hours natural Dry Hole
 2nd 24 hours natural
 Date of shot No. of quarts From to From to
 Date of acid No. of gallons
 1st 24 hours after acid shot
 2nd 24 hours after acid shot

FORMATION AND CASING RECORD

Formation	Top	Bottom	Top Pay	Bottom Pay	Remarks	Casing	
						Size	Set at
Sunbury	755 (-37)	885	SOM			10"	130
Berea	885	(-167)			H.F.S.W. 901. (-183)	8-1/4"	1010
Antrim	1160	(-442)					
Traverse Lime	1412	(-694)			Show salt water 1412. (-694)		
Total Depth		1500	(-782)				

Remarks 989' equals 1010' SOM.

Signed D. C. Shackelford