



Western Michigan University
ScholarWorks at WMU

Legacy Scout Tickets from Pure Oil Company

8-20-2021

MGRRE_PureOilScoutTickets_Inwood, Thomas_1_na

MGRRE

Western Michigan University

Follow this and additional works at: <https://scholarworks.wmich.edu/pure>



Part of the Geology Commons

WMU ScholarWorks Citation

MGRRE, "MGRRE_PureOilScoutTickets_Inwood, Thomas_1_na" (2021). *Legacy Scout Tickets from Pure Oil Company*. 2765.

<https://scholarworks.wmich.edu/pure/2765>

This Document is brought to you for free and open access via ScholarWorks at WMU. It has been accepted for inclusion in Legacy Scout Tickets from Pure Oil Company by an authorized administrator of ScholarWorks at WMU. See the National Digital Catalogue - Science Base Catalogue for more collections submitted by MGRRE.



MGRRE_PureOilScoutTickets_Inwood, Thomas_1_na

API na

Permit Number na

Lease Name Inwood, Thomas

Well Number 1

County Huron

Township 17N

Range 14E

Section 8

2021 DEQ or Pure co_name Markle, Wallace

Pure Number 119

Latitude 43.9214621

Longitude -82.8543199

THE PURE OIL COMPANY LOCATION REPORT

Date August 23, 1944 A.F.E. No. _____

Division Mich. Producing District _____ Lease Thomas Inwood

Acres _____ Lease No. _____ Elevation _____ Well No. 1 (Serial No. 119)

Quadrangle NE-NE-SW Sec. 8 Twp. 17 N Rge. 14 E ~~Dist.~~ Bloomfield

Survey _____ County Huron State Michigan

Operator Wallace Markle Map Bloomfield Twp - Huron Co.

330 330 Feet from North Line of Lease

330 330 " " East " " "

" " South " " "

" " West " " "

330 330 Feet from North Line of Section 1/4

330 330 " " East " " "

" " South " " "

" " West " " "

LEGEND

○ Location

☀ Gas Well

● Oil Well

☀ Gas - Distillate Well

○ or ○ Dry Hole

● Dry Showing Oil

☀ Dry Showing Gas

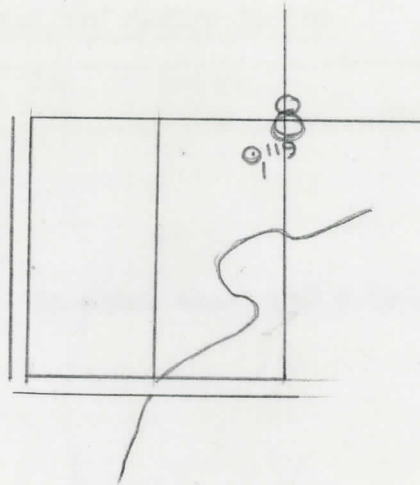
⊗ Abandoned Location

☀ or ⊗ Abandoned Gas Well

● or ● Abandoned Oil Well

⊗ or ⊗ Input Well

N



Scale _____

Remarks: _____

Submitted by RN Civil Engineer Approved by _____ Division Manager

Approved by _____ Vice-President - General Manager

