



Western Michigan University
ScholarWorks at WMU

Legacy Scout Tickets from Pure Oil Company

8-20-2021

MGRRE_PureOilScoutTickets_Cornish, Orville_1_21063110030000

MGRRE

Western Michigan University

Follow this and additional works at: <https://scholarworks.wmich.edu/pure>



Part of the Geology Commons

WMU ScholarWorks Citation

MGRRE, "MGRRE_PureOilScoutTickets_Cornish, Orville_1_21063110030000" (2021). *Legacy Scout Tickets from Pure Oil Company*. 2766.

<https://scholarworks.wmich.edu/pure/2766>

This Document is brought to you for free and open access via ScholarWorks at WMU. It has been accepted for inclusion in Legacy Scout Tickets from Pure Oil Company by an authorized administrator of ScholarWorks at WMU. See the National Digital Catalogue - Science Base Catalogue for more collections submitted by MGRRE.



MGRRE_PureOilScoutTickets_Cornish, Orville_1_21063110030000

API 21063110030000

Permit Number 11003

Lease Name Cornish, Orville

Well Number 1

County Huron

Township 17N

Range 14E

Section 7

2021 DEQ or Pure co_name Markle, Wallace

Pure Number 120

Latitude 43.92204

Longitude -82.86566

THE PURE OIL COMPANY
LOCATION REPORT

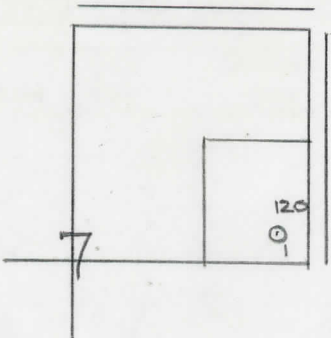
Date August 30, 1944 A.F.E. No. _____
 Division Mich. Producing District _____ Lease Orville Cornish
Orville Cornish
 Acres _____ Lease No. _____ Elevation _____ Well No. 1 (Serial No. 120)
 Quadrangle SE-SE-NE Sec. 7 Twp. 17 N Rge. 14 E ~~XBld.~~ Bloomfield
SE SE NE ~~XDist.~~ Bloomfield
 Survey _____ County Huron State Michigan
 Operator Wallace Markle Map Bloomfield Twp. - Huron
Wallace & Markle Bloomfield Township, Huron County

Feet from North Line of Lease					
<u>330</u>	<u>330</u>	"	"	East	" " "
<u>330</u>	<u>330</u>	"	"	South	" " "
		"	"	West	" " "
Feet from North Line of Section					
<u>330</u>	<u>330</u>	"	"	East	" <u>1/4</u> "
<u>330</u>	<u>330</u>	"	"	South	" " "
		"	"	West	" " "

LEGEND

- Location
- ☀ Gas Well
- Oil Well
- ☀ Gas - Distillate Well
- or ○ Dry Hole
- Dry Showing Oil
- ☀ Dry Showing Gas
- ⊗ Abandoned Location
- ☀ or ☀ Abandoned Gas Well
- or ● Abandoned Oil Well
- or ○ Input Well

Lo



Remarks: Per trans from Huron #119 ^{per}
Permit transferred from Huron #119. Scale _____

Submitted by EN Civil Engineer Approved by _____ Division Manager
 Approved by _____ Vice-President - General Manager

The Pure Oil Company
COMPLETION RECORD OF WELLS DRILLED BY OTHER OPERATORS

Michigan Producing Division

Date **September 20, 1944** No. **120**
State **Mich.** County **Huron** ~~INDEX~~ Twp. **Bloomfield** Sec. **7** Twp. **17 N** Rge. **14 E**
(Serial No.)
Well No. **1** (~~County No.~~) **120** Farm **Orville Cornish** Acres
Operator **Wallace Markle** Information secured ~~By~~ **Scouting Department**
Date well started **8-31-44** Date well completed **9-14-44** Elevation **706.9**

PRODUCTION BOARD

1st 24 hours natural **Dry Hole**
2nd 24 hours natural
Date of shot No. of quarts From to From to
Date of acid No. of gallons
1st 24 hours after acid shot
2nd 24 hours after acid shot

FORMATION AND CASING RECORD

Formation	Top	Bottom	Top Pay	Bottom Pay	Remarks	Casing	
						Size	Set at
Berea	890	(183)			H.F.S.W. 920. (213)	10"	60
Antrim	1237	(530)				8-1/4"	1004
Traverse Lime	1468	(761)			Show oil 1471. (764) Water 1471. (764)		
Total Depth		1471		(764)			

Remarks **One bailer water per hr. 230-235. At 1471' well filled up and flowed 25 bbls. fluid approx. 15 bbls. oil - then flowed only water.**

Signed **D. C. Shackelford**