



Western Michigan University  
ScholarWorks at WMU

---

Legacy Scout Tickets from Pure Oil Company

---

8-20-2021

## MGRRE\_PureOilScoutTickets\_Stone, Orla\_1\_unk

MGRRE

*Western Michigan University*

Follow this and additional works at: <https://scholarworks.wmich.edu/pure>



Part of the Geology Commons

---

### WMU ScholarWorks Citation

MGRRE, "MGRRE\_PureOilScoutTickets\_Stone, Orla\_1\_unk" (2021). *Legacy Scout Tickets from Pure Oil Company*. 2780.

<https://scholarworks.wmich.edu/pure/2780>

This Document is brought to you for free and open access via ScholarWorks at WMU. It has been accepted for inclusion in Legacy Scout Tickets from Pure Oil Company by an authorized administrator of ScholarWorks at WMU. See the National Digital Catalogue - Science Base Catalogue for more collections submitted by MGRRE.



---

MGRRE\_PureOilScoutTickets\_Stone, Orla\_1\_unk

API unk

Permit Number unk

Lease Name Stone, Orla

Well Number 1

County Ingham

Township 02N

Range 02E

Section 14

2021 DEQ or Pure co\_name Frank Chapman

Pure Number 5

Latitude 42.5618134

Longitude -84.172531

THE PURE OIL COMPANY

DATE February 5, 1934 COMPLETION & LOCATION REPORT

No. 5

STATE Michigan COUNTY Ingham DIST. White Oak SEC. 24 TOWN 2 N RANGE 2 E

WELL No. 1 (SERIAL No. 5) FARM Orla Stowe (Water Well) ACRES

NAME OF STREAM OR WATERS QUADRANGLE NE-NE-SE

OPERATOR Drilled by F. Chapman MAP White Oak Township, Ingham County

Feet from North Line of Farm

“ “ East “ “ “  
 “ “ South “ “ “  
 “ “ West “ “ “

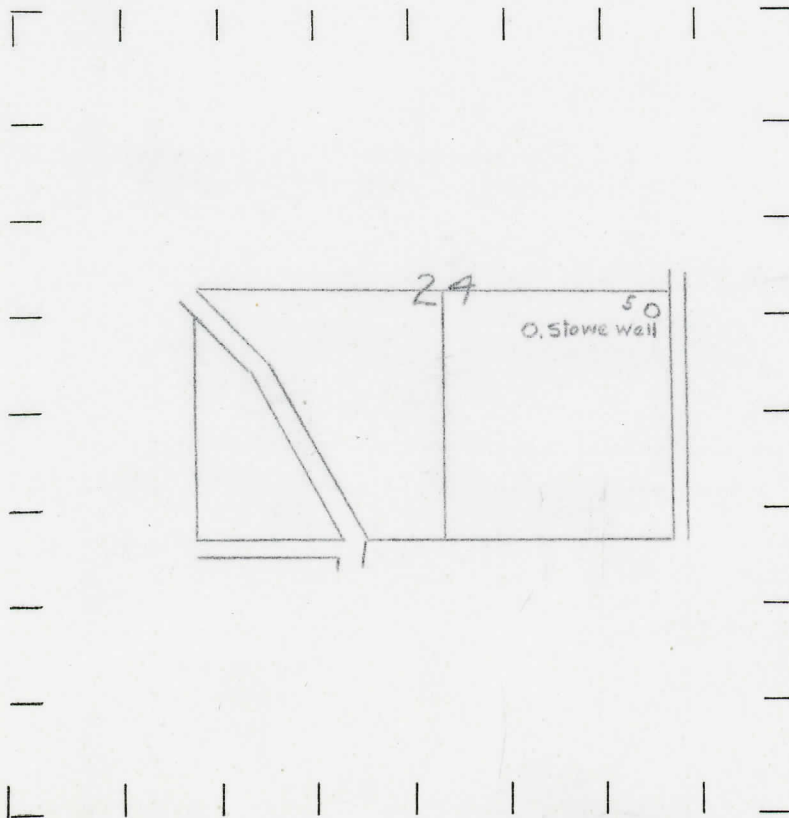
Feet from North Line of Section

300 “ “ East “ “ “  
2110 “ “ South “ “ “  
 “ “ West “ “ “

LEGEND

- LOCATION
- ⊕ RIG
- ⊕ DRILLING
- ⊗ GAS WELL
- OIL WELL
- ⊕ SMALL OIL WELL
- ⊗ DRY HOLE
- ⊕ DRY SHOWING OIL
- ⊗ DRY SHOWING GAS
- ⊗ ABANDONED LOCATION
- ⊗ ABANDONED GAS WELL
- ⊗ ABANDONED OIL WELL

NOTE: Below make tracing from map, (when no map is obtainable make sketch) showing farm, center of section, this location with measurements and also wells, dry holes, or other locations in the vicinity of this location. Make copy to keep for reference and send original to Columbus office.



Drift - 48  
 Marshall - 73

REMARKS: Of Geological Importance

SIGNED

Superintendent or Foreman.