



Western Michigan University  
ScholarWorks at WMU

---

Legacy Scout Tickets from Pure Oil Company

---

8-20-2021

**MGRRE\_PureOilScoutTickets\_Rogers, L\_1\_21065094770000**

MGRRE

*Western Michigan University*

Follow this and additional works at: <https://scholarworks.wmich.edu/pure>



Part of the Geology Commons

---

#### **WMU ScholarWorks Citation**

MGRRE, "MGRRE\_PureOilScoutTickets\_Rogers, L\_1\_21065094770000" (2021). *Legacy Scout Tickets from Pure Oil Company*. 2788.

<https://scholarworks.wmich.edu/pure/2788>

This Document is brought to you for free and open access via ScholarWorks at WMU. It has been accepted for inclusion in Legacy Scout Tickets from Pure Oil Company by an authorized administrator of ScholarWorks at WMU. See the National Digital Catalogue - Science Base Catalogue for more collections submitted by MGRRE.



---

**MGRRE\_PureOilScoutTickets\_Rogers, L\_1\_21065094770000**

API 21065094770000

Permit Number 9477

Lease Name Rogers, L

Well Number 1

County Ingham

Township 02N

Range 01E

Section 1

2021 DEQ or Pure co\_name Fisher McCall Oil and Gas, Incorporated

Pure Number 13

Latitude 42.58558

Longitude -84.27283

# THE PURE OIL COMPANY LOCATION REPORT

Serial No. 13

13

Date April 1, 1942

A.F.E. No. \_\_\_\_\_

Division Mich. Producing

Michigan Producing Division

Lease L. Rogers

Acres \_\_\_\_\_ Lease No. \_\_\_\_\_ Elevation \_\_\_\_\_ Well No. 1

Quadrangle SW SE SW Lot Sec. 1 Twp. 2 N Rge. 1 E Dist. Ingham

Survey \_\_\_\_\_ County Ingham State Michigan

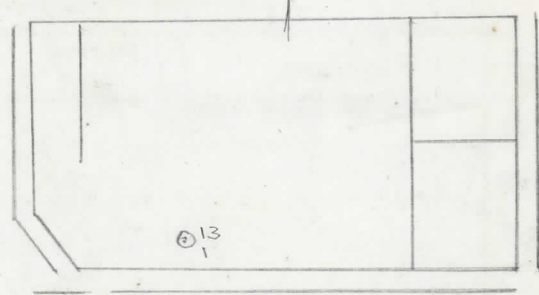
Operator Fisher-McCall Oil and Gas, Inc. Map Ingham Township, Ingham County

<u>330</u>	<u>330</u>	Feet North of South Line of Lease
<u>1650</u>	<u>1650</u>	" East " West " " "
		" South " North " " "
		" West " East " <u>1/4</u> "
<u>330</u>	<u>330</u>	Feet North of South Line of Section
		" East " West " " "
		" South " North " " "
<u>990</u>	<u>990</u>	" West " East " " "

*Handwritten notes:*  
3-28-42  
Jp

### LEGEND

- Location
- ☀ Gas Well
- Oil Well
- ⊘ or ○ Dry Hole
- Dry Showing Oil
- ☀ Dry Showing Gas
- ⊘ Abandoned Location
- ⊘ or ☀ Abandoned Gas Well
- or ● Abandoned Oil Well



Scale \_\_\_\_\_

Remarks: \_\_\_\_\_

Submitted by W \_\_\_\_\_  
Civil Engineer

Approved by \_\_\_\_\_  
Division Manager

Approved by \_\_\_\_\_  
Vice-President - General Manager

Date May 13, 1942 No. 13  
 State Mich. County Ingham Dist. Ingham Sec. 1 Twp. 2 N Rge. 1 E  
 Well No. 1 (Serial No.) 13 Farm L. Rogers Acres  
 Operator Fisher-McCall Oil & Gas, Inc. Information secured from Scouting Department  
 Date well started 3-28-42 Date well completed 5-5-42 Elevation 898.4

PRODUCTION RECORD

1st 24 hours natural Dry Hole  
 2nd 24 hours natural  
 Date of shot No. of quarts From to From to  
 Date of acid No. of gallons  
 shot  
 1st 24 hours after acid  
 shot  
 2nd 24 hours after acid

FORMATION AND CASING RECORD

Formation	Top	Bottom	Top Pay	Bottom Pay	Remarks	Casing	
						Size	Set at
Marshall	593			50	Hole full water.	10"	56
Red Rock	670	743				8-1/4"	792
" "	748	773				6-5/8"	1900
Coldw. Red Rock	1093	1105					
" " "	1783	1797					
Sunbury	1808	1817					
Berea	1846	1851					
"	1855	1860					
Antrim	1920						
Traverse Form.	2173	(Sample)			See remarks.		
Traverse Lime	2250	(Log)	2265	2273	1200 ft. salt water.		
Total Depth		2273					

Remarks Filled up with <sup>50 ft.</sup> oil from 2200' to 2202' and show gas overnight.

Signed D. C. Shackelford