



Western Michigan University
ScholarWorks at WMU

Legacy Scout Tickets from Pure Oil Company

8-20-2021

**MGRRE_PureOilScoutTickets_Kirkpatrick,
William_1_21065099870000**

MGRRE

Western Michigan University

Follow this and additional works at: <https://scholarworks.wmich.edu/pure>



Part of the Geology Commons

WMU ScholarWorks Citation

MGRRE, "MGRRE_PureOilScoutTickets_Kirkpatrick, William_1_21065099870000" (2021). *Legacy Scout Tickets from Pure Oil Company*. 2789.

<https://scholarworks.wmich.edu/pure/2789>

This Document is brought to you for free and open access via ScholarWorks at WMU. It has been accepted for inclusion in Legacy Scout Tickets from Pure Oil Company by an authorized administrator of ScholarWorks at WMU. See the National Digital Catalogue - Science Base Catalogue for more collections submitted by MGRRE.



MGRRE_PureOilScoutTickets_Kirkpatrick, William_1_21065099870000

API 21065099870000

Permit Number 9987

Lease Name Kirkpatrick, William

Well Number 1

County Ingham

Township 04N

Range 01W

Section 22

2021 DEQ or Pure co_name Voorhees Drilling Company

Pure Number 14

Latitude 42.71462

Longitude -84.42004

THE PURE OIL COMPANY LOCATION REPORT

Date Feb. 24, 1943

A.F.E. No. _____

Division Mich. Producing District _____

Lease Wm. Kirkpatrick
Wm. Kirkpatrick

Acres _____ Lease No. _____ Elevation _____ Well No. 1 (Serial No. 14)

Quadrangle C N 1/2 SW SW Sec. 22 Twp. 4 N Rge. 1 W Twp. Meridian

Survey _____ County Ingham State Michigan

Operator Voorhees Drilling Co. Map Meridian Twp - Ingham Co.
Meridian Township, Ingham County

330 330 Feet from North Line of Lease

“ “ East “ “ “

“ “ South “ “ “

660 660 “ “ West “ “ “

Feet from North Line of Section

“ “ East “ “ “

990 990 “ “ South “ 1/4 “

660 660 “ “ West “ “ “

LEGEND

○ Location

☀ Gas Well

● Oil Well

☀ Gas - Distillate Well

○ or ○ Dry Hole

● or ● Dry Showing Oil

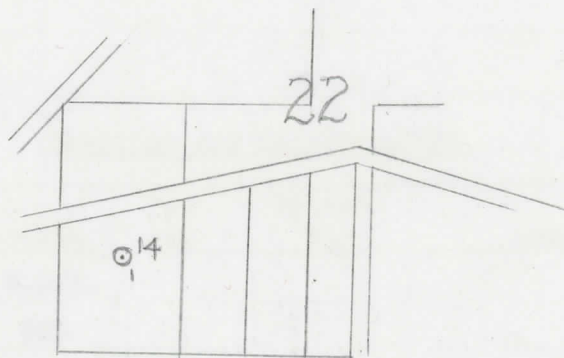
○ Dry Showing Gas

⊗ Abandoned Location

☀ or ☀ Abandoned Gas Well

● or ● Abandoned Oil Well

⊗ or ⊗ Input Well



N

Scale _____

Remarks: _____

Submitted by 2 _____
Civil Engineer

Approved by _____
Division Manager

Approved by _____
Vice-President - General Manager

COMPLETION RECORD OF WELLS DRILLED BY OTHER OPERATORS

Michigan Producing Division

Date April 28, 1943 No. 14
 State Mich. County Ingham Dist. Meridian Twp. 4 N Sec. 22 Rge. 1 W
 Well No. 1 (Serial No.) 14 Farm Wm. Kirkpatrick Acres _____
 Operator Voorhees Drilling Company Information secured ~~from~~ Scouting Department By _____
 Date well started 2-19-43 Date well completed 4-8-43 Elevation 854.7

PRODUCTION RECORD

1st 24 hours natural Dry Hole
 2nd 24 hours natural _____
 Date of shot _____ No. of quarts _____ From _____ to _____ From _____ to _____
 Date of acid _____ No. of gallons _____
 1st 24 hours after acid shot _____
 2nd 24 hours after acid shot _____

FORMATION AND CASING RECORD

Formation	Top	Bottom	Top Pay	Bottom Pay	Remarks	Casing	
						Size	Set at
Marshall	670	S.O.M.				10"	56
Red Rock	817	925				8-1/4"	956
Coldw. Red Rock	1328	1351			Show salt water ^{1340.}	6-5/8"	2547
Sunbury	1976	2002					
Berea	2002	2087					
Antrim	2087	2344					
Traverse Lime	2370	2379			Smell oil 2375-78.		
Dundee	2650				2100 ft. salt water at 2438.		
Monroe	2730						
Total Depth		2833					

Remarks 2823' CTM equals 2821' SLM.

Signed D. C. Shackelford